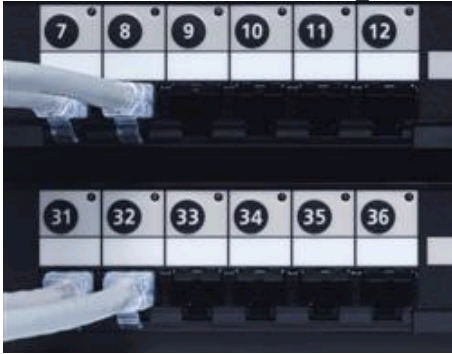


## SYSTIMAX® GigaSPEED® XL 1100GS3 Patch Panel



Certified component of an integrated GigaSPEED XL Solution

The SYSTIMAX® GigaSPEED® XL 1100GS3 Modular Patch Panel is a 19-inch rack or wall mountable 8-pin modular jack panel that accommodates repeated line moves, additions and rearrangements. Installation is easy using proven 110 IDC gas tight terminations on the back with easy to read labeling guides. Designed by CommScope Labs as part of the fully tuned and integrated GigaSPEED XL cabling solution, the 1100GS3 panel provides an industry standard panel footprint but with many performance and feature extras.

The GigaSPEED XL 1100GS3 panel is angled to allow the cable to flow to each side of the rack. This enables the patch cords to be routed directly into vertical cable managers. It also allows the labeling scheme and port identification to be visible at all times.

The 1100GS3 Distribution Modules feature an innovative termination manager and redesigned rear housing. The termination manager and rear housing provide for easier, faster, more reliable terminations and reduced variability in the placement and termination of cables to the panel.

- Electrical Performance guaranteed to meet or exceed TIA/EIA 568B.2-1 Category 6 and ISO/IEC Category 6/Class E specifications
- Available in 24- and 48-port configurations (angled and straight) featuring universal A/B labeling
- 110 connector terminations on rear of panel allow quick and easy installation of 22 to 24 AWG cable
- Attractive black powder covered high-strength steel panel comes equipped with a removable rear mounted cable management bar
- Each panel comes ready to install, including front and rear labels
- Backward compatible with Category 5e, 5, and 3 cords and cables, however optimal performance is achieved when used with GigaSPEED GS8E patch cords
- Can support network line speeds in excess of 1 Gb/s
- Qualifies for the SYSTIMAX 20-Year Extended Warranty and Applications Assurance when included as part of a registered SYSTIMAX GigaSPEED X10D F/UTP channel



# Product Specifications



1100GS3-48 w/Termination Mgt

Material ID: 760062380



GigaSPEED® XL 1100GS3 Category 6 U/UTP Modular Patch Panel, 48 port with termination manager

## CHARACTERISTICS

### Dimensions

Depth	40.64 mm   1.60 in
Diameter Over Dielectric, maximum	1.168 mm   0.046 in
Diameter Over Dielectric, minimum	0.762 mm   0.030 in
Height	88.90 mm   3.50 in
Width	482.60 mm   19.00 in

### Electrical Specifications

ANSI/TIA Category	6
Current Rating	1.5 A @ 20 °C 1.5 A @ 68 °F
Dielectric Withstand Voltage, RMS, conductive surface	1500 Vac @ 60 Hz
Dielectric Withstand Voltage, RMS, contact-to-contact	1000 Vac @ 60 Hz
Insulation Resistance, minimum	500 MOhm

### Environmental Specifications

Flammability Rating	UL 94 V-0
Operating Temperature	-10 °C to +60 °C (+14 °F to +140 °F)
Relative Humidity	Up to 95%, non-condensing
Safety Standard	UL/cUL listed
Storage Temperature	-40 °C to +70 °C (-40 °F to +158 °F)

### General Specifications

Cable Type	U/UTP (unshielded)
Modules, quantity	8
Product Type	Panel
Total Ports, quantity	48
Color	Black
Package, quantity	1
Rack Type	EIA 19 in
Rack Units	2

### Mechanical Specifications

Conductor Gauge, solid	22 AWG   24 AWG   26 AWG
------------------------	--------------------------

# Product Specifications



1100GS3-48 w/Termination Mgt

Conductor Gauge, stranded	22 AWG   24 AWG
Conductor Type	Solid   Stranded (7 strands)
Material Type	High-impact, flame retardant, thermoplastic   Powder-coated steel
Outlet/Module Contact Plating	Gold over nickel
Plug Insertion Life Test Plug	IEC 60603-7 compliant plug
Plug Insertion Life, minimum	750 times
Plug Retention Force, minimum	30 lbf   133 N
Rear Termination Contact Plating	Gold over nickel
Rear Termination Type	IDC
Wiring	T568A   T568B

## Regulatory Compliance/Certifications

### Agency

RoHS 2002/95/EC  
ISO 9001:2000

### Classification

Compliant  
Compliant



**SYSTIMAX<sup>®</sup>**  
**SOLUTIONS**  
www.commscope.com

©2009 CommScope, Inc. All rights reserved.  
All trademarks identified by ® or ™ are registered trademarks or trademarks, respectively, of CommScope.  
All specifications are subject to change. See www.commscope.com for the most current information.