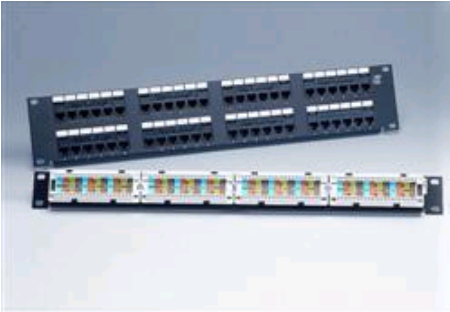


SYSTIMAX® 1100PSCAT5E Panel



Straight and Angled Panels

The 1100PSCAT5E Modular Jack Panel is a 19-inch rack mountable RJ45 jack panel available in straight or angled designs. The 1100PSCAT5E accommodates repeated line moves, additions and rearrangements. The IDC connection on the rear of the panel houses the printed wiring board that provides continuous connection to the 8-pin modular jacks on the front. The result is a hard-working panel that allows an IDC gas-tight termination of equipment on 110 connectors.

The panel is available with 24 or 48 RJ45 ports. The 1100PSCAT5E Panel kit includes new icon labels with plastic holders that you can mount on the front of the panel for easy port identification.

- PowerSUM channel performance specifications exceed not only the TIA 568B.2 and ISO 11801 Edition 2 for Category 5e/Class D cabling systems, but are also capable of providing stable and continual performance up to and beyond 100 MHz
- 110 connector terminations on rear of panel allow quick and easy installation of 22 to 24 AWG cable
- Cables routed and tied directly to the panel eliminating the rear cable management bar
- Supports 1 Gb network line speeds
- Category 5 and 3 backward compatible
- PowerSUM 20 year warranty
- Vertical and Horizontal cable organizers improve patch cord management (order separately, 1100C and 1100D)
- Supports IEEE 802.3 1000BASE-T plus other legacy LANs and applications

Product Specifications



1100PS CAT5E-24B

Material ID: 108208919

PowerSUM 1100 Category 5e U/UTP Modular Jack Panel, 24 port



CHARACTERISTICS

Dimensions

Diameter Over Dielectric, maximum	1.168 mm 0.046 in
Diameter Over Dielectric, minimum	0.762 mm 0.030 in

Electrical Specifications

ANSI/TIA Category	5e
Current Rating	1.5 A @ 20 °C 1.5 A @ 68 °F
Dielectric Withstand Voltage, RMS, conductive surface	1500 Vac @ 60 Hz
Dielectric Withstand Voltage, RMS, contact-to-contact	1000 Vac @ 60 Hz
Insulation Resistance, minimum	500 MOhm

Environmental Specifications

Flammability Rating	UL 94 V-0
Operating Temperature	-10 °C to +60 °C (+14 °F to +140 °F)
Relative Humidity	Up to 95%, non-condensing
Safety Standard	UL/cUL listed
Storage Temperature	-40 °C to +70 °C (-40 °F to +158 °F)

General Specifications

Cable Type	U/UTP (unshielded)
Modules, quantity	4
Product Type	Panel
Total Ports, quantity	24
Color	Black
Package, quantity	1
Rack Type	EIA 19 in
Rack Units	1

Mechanical Specifications

Conductor Gauge, solid	22 AWG 24 AWG 26 AWG
Conductor Gauge, stranded	22 AWG 24 AWG 26 AWG
Conductor Type	Solid Stranded (7 strands)
Material Type	High-impact, flame retardant, thermoplastic Powder-coated steel

Product Specifications



1100PS CAT5E-24B

Outlet/Module Contact Plating	Gold over nickel
Plug Insertion Life Test Plug	IEC 60603-7 compliant plug
Plug Insertion Life, minimum	750 times
Plug Retention Force, minimum	30 lbf 133 N
Rear Termination Contact Plating	Gold over nickel
Rear Termination Type	IDC
Wiring	T568A T568B

Regulatory Compliance/Certifications

Agency

RoHS 2002/95/EC
ISO 9001:2000

Classification

Compliant
Compliant



SYSTIMAX®
SOLUTIONS
www.commscope.com

©2009 CommScope, Inc. All rights reserved.
All trademarks identified by ® or ™ are registered trademarks or trademarks, respectively, of CommScope.
All specifications are subject to change. See www.commscope.com for the most current information.

Page 3 of 3
6/8/2009