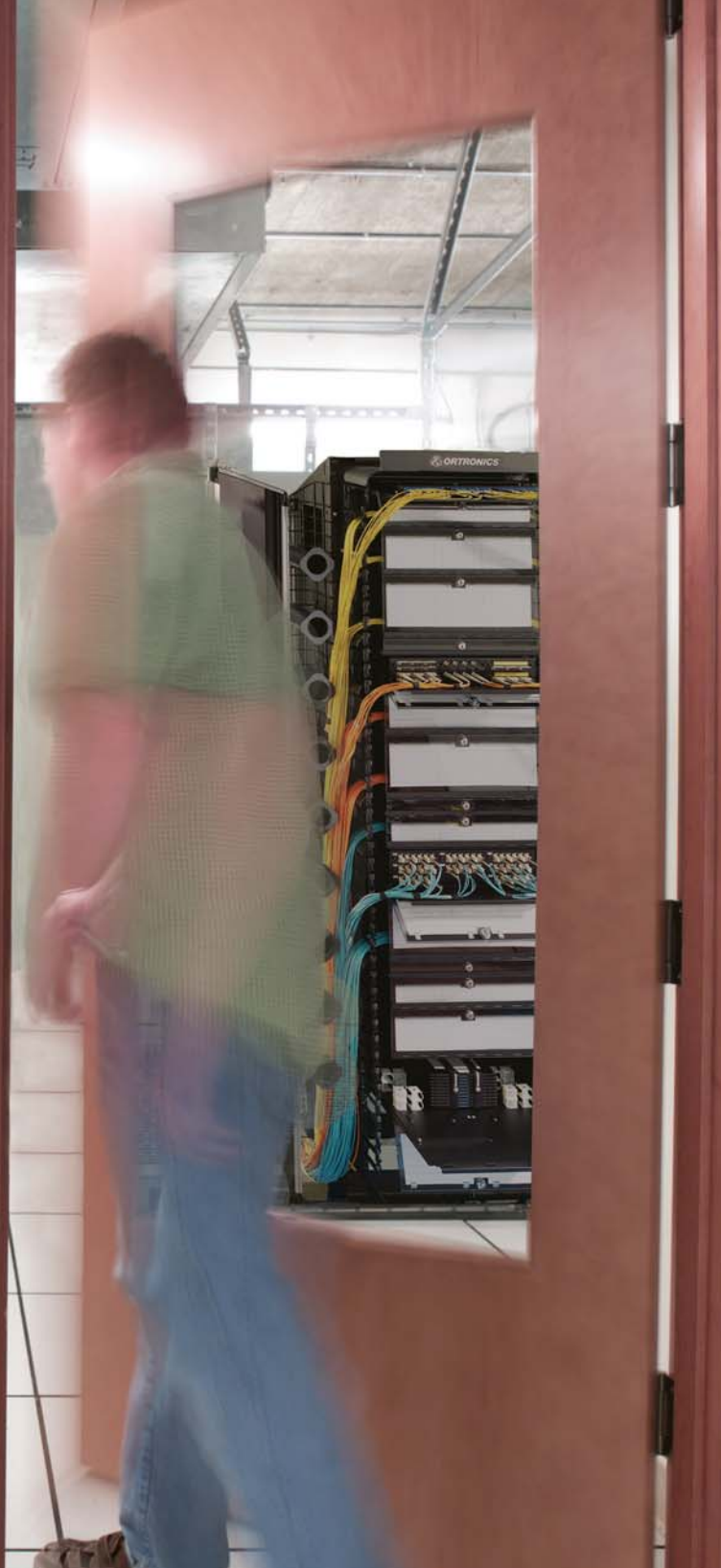


OptiMo[®]

high performance
fiber optic solutions



LANS, SANS, DATA CENTERS



■ EXPERTISE. TECHNOLOGY. SOLUTIONS.



Fiber Structured Right!

Put fiber to work in your network with the one management system that does it all.

If you're ready for a fiber optic structured cabling system for your LAN, SAN, or data center, Ortronics/Legrand is ready with innovative solutions for faster installation, higher performance, and easier administration. Our products are engineered with attention to detail for:

- Neater and more flexible cable routing
- Simpler moves, adds, and changes
- Space-saving, high-density installations
- Flexibility for growth
- Long-term reliability

10G Ready to Go the Distance

OptiMo® fiber optic systems give you the full benefits of fiber's higher bandwidth and longer transmission distances.

- Laser-optimized 50/125- μ m multimode fiber (LOMF) to achieve the full data rates



specified for high speed Fibre Channel and 10G Ethernet

- Single mode solutions with the bandwidth and distances for interfloor and interbuilding campus applications
- Standard 62.5/125- μ m and 50/125- μ m multimode fiber for legacy applications

Finally, Copper and Fiber Gracefully in One Rack

Forget about needing separate racks for fiber and copper—or messy installations to force-fit the two media into one rack. The Mighty Mo® 6 rack is already the industry favorite for copper. And now our line of fiber cabinets and related hardware works perfectly with

Mighty Mo 6 racks. So you need only one rack system for all your cabling installations.

Solutions to Fit Your Style

Whether you are planning a data center/SAN or an Ethernet LAN, we can show you more ways to achieve your goal. We summarize here common product options:

Momentum®: Snap-in Momentum pre-terminated cassettes and cable assemblies provide the easy “plug-in and go” approach to structured cabling.

Field-installable systems: Choose the system option best for your installation. Ortronics offers two styles of field installable connectors. Our pre-polished no-epoxy/no-polish style connectors install fast with consistent results. Our Anaerobic field polished or pre-polished connectors deliver the cost savings and reliability you demand for a high performance system.

Supporting Components:

Ortronics/Legrand has the connecting hardware to make any installation clean and easy from the rack to the workstation outlet.

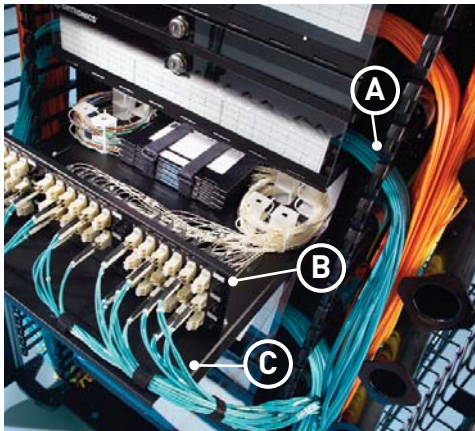
Peace of Mind

With one of the best warranties in the industry, we guarantee your OptiMo® system will meet or exceed all industry-standard application requirements, including TIA/EIA-568-B cabling systems, IEEE 802.3 Ethernet, and Fibre Channel.

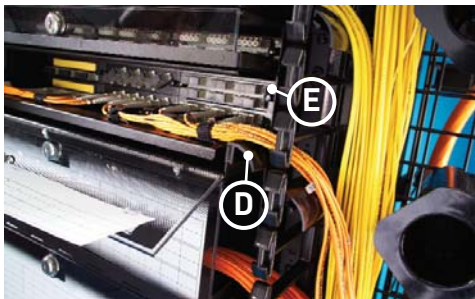
Engineered for Better Performance

3

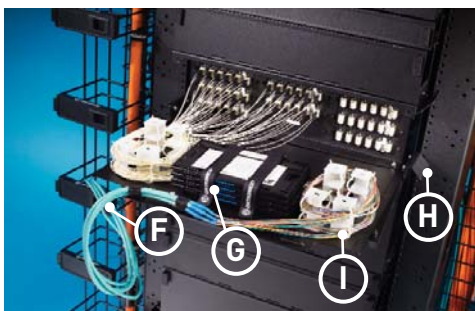
www.ortronics.com



- (A) Large patch cord exit ports at the front of a cabinet provide maximum clearance for management of fiber patch cords in high-density installations
- (B) Easy front access: fiber tray slides forward for termination of optical fibers, internal fiber routing, and patch cord management
- (C) Front cable management for organizing patch cords and to prevent cable pinching

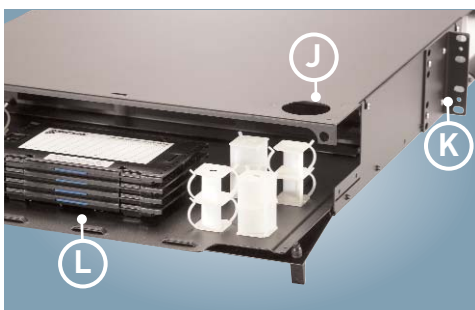


- (D) Bend radius clips help maintain minimum bend radius
- (E) Adapter panel face aligns with vertical cable management to optimize patch cord management for best possible patch cord exit



- (F) Hook/loop lances built-in to the fiber tray are positioned for optimal internal fiber management
- (G) Specially positioned hook/loop lances secure splice tray firmly to the rear sliding tray
- (H) Cable brackets include lances for hook/loop fasteners
- (I) Patented* snap-in fiber management clips ensure fiber bend radius compliance and snap into receptacles for a secure installation and optimum fiber protection

*Patent No. 6,278,830



- (J) Easy rear access: fiber tray slides rearward for additional access, improved backbone cable management, internal fiber routing and rear cabinet internal routing holes added
- (K) Adjustable mounting brackets
- (L) Optional tray locking accessory kit to prevent movement

Everything to Make Fiber Shine

Get the fiber management products to complete any installation with cabinets, patch panels, splice trays, and workstation outlets.

Ortronics New OptiMo® FC Series Rack-Mount Fiber Cabinets for Patch and Splicing Applications
19"-deep cabinet chassis provides more room for internal fiber management and is optimized for use with Mighty Mo 6 10.5"-deep rack system.

- Available in 1, 2, 3, 4 rack unit heights
- Front viewable label card
- Easily removable drop-down card is hinged to the front Plexiglas door of cabinet
- Rear cabinet internal routing holes added



APPLICATION	HEIGHT	ADAPTER PANELS CAPACITY	SPLICE TRAY CAPACITY	PART NO.
Patching	1U	3	—	OR-FC01U-P
	2U	6	—	OR-FC02U-P
	3U	9	—	OR-FC03U-P
	4U	12	—	OR-FC04U-P
Splicing/ Patching	1U	3	2	OR-FC01U-C
	2U	6	6	OR-FC02U-C
	3U	9	11	OR-FC03U-C
	4U	12	16	OR-FC04U-C
Splicing	1U	—	4	OR-FC01U-S
	2U	—	12	OR-FC02U-S
	3U	—	22	OR-FC03U-S
	4U	—	32	OR-FC04U-S

1U

FRONT VIEW

REAR VIEW

OR-FC01U-C

2U

FRONT VIEW

REAR VIEW

OR-FC02U-C

3U

FRONT VIEW

REAR VIEW

OR-FC03U-C

4U

FRONT VIEW

REAR VIEW

OR-FC04U-C

Accessories

5

Cable Fastening Bracket

Provides robust backbone cable retention when installing from above or below cabinet.



Accommodates a range of cable diameters using flexible and strong hook/loop straps.

CABINET	POSITION	PART NO.
1U	Top	OR-FCBR-001
2, 3, 4U	Top	OR-FCBR-002
	Bottom	OR-FCBR-003

Bend-Limiting Clips

For internal fiber management, package of 8 clips.

PART NO.	OR-70800158
----------	-------------

D-Ring Cable Management Straps

Hook/loop style, package of 12.

PART NO.	OR-70700107-00	Black, .75" W x 12" L
----------	----------------	-----------------------



New Splice tray

Slimline, stackable design to allow higher splice density. Handles 12 splices.

PART NO.	OR-FST-F012	7.12" L x 4.25" W x .35" H
----------	-------------	----------------------------

New Adapter Panels with New Plastic Bezel Design

Multimode receptacles are beige with a phosphor bronze sleeve. Single-mode receptacles are blue with a ceramic sleeve.

FIBER	INTERFACE	ADAPTER COUNT	FIBER CAPACITY	PART NO.
Multimode	LC duplex	6	12	OR-0FP-LCD12MB
	LC quad	6	24	OR-0FP-LCQ24MB
	SC duplex	3	6	OR-0FP-SCD06MB
	SC duplex	4	8	OR-0FP-SCD08MB
	SC duplex	6	12	OR-0FP-SCD12MB
Single-mode	LC duplex	6	12	OR-0FP-LCD12AC
	LC quad	6	24	OR-0FP-LCQ24AC
	SC duplex	3	6	OR-0FP-SCD06AC
	SC duplex	4	8	OR-0FP-SCD08AC
	SC duplex	6	12	OR-0FP-SCD12AC
Blank panel	—	—	—	OR-0FP-BLANK



OR-0FP-LCD12AC



OR-0FP-LCDQ24MB



OR-0FP-SCD12MB



OR-0FP-SCD08AC

New OptiMo Raised Floor Fiber Patch Panels for Data Centers and Zone Cabling

Angled fiber patch panel for use in raised floor box, with mounting rails angled either at 45 degrees or between 56 to 60 degrees. Designed for installation within 2' x 2' underfloor box with fixed angled mounting rails, creating a horizontal patch panel orientation. The panels allow data center managers to take advantage of underused space beneath the raised floor.

Height	Capacity		Part No.	
	Adapter	Cassette	45 Degree	56-60 Degree
1U	3	3x1U	OR-RFPA01U	OR-RFPA01U-A
2U	6	6x1U/3x2U	OR-RFPA02U	OR-RFPA02U-A
Stand-off Bracket Kit			OR-60400968	



(shown in third-party floor box)



OR-RFPA01U



OR-RFPA02U

Momentum® 2 Cassette-Based Products

Momentum® 2 fiber systems make your plug-in installation fast, easy, and error-proof.

Ideal for data centers and SANs, Momentum is a modular, pre-terminated cabling system integrating high-performance optical cassettes with advanced ribbon cable in the backbone. It's simple to use, and fast to install, because the connectors are factory terminated and tested. Cassettes are supported by a range of rack-mount and underfloor panels for convenient installation.

Momentum 2 Cassettes

Rapid method of structured cabling deployment: plug it in and you're ready to go. Factory-terminated/tested cassettes guarantee field performance.

- High-density 12, 24, 48 and 72-fiber ribbon cable, terminated with MTP* connectors
- Reduced cable cross section minimizes congestion in fiber pathways
- Small cable outer dimensions facilitate air flow in high density installations
- Factory-terminated/tested cassettes and backbone cables guarantee performance in the field
- Full support of today's most rigorous transmission technologies up through 10 Gb/s

*MTP is a registered trademark of US Conec.



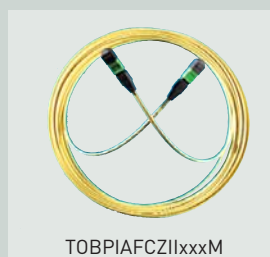
M2LCQ24-50E



M2LCD12-09



M2LCD12-50E



TOBPIAFCZIIxxxM



TOBPLAFFZAAxxxM

Additional Products for Use with Momentum Cassette-Based Products

- OptiMo® FC Series Rack-Mount Cabinets (page 4)
- OptiMo Raised Floor Fiber Patch Panels (page 5)
- Fiber Management Accessories (page 5)
- Mighty Mo® 6 Cable Management System (page 10)

For up-to-date performance specifications, visit www.ortronics.com/fiber-performance

Cassettes

RACK UNITS	GLASS GRADE	FIBER TYPE	FIBERS	ADAPTER	PART NO.
1U	4900/500 MHz-km @850 nm	50/125 LOMF	24	LC Quad	OR-M2LCQ24-50E
			12	LC Duplex	OR-M2LCD12-50E
			12	SC Duplex	OR-M2SCD12-50E
1U		Single-Mode	24	LC Quad	OR-M2LCQ24-09
			12	LC Duplex	OR-M2LCD12-09
			12	SC Duplex	OR-M2SCD12-09

MTP* to MTP* Ribbon Backbones

RATING	COLOR	FIBER TYPE	DESCRIPTION	BANDWIDTH MHz-km @ 850/1300 nm	FIBER COUNT	PART NO.
Plenum	Aqua	50/125	50 LOMF, OM3	2000/500	12	OR-TOBPLAFFZAAxxxM
					24	OR-TOBPLAIFJAAxxxM
					48	OR-TOBPLAKFJAAxxxM
					72	OR-TOBPLAMFJAAxxxM
Plenum	Yellow	SM	Single-mode		12	OR-TOBPIAFCZIIxxxM
					24	OR-TOBPIAICJIIxxxM
					48	OR-TOBPIAKCJIIxxxM
					72	OR-TOBPIAMCJIIxxxM

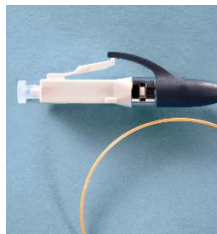
Replace xxx with length (xxxM for ordering in meters, xxxF for ordering in feet).

Backbones also available with 62.5/125 multimode optical fiber. Contact Ortronics/Legrand sales at 800-934-5432 for assistance.

Field-Installable Systems

7

Get maximum installation flexibility with products for conventional methods including field termination, splicing, and patch/splice installations.



OR-205KAS9GA-50T



OR-854A00000-1

Pre-Polished Field-Installable Connectors

Style	Fiber	Part No.	
		Single Pack	25 pack
LC	50/125 MM	OR-205KAS9GA-50T	OR-205KAS9GB-50T
	62.5/125 MM	OR-205KAS9GA-62	OR-205KAS9GB-62
	Single Mode	OR-205KAS9GA-09	OR-205KAS9GB-09
SC	50/125 MM	OR-205KAS9FA-50T	OR-205KAS9FB-50T
	62.5/125 MM	OR-205KAS9FA-62	OR-205KAS9FB-62
	Single Mode	OR-205KAS9FA-09	OR-205KAS9FB-09

For ST connectors, contact Ortronics/Legrand Sales.

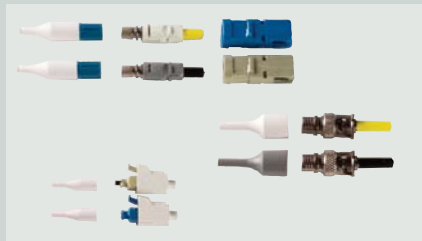
Pre-Polished Field-Installable Accessories

Description	Fibers	Part No.
SC conversion kit: 2.4 - 3.0 mm jacket	—	OR-20500236
LC conversion kit: 2.0 mm jacket	—	OR-20500267
Breakout kit for loose tube termination	6	OR-61500868
	12	OR-61500858
Pre-Polished Termination Kit (LC, SC, and ST)		OR-854A00000-1

Additional Products for Use with Field-Installable Systems

- OptiMo® FC Series Rack-Mount Cabinets (page 4)
- Adapter Panels (page 5)
- OptiMo Raised Floor Fiber Patch Panels (page 5)
- Fiber Management Accessories (page 5)
- Mighty Mo 6 Cable Management System (page 10)

www.ortronics.com



Anaerobic Adhesive Connectors

Item	Fiber type	Buffer size (µm)	Part No./Single	Part No./25 Pack
LC	Multimode	900	OR-205KAN9GA-MM	OR-205KAN9GB-MM
LC	Single-mode	900	OR-205KAN9GA-SM	OR-205KAN9GB-SM
SC	Multimode	900	OR-205KAN9FA-MM	OR-205KAN9FB-MM
SC	Single-mode	900	OR-205KAN9FA-SM	OR-205KAN9FB-SM
ST	Multimode	900	OR-205KAN9EA-MM	OR-205KAN9EB-MM
ST	Single-mode	900	OR-205KAN9EA-SM	OR-205KAN9EB-SM



Anaerobic Adhesive Termination Kits

Item	Description	Part No.
Anaerobic Field Installable Connector Termination Kit	Contains all tools necessary for complete OptiMo LC, ST and SC anaerobic terminations: contractor bag, micro strip tool, scribe tool, jacket strip tool, scissors, cut length templates, polishing pad, polishing pucks, microscope	OR-85400010
Anaerobic Field Installable Connector Single-Mode Polishing Kit	Consumables necessary for complete OptiMo LC, ST and SC terminations: dispensing tips, syringe, type G polishing paper, type F polishing paper, type M polishing paper (terminates approx. 100 connectors)	OR-85400011
Anaerobic Field Installable Connector Multimode Polishing Kit	Consumables necessary for complete OptiMo LC, ST and SC terminations: kemwhips, dispensing tips, syringe, type G polishing paper, type F polishing paper (terminates approx. 100 connectors)	OR-85400012



Individual Tools and Accessory Items for Anaerobic Connectors

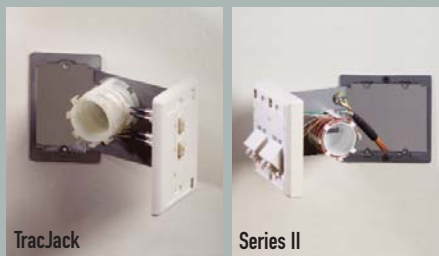
Item	Description	Part No.
Adhesive		OR-70600022
Primer		OR-70600023
Kimwipes	Package of 50 dry whipes	OR-60300179
Dispensing tips	25 pack of dispensing tips	OR-60300182
Syringe	25 pack of syringe applicator	OR-60300183
Type M polish paper	One (1) sheet of type M polishing paper, SM only	OR-60300184
Type F polish paper (diamond paper, SM only)	One (1) sheet of type M polishing paper	OR-60300185
Type G polish paper/20 pk	25 sheets of type G polishing paper	OR-60300186

Swing-Away Workstation Fiber Manager

Single gang and dual gang Swing-Away® Workstation Fiber Managers include a steel mud ring/swing-away door assembly, a plastic fiber management spool, aramid yarn tie-off feature and stand-offs for non-flush Ortronics faceplates.

Swing-Away Workstation Fiber Manager

	Size	Part No.
mud ring and spool	single gang	OR-SA-SG001
	dual gang	OR-SA-DG001



TracJack® Faceplates

Material	Color	Size	Ports	Part No.
plastic	fog white	single gang	1	OR-40300549
			2	OR-40300548
			3	OR-40300547
			4	OR-40300546
			6	OR-40300545
		dual gang	6	OR-40300555

Not compatible with the following faceplates:
OR-40300554, OR-40300620

NOTE: Stainless steel faceplates are not compatible with Swing-Away Fiber Manager.

Series II® Faceplates

Material	Color	Size	Description	Part No.
plastic	fog white	single gang	.50" deep	OR-40300158
			.75" deep	OR-40300011
		dual gang	.75" deep	OR-40300159
			1.65" deep	OR-40300175

Workstation Solutions

Fib-or-Cop II Workstation Outlets for Fiber and Copper

Outlet for Series II® Modules



OR-62100040



OR-62100038

Series II Modules



OR-60900329

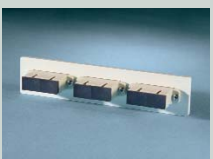


OR-60900343

Base Panels



OR-62100050



OR-62100048

TracJack® Modules



OR-63700039



OR-63700017

Outlet for Series II® Modules (accepts 3)

Description	Size	Part No.
Base and Cover	5" x 8" x 1.9"	OR-62100040
Bottom Shroud (package of 5)		OR-62100038

Outlet for TracJack® Modules (accepts 6)

Description	Size	Part No.
Base and Cover	5" x 8" x 1.9"	OR-62100041
Bottom Shroud (package of 5)		OR-62100038

Base Panels

Interface	Adapter Count	Fiber Capacity	Part No.
LC duplex	6	12	OR-62100050
SC simplex	6	6	OR-62100046
SC duplex	3	6	OR-62100048

TracJack® Modules

Interface	Adapter Count	Fiber Capacity	Units	Exit	Part No.
LC duplex	1	2	1	180	OR-63700039
SC simplex	2	2	1	180	OR-63700066
SC simplex	1	1	1	180	OR-63700017
Blank	—	—	—	—	OR-42100002

Series II Modules

Interface	Adapter Count	Fiber Capacity	Units	Exit	Part No.
LC duplex	2	4	1	180	OR-60900329
			2	45	OR-60900341
LC duplex	1	2	2	45	OR-60900350
SC simplex	2	2	2	45	OR-60900328
SC simplex	2	2	2	45	OR-60900340
SC duplex	2	2	2	180	OR-60900343
SC duplex	1	2	1.5	180	OR-60900184
Blank	—	—	0.5	—	OR-40300144
Blank	—	—	1	—	OR-40300164
Blank	—	—	1.5	—	OR-40300223

NOTE: See web site for copper modules.

Optical Fiber Assemblies

Optimo® Pigtails and Patch Cords

Ortronics/Legrand has selected the best connectors in the industry for fiber system components. Ortronics Fiber Pigtails and Patch Cords can be ordered in various lengths with any standard connector. They are available either in multimode or single-mode fiber. Can't find what you are looking for here? Please contact Ortronics/Legrand sales for additional options.

Pigtail Assemblies

Fibers	Fiber Type	Interface	Part No.
1	50/125 LOMF	LC	OR-626PF9FR-GZ001M
		SC	OR-626PF9FR-FZ001M
	62.5/125 MM	LC	OR-626PA9FR-GZ001M
		SC	OR-626PA9FR-FZ001M
	Single Mode	LC	OR-626PC9FR-SZ001M
		SC	OR-626PC9FR-RZ001M
6	50/125 LOMF	LC	OR-626SF4ZR-GZ001M
		SC	OR-626SF4ZR-FZ001M
	62.5/125 MM	LC	OR-626SA4ZR-GZ001M
		SC	OR-626SA4ZR-FZ001M
	Single Mode	LC	OR-626SC4ZR-SZ001M
		SC	OR-626SC4ZR-RZ001M
12	50/125 LOMF	LC	OR-626TF4ZR-GZ001M
		SC	OR-626TF4ZR-FZ001M
	62.5/125 MM	LC	OR-626TA4ZR-GZ001M
		SC	OR-626TA4ZR-FZ001M
	Single Mode	LC	OR-626TC4ZR-SZ001M
		SC	OR-626TC4ZR-RZ001M

For more optical fiber assemblies, visit www.ortronics.com

Other lengths available

Patch Cords

Fiber	Interface	Length	Part No.
50/125 LOMF	LC - LC duplex	1 m	OR-626DF2LR-GG001M
		2 m	OR-626DF2LR-GG002M
		3 m	OR-626DF2LR-GG003M
	SC - SC duplex	1 m	OR-626DF2LR-FF001M
		2 m	OR-626DF2LR-FF002M
		3 m	OR-626DF2LR-FF003M
	SC - LC duplex	1 m	OR-626DF2LR-FG001M
		2 m	OR-626DF2LR-FG002M
		3 m	OR-626DF2LR-FG003M
62.5/125 MM	LC - LC duplex	1 m	OR-626DA2BR-GG001M
		2 m	OR-626DA2BR-GG002M
		3 m	OR-626DA2BR-GG003M
	SC - SC duplex	1 m	OR-626DA2BR-FF001M
		2 m	OR-626DA2BR-FF002M
		3 m	OR-626DA2BR-FF003M
	SC - LC duplex	1 m	OR-626DA2BR-FG001M
		2 m	OR-626DA2BR-FG002M
		3 m	OR-626DA2BR-FG003M
Single Mode	LC - LC duplex	1 m	OR-626DC2IR-SS001M
		2 m	OR-626DC2IR-SS002M
		3 m	OR-626DC2IR-SS003M
	SC - SC duplex	1 m	OR-626DC2IR-RR001M
		2 m	OR-626DC2IR-RR002M
		3 m	OR-626DC2IR-RR003M
	SC - LC duplex	1 m	OR-626DC2IR-RS001M
		2 m	OR-626DC2IR-RS002M
		3 m	OR-626DC2IR-RS003M

For more patch cords, visit www.ortronics.com

For up-to-date performance specifications, visit www.ortronics.com/fiber-performance



OR-626DF2LR-FF001M



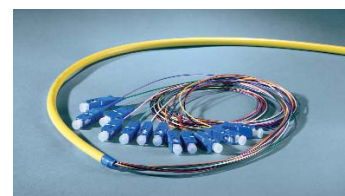
OR-626DF2LR-FG001M



OR-626DF2LR-GG001M



OR-626TF4ZR-GZ001M



OR-626TC4ZR-RZ001M



OR-626SF4ZR-FZ001M

Mighty Mo® 6 Cable Management Racks



Now it's easier than ever to integrate fiber into the industry's leading cable management system.

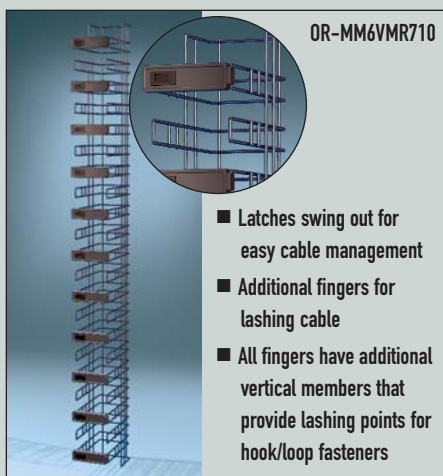
The right cable management system can have an enormous impact on network performance. Mighty Mo® cable management systems provide the strength, support, and flexibility that begins with system design, and continues through years of moves, adds, and changes. Ortronics/Legrand brings years of structured cabling experience into every Mighty Mo 6 system.

- 10.5" channel depth for use with OptiMo fiber enclosures
- Innovative vertical management cages with individual 1-rack-unit fingers and double hinged door
- Covered horizontal cable managers with fingers designed to organize patch cords vertically and horizontally
- A top trough with built-in waterfall providing bend radius control and efficient patch cable routing

- Lightweight, rust-free aluminum construction with durable black powder coat finish which minimizes fingerprints and resists scratching
- Speednuts reduce assembly time
- Static load rating of 1500 lbs

RACK HEIGHT	RACK UNITS	PART NO.
7'	45	OR-MM6710
8'	51	OR-MM6810
Patent No. D360,189		

Rear Vertical Cable Management Cage



- Latches swing out for easy cable management
 - Additional fingers for lashing cable
 - All fingers have additional vertical members that provide lashing points for hook/loop fasteners
- The rear cage provides virtually unlimited lashing points for securing backbone cables
 - The rear cage is designed to install between racks behind the 10" front manager
 - All cable managers include the hardware necessary to mount a cage on two Mighty Mo 6 racks

APPLICATION	RACK HEIGHT	PART NO.
Rear	7'	OR-MM6VMR710
	8'	OR-MM6VMR810
Patent No. 6,365,834		UL LISTED

Front Vertical Cable Management Cage

- The front cage design promotes efficient routing of patch or cross-connect cables between racks
- Double hinged doors open in either direction and can be temporarily removed to allow easy access during moves, adds, and changes
- Cages are supplied with four spools and 12 bend-limiting clips
- All cable managers include the hardware necessary to mount a cage on two Mighty Mo 6 racks

APPLICATION	RACK HEIGHT	PART NO.
Front Center	7'	OR-MM6VMD710
	8'	OR-MM6VMD810
Front End	7'	OR-MM6VMD706
	8'	OR-MM6VMD806

Patent No. 6,946,605, 6, 968,647, 7,026, 553



Mighty Mo 6 Accessories



OR-MM6CMS10

Cable Management Spool for Vertical Management Cage With Door*

Cable management spools effectively manage excess patch cord slack. They mount at rack unit intervals, providing flexibility and proper bend radii for cables. The 11" spools are provided in sets of four.

Part No.	OR-MM6CMS10
----------	-------------

*See OR-MM6VMD710

Mighty Mo 6 Bend-Limiting Clips



OR-MM6BLC

The clips snap on to front vertical management cage fingers to provide bend limitation for patch cords. They provide management flexibility by snapping in place at any position on cage fingers. The 3.25"-long clips are provided in sets of 12.

Part No.	OR-MM6BLC
----------	-----------

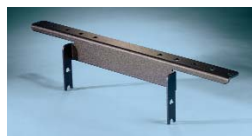


OR-MM6EP710

End Panels

Used to visually finish the end of a row of Mighty Mo 6 racks by concealing cables in the rack channel. The panel mounts flush to the rack and provides a surface for the vertical cable management channel.

Rack Height	Part No.
7'	OR-MM6EP710
8'	OR-MM6EP810



OR-MM6CRB10

Cable Runway Mounting Bracket

Mounts to the top of the Mighty Mo 6 rack to provide a mounting location on the side for 6"-18" ladder racking.

Part No.	OR-MM6CRB10
----------	-------------



OR-MM6CEK10

Ceiling Extension

Mounts to the top of the Mighty Mo 6 rack so the channel can be extended 24". Features a cover to conceal the cables.

Part No.	OR-MM6CEK10
----------	-------------



OR-MM6BDC10

Base Dust Cover

Prevents dust and debris from accumulating in the rack base. Scored for bending to clear cables coming in from the floor up into the channels.

Part No.	OR-MM6BDC10
----------	-------------



CANADA
570 Applewood Crescent
Vaughan, Ontario L4K 4B4
905-738-9195

125 Eugene O'Neill Drive
New London, CT 06320
800-934-5432
860-445-3900 (sales)
860-405-2992 (fax)
www.ortronics.com

rev.03/07