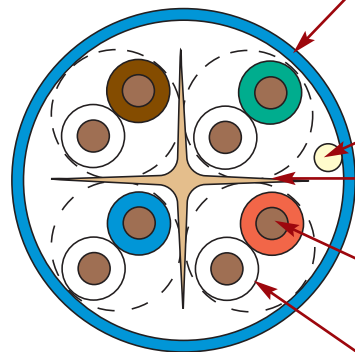
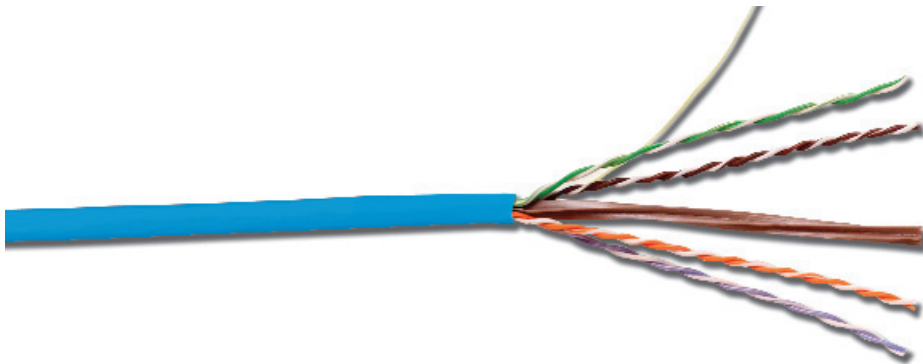


SYSTEM 6® UTP CABLE — US

System 6 cable provides significant headroom above all TIA/EIA and ISO/IEC category 6 transmission performance specifications. Combine our high performance category 6 connectivity with System 6 cable and the result is a system with superior electrical performance for optimum applications support.



CABLE — US



Jacket

- Nominal Cable O.D.:
CMR — 0.222 in.
CMP — 0.215 in.
- Jacket Material:
CMR — PVC
CMP — FRPVC

Rip Cord

- Applied longitudinally under cable jacket

Isolation Member

- Maintains pair geometry before, during and after installation for optimal NEXT loss performance

Conductor

- 0.54mm (0.021 in.) 23-24 AWG solid bare copper

Insulation

- Conductor Insulation:
CMR — PE
CMP — FEP

HIGHLIGHTS

- Transmission performance verified by UL
- Reverse sequential numbering
- Round jacket
- Center isolation member
- Jacket material is lead free

PACKAGING

- 1000 ft. reel
- Weight
CMR — 25 lbs/1000 ft.
CMP — 30 lbs/1000 ft.

STANDARDS COMPLIANCE

- ISO/IEC 11801:2002 (Category 6)
- TIA/EIA-568-B.2-1
- IEC 61156-5:2002 (Category 6)
- UL CMP and CSA FT6
- UL CMR and CSA FT4

ETHERNET APPLICATIONS SUPPORT

- 1000BASE-T • 100BASE-T
- 10BASE-T

Supports any application designed for category 6 or lower cabling

System 6 Plenum 4-Pair UTP Cable (CMP, CSA Type FT6):

9C6P4-E3-(XX)-RXA.....Plenum, 1000 ft. Reel

System 6 Riser 4-Pair UTP Cable (CMR, CSA Type FT4):

9C6R4-E3-(XX)-RXA.....Riser, 1000 ft. Reel

Use (XX) to specify jacket color: 02 = white, 03 = red, 04 = gray, 05 = yellow, 06 = blue, 07 = green

Cable colors highlighted in red in 1000 ft. package indicate FOCUS products which are readily available. Other colors may have extended lead times and minimum purchase requirements.



CONNECTING THE WORLD TO A HIGHER STANDARD

WWW.SIEMON.COM



PRODUCT INFORMATION

Sold by:

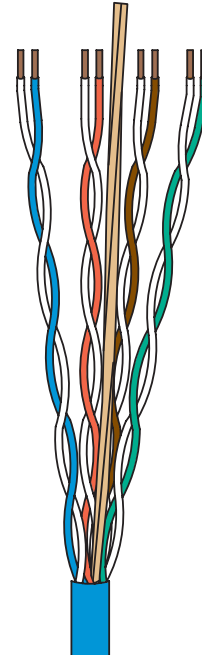


CABLE — US

System 6® UTP Cable

ELECTRICAL SPECIFICATIONS

DC Resistance	<9.38 Ω/100m
DC Resistance Unbalance	5%
Mutual Capacitance	5.6 nF/100m
Capacitance Unbalance	<330 pF/100m
Characteristic Impedance (ohms)	1-100 MHz: 100 ± 15% 100 - 550 MHz: 100 ± 22%
NVP	CMP— 70% CMR— 68%
LCL	30-10log(f/100)dB
Delay Skew	≤ 35ns



PHYSICAL PROPERTIES

	CMP	CMR
Pulling Tension (max)	110N (25 lbf)	110N (25 lbf)
Bend Radius (min)	25mm (1 in.)	25mm (1 in.)
Installation Temperature	0 to 60°C (+32 to 140°F)	-36 to 60°C (-32 to 140°F)
Storage Temperature	-20 to 75°C (-4 to 167°F)	-34 to 75°C (-30 to 167°F)
Operating Temperature	-20 to 60°C (-4 to 140°F)	-34 to 60°C (-30 to 140°F)

TRANSMISSION PERFORMANCE

GUARANTEED WORST CASE
 SIEMON TYPICAL

Frequency (MHz)	Insertion Loss (dB)		NEXT (dB)		PS NEXT (dB)		ACR (dB)		PSACR (dB)		ACR-F (dB)		PS ACR-F (dB)		Return Loss (dB)		Propagation Delay (ns)	
	Guaranteed	Typical	Guaranteed	Typical	Guaranteed	Typical	Guaranteed	Typical	Guaranteed	Typical	Guaranteed	Typical	Guaranteed	Typical	Guaranteed	Typical	Guaranteed	Typical
1.0	2.0	1.8	77.3	87.3	75.3	82.3	75.3	85.5	73.3	80.5	70.8	84.8	68.8	79.8	20.0	29.0	550	545
4.0	3.8	3.5	68.3	78.3	66.3	73.3	64.5	74.8	62.5	69.8	58.8	72.8	56.8	67.8	23.6	32.0	532	527
10.0	5.9	5.6	62.3	72.3	60.3	67.3	56.4	66.7	54.4	61.7	50.8	64.8	48.8	59.8	26.0	38.0	525	520
16.0	7.5	7.1	59.2	69.2	57.2	64.2	51.8	62.1	49.8	57.1	46.7	60.7	44.7	55.7	26.0	34.0	523	518
20.0	8.4	7.9	57.8	67.8	55.8	62.8	49.4	59.9	47.4	54.9	44.8	58.8	42.8	53.8	26.0	34.0	522	517
31.25	10.6	10.0	54.9	64.9	52.9	59.9	44.3	54.9	42.3	49.9	40.9	54.9	38.9	49.9	23.6	32.0	520	515
62.5	15.2	14.4	50.4	60.4	48.4	55.4	35.1	46.0	33.1	41.0	34.9	48.9	32.9	43.9	21.5	32.0	519	514
100.0	19.6	18.6	47.3	57.3	45.3	52.3	27.7	38.7	25.7	33.7	30.8	44.8	28.8	39.8	20.1	32.0	518	513
160.0	25.4	24.1	44.2	54.2	42.2	49.2	18.9	30.1	16.9	25.1	26.7	40.7	24.7	35.7	18.7	31.0	517	512
200.0	28.7	26.8	42.8	52.8	40.8	47.8	14.1	26.0	12.1	21.0	24.8	38.8	22.8	33.8	18.0	29.0	517	512
250.0	32.6	30.5	41.3	51.3	39.3	46.3	8.8	20.8	6.8	15.8	22.8	37.0	20.8	31.8	17.3	29.0	516	511
300.0*	36.1	33.7	40.1	50.0	38.1	45.0	4.0	16.3	2.0	11.3	21.3	36.0	19.3	30.0	16.8	27.0	516	511
400.0*	42.6	40.3	38.3	48.0	36.3	43.0	-4.3	7.7	-6.3	2.7	18.8	32.0	16.8	27.0	15.9	26.0	516	511
500.0*	48.5	39.9	36.8	48.0	34.8	42.0	-11.7	8.1	-13.7	2.1	16.8	31.0	14.8	26.0	15.2	25.0	516	511
550.0*	51.3	39.7	36.2	46.0	34.2	42.0	-15.1	6.3	-17.1	2.3	16.0	30.0	14.0	26.0	14.9	24.0	516	510

*Performance for frequencies above 250 MHz are for information only.

All performance based on 100 meters (328 ft.).

Because we continuously improve our products, Siemon reserves the right to change specifications and availability without prior notice.

MAX®, MC®, BladePatch®, HD®, S210® and System 6® are trademarks of Siemon

For related product information request Spec Sheet(s):

- MAX® 6 Modules (PROD-SS-10G6MXS)
- MC® 6 Modular Patch Cords (PROD-SS-10G6MCS)
- BladePatch 6 (PROD-SS-10G6BDPS)
- HD 6 Patch Panels (PROD-SS-HD6)
- MAX Patch Panels (PROD-SS-MXP)
- S210 Connection System (PROD-SS-S210)
- S210 Patch Plugs (PROD-SS-20P)

The Americas
Watertown, CT USA
Phone (1) 860 945 4200

Europe/Middle East/Africa
Surrey, England
Phone (44) 0 1932 571771

Asia/Pacific
Shanghai, P.R. China
Phone (86) 21 5385 0303

Japan
Tokyo, Japan
Phone (03) 5405 7650

WWW.SIEMON.COM



PROD-SS-SYS6CBLUS Rev. K 11/07 (US)

© 2007 Siemon