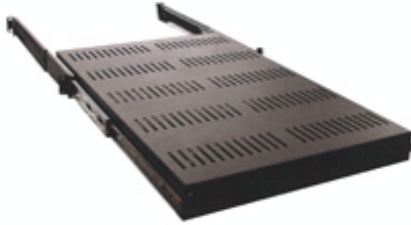




Tripp Lite
1111 West 35th Street
Chicago, IL 60609 USA
Telephone: +(773) 869 1234
E-mail: saleshelp@tripplite.com

Model #: SRSHELF4PSLHD

Heavy Duty Sliding Shelf supports up to 100 lbs.



Highlights

- Heavy Duty Sliding Shelf supports up to 100 lbs.
- Designed for 4 post rack mounting
- 26 inch shelf depth
- Fully extendible shelf accomodates tower units, monitors, and other equipment
- Cold rolled steel with black finish
- Required mounting hardware included

Description

A complete line of SmartRack accessories are available to customize your SmartRack to your application. Designed for easy installation and years of reliable service, SmartRack accessories from Tripp Lite are ideal compliments to your SmartRack enclosure or open frame rack system.

Package Includes

Shelf and mounting hardware

Specifications

PHYSICAL	
Shipping weight (lbs)	18
Shipping Dimensions (HWD/in)	4 x 20 x 27

More information, including related products, owner's manuals, and additional technical specifications, can be found online at www.tripplite.com/products/model.cfm?txtModelID=4000.

©2008 Tripp Lite. All Rights Reserved.



