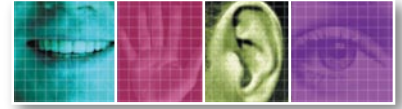


DIGIMERGE™

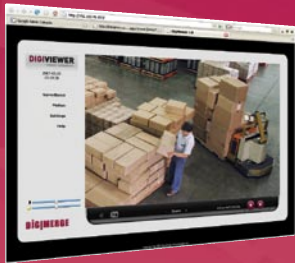
The Benchmark for Value in CCTV



HIGH RESOLUTION PoE DUAL-CO-DEC PROFESSIONAL OUTDOOR DAY/NIGHT NETWORK CAMERA

The Digimerge DNP5320E professional day/night Network camera features a weatherproof aluminum housing and 100ft (30 m) IR Illumination range – making it the ideal choice for surveillance of large outdoor areas, including parking lots and transportation facilities.

DNP5320E



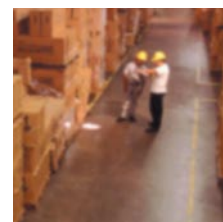
Scalable Multi Channel Recording Application



Professional Camera Mount with (included)



- High Resolution (520TV lines)
- Sony 1/3" Super HAD CCD Image Sensor
- MPEG-4/MJPEG Dual Codec
- Up to full D1 resolution at 30 fps
- Video out for connecting to monitors, DVRs etc.
- Power over Ethernet (802.3af) Built-in
- Weatherproof Aluminum Housing Conforms to IP66
- 100 ft. (30M) IR Range for True Day/Night Operation
- Multi Channel NVR Viewing / Recording Software



STANDARD RESOLUTION



HIGH RESOLUTION

HI-RESOLUTION

FOR SUPERIOR IMAGE QUALITY

3 YEAR WARRANTY

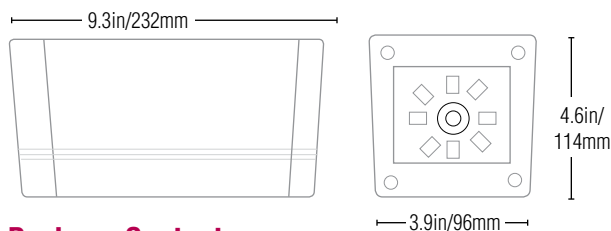
www.digimerge.com

Specifications:

Hardware
Image Sensor: <ul style="list-style-type: none"> • 1/3" Sony SuperHAD CCD • Horizontal resolution: 520TV lines • IR Off - 0.2 Lux (F1.2) / IR On - 0 Lux (F1.2)
Monitoring: Watchdog Chipset: monitors system voltage tolerance and abnormal program execution
Connectors: <ul style="list-style-type: none"> • One RJ-45 connector for Ethernet <ul style="list-style-type: none"> - built-in Power-over-Ethernet (IEEE 802.3af) • One mini-DIN for RS-485/RS-232/GPIO/Video out • RS-485: for external Pan/Tilt (PT) device control • RS-232: for console connection • GPIO: for one fully opto-isolated alarm input and one relay output • Video out: for connecting to CCTV monitors, DVR, etc. • One internal microphone • One 12V DC jack (Optional)
Network
Network Interface: <ul style="list-style-type: none"> • 10/100 Base-T Ethernet Protocols: <ul style="list-style-type: none"> • TCP(UDP)/IP, ICMP, HTTP, FTP, SMTP, DHCP, NTP, DNS, DDNS, RTSP, RTP/TCP(UDP)
Video
Lens: <ul style="list-style-type: none"> • 12mm F1.8 Fixed Lens CCD Adjustment: <ul style="list-style-type: none"> • White Balance (WB/AWB): auto • Gain Control (GC/AGC): auto • Electronic Shutter (ES/AES): on/off Day/Night Functionality: <ul style="list-style-type: none"> • 7 high intensity 850nm IR LED's providing up to 100ft IR Range
Image Compression <ul style="list-style-type: none"> • MPEG-4 Simple Profile (SP); JPEG; MJPEG
Video Adjustment: <ul style="list-style-type: none"> • Brightness, Contrast, Hue, Saturation, Frame rate, Bit rate (Constant Bit Rate (CBR), Variable Bit Rate (VBR) w/ quality levels), Frame Sequence (I-Frame, I-Frame/P-Frame), Group of Pictures (GOP) size (Advanced Features) Resolutions: <ul style="list-style-type: none"> • Full D1 (4CIF): NTSC = 720x480 • CIF: NTSC = 352x240 • QCIF: NTSC = 176x 112
Video Bit Rate: <ul style="list-style-type: none"> • 16K ~ 4M bits/sec (CBR/VBR configurable (high quality VBR settings for MJPEG can reach up to 10Mbps)

Management
Event management <ul style="list-style-type: none"> • Triggers: Motion detection • Manual Recording Installation <ul style="list-style-type: none"> • DigiConsole Utility (PC) Firmware Upgrade <ul style="list-style-type: none"> • Remote upgrade via network Viewers / Browsers Supported: <ul style="list-style-type: none"> • Microsoft Internet Explorer, Firefox, Opera or Apple Safari • Apple Quicktime or compatible RTSP Client Security <ul style="list-style-type: none"> • Password protection Recording <ul style="list-style-type: none"> • FTP to video storage, AVI format
Other
Environmental / Electrical Requirements
Operating Environment: <ul style="list-style-type: none"> • Operating Temperature: -20°C ~60°C (-40° ~ 140°F) • Operating Humidity: 0%~90% RHG • Input Voltage: DC 12V • Power Consumption: 7.5W (PoE), 9.7W (w/IR ON) Power over Ethernet(PoE) <ul style="list-style-type: none"> • PoE device • Compatible with microsemi PoE enabling equipment
Measurements
<ul style="list-style-type: none"> • Unit Dimensions: 96 (W) x 232 (D) x 114 (H)mm / 3.9 x 9.3 x 4.6" (Body Only) • Unit Net Weight: 1.02kg / 2.25lb (Body Only) • Gross Dimensions (incl. Packaging): 12.8" x 5.25" x 6.3" 305mm x 325mm x 135mm • Gross Weight (Incl. Packaging & Accessories): 1.6 Kg/3.6 lbs

Dimensions:



Package Contents:

- Professional Stand with Cable Guide for Wall Mounting
- Mini DIN Cable
- DC Power Cable (Optional Use)
- Multi Channel NVR Viewing / Recording Software