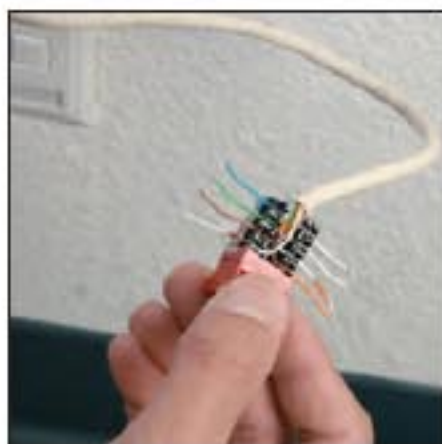


## Perfect terminations are easy with JackRapid



1. Strip cable jacket.



2. Determine wiring scheme.  
Dress all 4 pairs (8 wires).



3. Insert jack in JackRapid  
front first with IDC slots  
facing blades of JackRapid.



4. Ensure jack is completely  
and securely inserted in  
jack holder bed with IDC  
slots facing the blades.



5. Pull trigger completely  
and remove excess wire  
prior to releasing trigger.



6. Wires will be seated and  
cut for a solid termination.



7. Release handle and remove jack  
from JackRapid tool. Visually  
verify proper termination.

## Interchangeable blade heads for use with various jacks



1. Make sure handle is in  
open position.  
Push handle and blade  
toward each other.



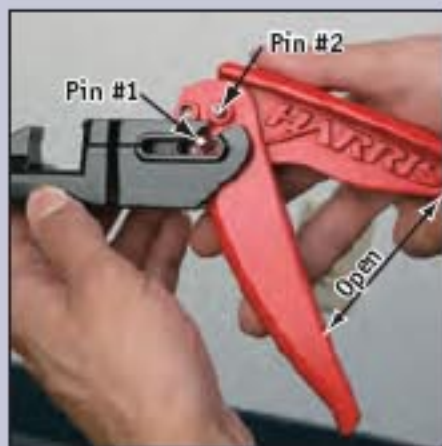
2. Angle handle so that pin  
# 2 will slide out first.  
Then slide out pin # 1.



3. You have successfully  
removed the blade head.



1. Open tool handle and  
move lever to pin #1  
"down" position.



2. Angle handle, and insert  
pin one into blade head  
first. Be sure to keep tool  
handle in open position.



3. Make sure handle is open.  
Once pin #1 has been  
inserted, slide pin #2 into  
blade head.

### NETWORK SUPERVISION

Fluke Corporation  
P.O. Box 777, Everett, WA USA 98206-0777

Fluke Networks operates in more than 50 countries  
worldwide. To find your local office contact details,  
go to [www.flukenetworks.com/contact](http://www.flukenetworks.com/contact).

©2005 Fluke Corporation. All rights reserved.  
Printed in U.S.A. 5/2005 2447816 D-ENG-N Rev B