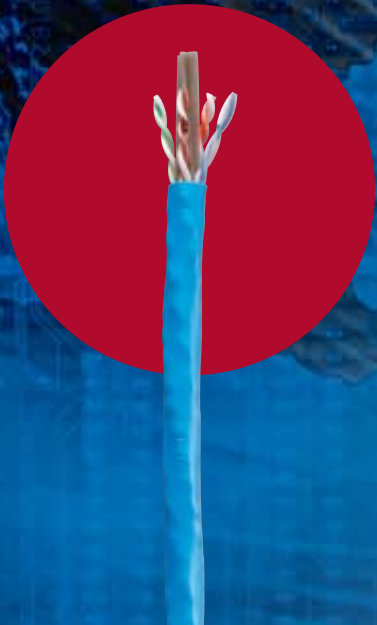


ENHANCED CATEGORY 6 CABLE

SIGNAL STRENGTH AND POWER GenSPEED® 6600

GenSPEED® 6600



STANDARD COMPLIANCES

- ANSI/TIA/EIA-568-B.2-1 (Category 6)
- ANSI/TIA/EIA-862 (Building Automation)
- ISO/IEC 11801 Ed. 2.0 (Class E)
- ICEA S-102-700 (Category 6)
- NEC/CEC Type CMR (UL 1666) for Non-Plenum
- NEC/CEC Type CMP (NFPA 262) for Plenum
- UL 444



APPLICATIONS

- IEEE 802.3: 1000BASE-T (Gigabit Ethernet), 100BASE-TX, 10BASE-T
- ANSI/TIA/EIA-854: 1000BASE-TX
- 155 Mp/s, 1.2 Gb/s ATM
- ANSI X3.263: 100 Mb/s
- IEEE 802.3af DTE Power (PoE)
- 4/16 Mb/s Token Ring
- Digital Video
- Broadband and Baseband Analog Video

CONSTRUCTION

Conductors

- 23 AWG bare annealed copper

Insulation

- Non-Plenum: Polyolefin
- Plenum: FEP

Separator

- Cross-web

Color Code

- Pair 1: Blue-White/Blue
- Pair 2: Orange-White/Orange
- Pair 3: Green-White/Green
- Pair 4: Brown-White/Brown

Rip Cord

- Applied longitudinally under jacket

Jacket

- Non-Plenum: Flame-Retardant PVC
- Plenum: Low-Smoke, Flame-Retardant PVC

PHYSICAL DATA

	CMR (Non-Plenum)	CMP (Plenum)
Nominal Cable Diameter (in)	0.260	0.250
Nominal Cable Weight (lbs/1000ft)	30	32
Minimum Bend Radius (in)	1.0	1.0
Maximum Pulling Force (lbs)	50	50
Temperature Rating (°C) Installation: Operation:	0 to +60 -10 to +60	0 to +60 -10 to +60

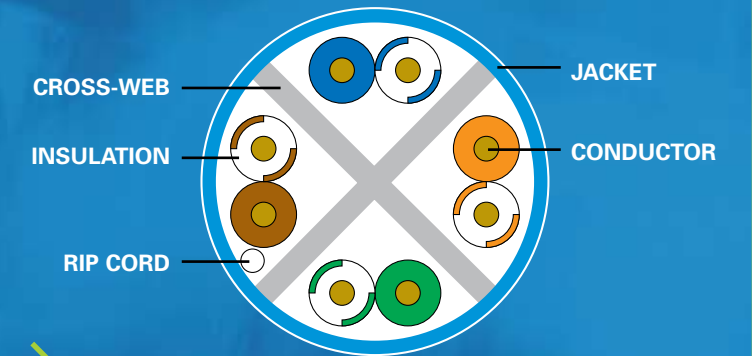
ELECTRICAL CHARACTERISTICS

DC Resistance (max) Ohms/100m (328ft) @ 20°C	8.9
DC Resistance Unbalance (max) Individual Pair %	3.0
Delay Skew (max) ns/100m	45
Nom. Velocity of Propagation % Speed of Light	CMP: 72 CMR: 70
Characteristic Impedance Frequency (f):	Ohms 1-10 MHz 100 ± 15 10-500 MHz 100 ± 10
Input Impedance Frequency (f):	Ohms 1-100 MHz 100 ± 15 100-350 MHz 100 ± 22 350-500 MHz 100 ± 32

FEATURES AND BENEFITS

- New and improved separator construction allowing for more pair separation
- Guaranteed performance up to 500 MHz
- Positive PSACR beyond 400 MHz for increased available bandwidth
- Low Category 6 attenuation performance
- Improved signal-to-noise ratio, reducing network errors and related downtime
- Every master reel is tested for electrical performance compliance
- TRU-Mark® print legend contains footage markings from 1000' to 0'
- Unique product-specific packaging for ease of identification
- Third-party verified for guaranteed performance
- Application assurance warranty

GENSPEED 6600 CABLE CROSS-SECTION



ELECTRICAL PERFORMANCE

Frequency MHz	PSACR (min)	ACR (min)	Insertion Loss (max)	PSNEXT (min)	NEXT (min)	PSELFEXT (min)	ELFEXT (min)	Return Loss (min)	LCL (min)	ELTCTL (min)
1	77.4	79.4	1.9	79.3	81.3	70.8	73.8	20.0	40.0	35.0
4	66.8	68.8	3.5	70.3	72.3	58.8	61.8	23.0	40.0	23.0
10	58.8	60.8	5.5	64.3	66.3	50.8	53.8	25.0	40.0	15.0
16	54.2	56.2	7.0	61.2	63.2	46.7	49.7	25.0	38.0	10.9
20	51.9	53.9	7.8	59.8	61.8	44.8	47.8	25.0	37.0	9.0
31.25	47.0	49.0	9.9	56.9	58.9	40.9	43.9	25.0	35.1	5.1
62.5	38.0	40.0	14.3	52.4	54.4	34.9	37.9	23.5	32.0	—
100	30.8	32.8	18.5	49.3	51.3	30.8	33.8	22.1	30.0	—
200	17.5	19.5	27.2	44.8	46.8	24.8	27.8	20.0	27.0	—
250	12.4	14.4	30.9	43.3	45.3	22.8	25.8	19.3	26.0	—
350	3.5	5.5	37.6	41.1	43.1	19.9	22.9	18.3	—	—
400	0.1	1.6	40.7	40.3	42.3	18.8	21.8	17.9	—	—
500	—	—	46.5	38.8	40.8	16.8	19.8	17.2	—	—

Note: Values are expressed in dB per 100m (328ft) length.

PART NUMBERS

Standard packaging: 1000' Spool-Pac®

Jacket Color	Spool-Pac®	
	CMR (Non-Plenum)	CMP (Plenum)
Blue	7133721	7131721
White	7133722	7131722
Yellow	7133723	7131723
Gray	7133724	7131724
Red	7133725*	7131725*
Orange	7133726*	7131726*
Green	7133727*	7131727*
Black	7133728*	7131728*
Pink	7133729*	7131729*
Purple	7133730*	7131730*

* These items are non-stock and may be subject to minimum order quantities.



Data subject to change without notice.