

# ADA WEATHERPROOF TELEPHONES

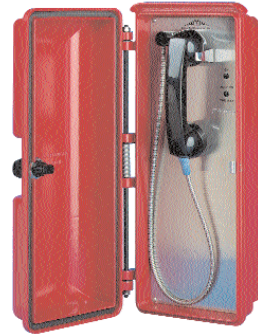


## ALLEN TEL ADA WEATHERPROOF TELEPHONES



GB32390

GB70VN02



GB70H-02



The GB70 Series Telephones are offered in three models. The GB70VS comes with an automatic single number dialer. The GB70VN has no dial (particularly suited for automatic ring down circuit.) The GB72V Model comes with a 12 button tone dial.

All models include: handset with 29' armored cord, amplified receiver, spring loaded door, Braille labels, ID

tones and two LED lamps. The weatherproof housing is constructed of die cast aluminum and electrostatically deposited tough enamel finish. The GB70H housing incorporates a push key lock. The push latch may be disengaged in order to meet local ADA requirements. All housings are e/w gaskets. For available options see page 3. See page 4 for dimensions.

## ADA

All Allen Tel ADA products meet or exceed current AMERICANS WITH DISABILITIES ACTS requirements and e/w amplified receivers per FCC Regulations.

### ORDERING INFORMATION

#### GB70 SERIES TEL SETS LESS HOUSINGS

GB70 SERIES	TEL SETS LESS HOUSINGS
GB70H-XX	N/A
GB70VNXX	GB70VNLH
GB70VSXX	GB70VSLH
GB72VXX	GB72VLH

#### DESCRIPTION

Weatherproof housing only  
 No Dial, can be used with auto ring down circuits, e/w amplified receiver  
 Single line programmable single number dialer. Not recommended for temperatures below 5°F (-20°C) see page 5 for multi-dial capabilities. E/w amplified receiver  
 Single line pushbutton tone dial e/w amplified receiver



**All GB70H housings e/w spring loaded door. All tel sets e/w amplified handset and 29' armored cord.**

**COLOR KEY:** XX denotes housing color - 00 Black, 02 Red, 04 Yellow, 14 Gray. Other colors available on special order.

GB32390SND	Weatherproof speakerphone e/w 11 digit programmable single number dialer. Not recommended for temperatures below 5°F (-20°C)
GB32390	Less dial for automatic ring down circuit.

The GB32390 Series Weatherproof speakerphones are constructed of a high impact poly carbonate material. Two models are available. The GB32390SND which employs an 11-digit automatic single number dialer and the GB32390 less dial for automatic ring down circuit. Both models include: Push button to operate, Braille labels, ID Tone, two minute disconnect, auto answer

and two LED lamps to indicate ON and HELP ON THE WAY.

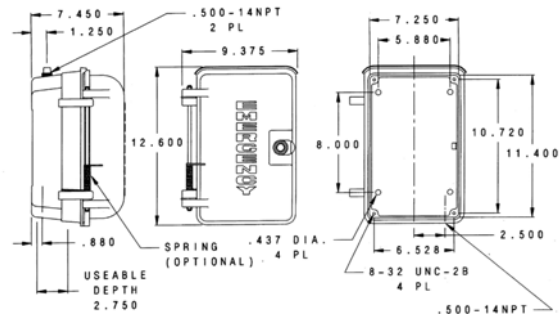
These new weatherproof telephones are particularly suited for ADA applications on university and college campuses, commercial buildings, hospitals, airports, etc. Speakerphone models may not operate properly in an environment with high ambient noise levels.

# WEATHER BEATER WEATHERPROOF TELEPHONES



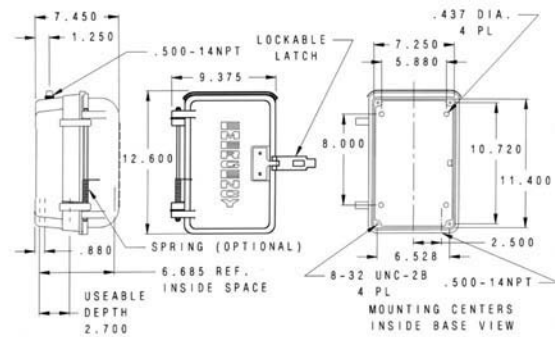
## GB90 SERIES

Wt: Housing Only .....11 lb  
 Wt: e/w tel set .....14 lb



## GB59 SERIES

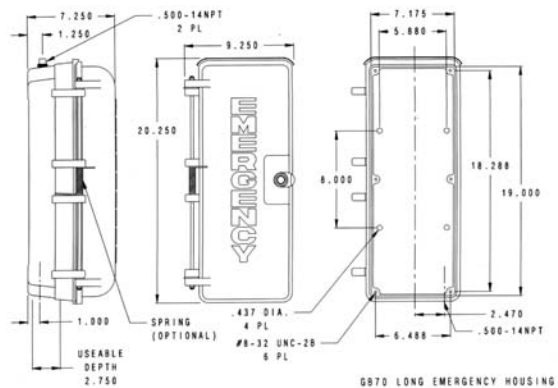
Wt: Housing Only .....12 lb  
 Wt: e/w tel set .....15 lb



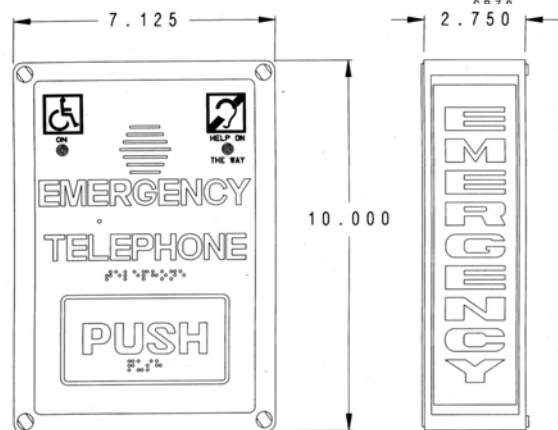
5 lb

## GB70 SERIES

Wt: Housing Only .....15 lb  
 Wt: e/w tel set .....20-21 lb



GB70 LONG EMERGENCY HOUSING WITH LOCK



## GB32390 SERIES

Wt: .....

