

## Patch Panels, LAN

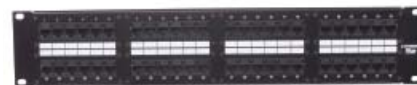
### 1000BASE-T Patch Panels

Hubbell's Gigabit Ethernet series patch panels provide the ultimate in performance and technology incorporated into a simple design. The Gigabit panel has been third-party verified to IEEE 802.3ab for Gigabit Ethernet transmission, ensuring a zero BER Bit Error Rate. The Gigabit panels create a "Plug and Play" connection within the data center easily interfacing between switches (RJ21X) or standard patch panels RJ45).

#### Order Information

Delivery: 1 1000BASE-T patch panel, 4 mounting screws, 4 cable assembly screws

Ports	Height	Width	Depth	Connectors	Catalog No.
24	1.75" (45)	19" (483)	1.2" (31)	Female	<b>PG24</b>
48	3.50" (89)	19" (483)	1.2" (31)	Female	<b>PG48</b>



PG48

### 100BASE-T Patch Panels (Female 50-pin)

Use Hubbell's enhanced 100BASE-T patch panels to connect 10/100BASE-T Fast hubs to a Category 5/5e network. The panel features Category 5 modular 50-pin/25-pair interfaces connected via a printed circuit board to 12 two-pair, 8-position, Ethernet wired RJ45 modular jacks. This PS Category 5 performance, modular 50-pin/25-pair connector is compatible with industry-leading 100BASE-TX and 100BASE-T Fast Ethernet hubs.

#### Order Information

Delivery: 1 100BASE-T patch panel, 4 mounting screws, 4 cable assembly screws

Ports	Height	Width	Depth	Connectors	Catalog No.
24	1.75" (45)	19" (483)	1.2" (31)	Female	<b>MCC24100BT19</b>
48	3.50" (89)	19" (483)	1.2" (31)	Female	<b>MCC48100BT19</b>



MCC48100BT19

### Category 5e, 25-pair Cable Assemblies

Hubbell's 25-Pair cable assemblies are your enhanced interconnect solution for 10/100BASE-T Fast Ethernet or 1000BASE-T Gigabit Ethernet. Our 525PS cable assemblies are provided with 90°, 110° and 180° connectors in various lengths, allowing flexibility and customization at the interconnect.

#### Order Information

Delivery: 1 cable assembly supplied with mounting screws, male-to-male connectors and a choice of various connector configurations.

Connector Angles	Gender	100BASE-T Catalog No.	1000BASE-T Catalog No.
180° to 90°	Male-to-Male	<b>525PS21XXE*</b>	<b>525G21XXE*</b>
180° to 180°	Male-to-Male	<b>525PS22XXE*</b>	<b>525G22XXE*</b>
180° to 110°	Male-to-Male	<b>525PS23XXE*</b>	-

\* XX denotes Length in feet: "05"=5 feet, "10"= 10 feet, "15"= 15 feet.



525PS2205E



525G2105E

### Octopus Cables

#### Order Information

25-Pair Connector	Plug Type	# of Legs	Wiring Format	Catalog No.
180°	RJ45 Cat5e	6	T568B	<b>525PS2R06-XME*</b>
180°	RJ45 Cat5e	12	(1,2,3,6) 10/100B-T	<b>525PS2R12-XME*</b>

\* X denotes Length in meters: "1"=1 meter, "2"= 2 meters, "3"= 3 meters



525PS2R06-1ME

### Telco Panels

#### Order Information

Hubbell's Category 3 telco patch panels exceed all performance requirements of TIA/EIA-568-A for connecting hardware to 16 MHz.

Delivery: 1 patch panel, 4 mounting screws, 4 cable assembly screws

Ports	Height	Description	Connectors	Catalog No.
48	3.50" (89)	8-pos. RJ45 1-6 wired	Male	<b>BRMCC3560619</b>
48	3.50" (89)	6-pos. USOC RJ14	Female	<b>BRMCC25404F19</b>



BRMCC3560619