

Floor and Wall Boxes

Concrete Recessed Floor Boxes

Large Capacity

Hubbell recessed multi-service floor boxes offer unsurpassed capacity while maintaining separation of power from low voltage cables. Service flexibility is unparalleled with blank face plates enhancing your options for future applications.



Large Capacity Floor Box

Step 1: Select floor box.

Description	Catalog Numbers
Stamped steel (fully adjustable).	LCFBSSA
Cast iron (fully adjustable).	LCFBCA

Note: Each floor box is furnished with removable non-metallic chamber plugs for internal wire routing between chambers.

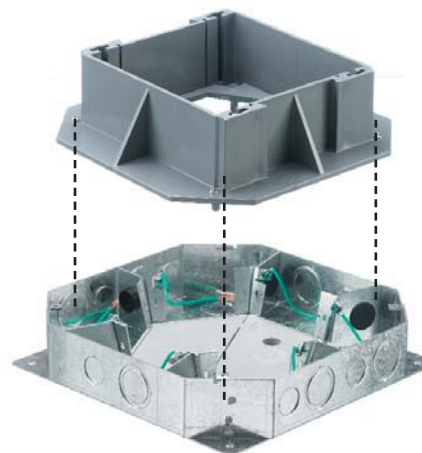
Step 2: Select flush cover & flange.

Option A - Carpet application.

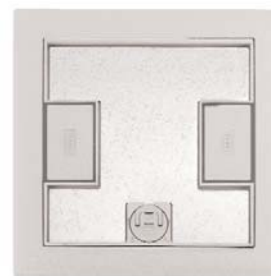
Description	Color	Catalog Numbers
Metallic cover, flange and cable doors.	Brass Finish	LCFBCBRSC
	Aluminum Finish	LCFBCALC
	Gray	LCFBCGYC
	Black	LCFBCBKC
Reinforced nylon cover with thermoplastic (ABS) flange and cable doors.	Brown	LCFBCBRA
	Gray	LCFBCGYA
	Ivory	LCFBCIA
	Black	LCFBCBKA

Option B - Tile application.

Description	Color	Catalog Numbers
Metallic cover, and cable doors.	Brass Finish	LCFBCBRST
	Aluminum Finish	LCFBCALT
	Gray	LCFBCGYT
	Black	LCFBCBKT



LCFBSSA

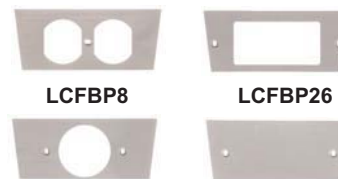


LCFBCGYA

Step 3: Select service plates.

Six nylon face plates required (gray).

Description	Catalog Numbers
Duplex opening.	LCFBP8
Style Line® opening.	LCFBP26
Single receptacle opening - Boss Dia. 1.55" to 1.58" (39.4-40.1).	LCFBP720
Blank.	LCFBP14



LCFBP8

LCFBP26

LCFBP720

LCFBP14

Dimensions

Catalog Numbers	Dimension in Inches (mm)			Adjustability
	L Length	W Width	H Height	Before Pour Adj.
LCFBSSA	12.5" (317.5)	12.5" (317.5)	3.25" (82.6)	1.25" (31.8)
LCFBCA	13.0" (330.2)	13.0" (330.2)	3.25" (82.6)	1.25" (31.8)

Catalog Numbers	Conduit KO's		Conduit Hubs (NPT)	
	Chambers B, E	Chambers A, C, D, F	Chambers B, E	Chambers A, C, D, F
LCFBSSA	one 3/4" and one 1" & 1/4" combination	one 3/4" and one 1" & 1/4" combination	-	-
LCFBCA	-	-	one 3/4" and one 1 1/4"	one 3/4" and one 1 1/4"

Catalog Numbers	Cubic Inch Capacity (cm³)					
	A	B	C	D	E	F
LCFBSSA	38.2 (626.2)	25.4 (416.4)	38.2 (626.2)	38.2 (626.2)	25.4 (416.4)	38.2 (626.2)
LCFBCA	36.8 (603.3)	25.4 (416.4)	36.8 (603.3)	36.8 (603.3)	25.4 (416.4)	36.8 (603.3)

Device Access Area: 124.6 in² (2042.6cm²)

Overall Volume: LCFBSSA: 328.2 (5380.3) UL File No: E31999

LCFBCA: 322.6 (5288.5) CSA File No: LR18416

Minimum depth of pour: LCFBCA- 3.65" (92.7), LCFBSSA- 3.50" (88.9)

