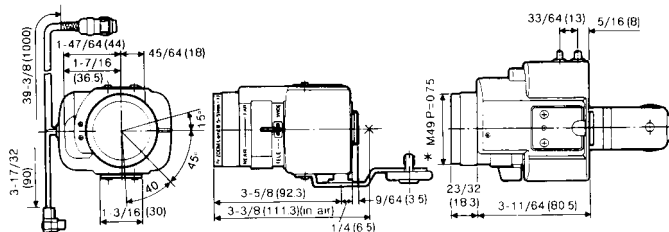


1/2" ZOOM LENS (FOR 1/8" AND 1/2" CCD CAMERAS)

WV-LZ81/6A

6X Zoom Lens



Unit=Inches (mm)

Focal Length	8.5-51mm (6X)	
Maximum Aperture Ratio	F=1:1.2 (wide) F=1:1.3 (tele)	
Image Size	6.4(H)mm x 4.8(V)mm (equivalent to 1/2")	
Angular Field of View 1/2"	H	7.2° (tele); 41.9° (wide)
	V	5.5° (tele); 31.3° (wide)
Angular Field of View 1/8"	H	5.5° (tele); 31.4° (wide)
	V	4.1° (tele); 23.5° (wide)
Min. Object Distance (ft.)	3.3 (1m)	
Optical Filter Size	M49mm, P=0.75mm	

Weight	0.92 lbs. (420g)	
Dimensions (HxWxD)	2 5/8" x 3 3/8" x 3 3/4" (85 x 66 x 114mm)	
Zoom and Focus Control	Control Voltage	±6 to ±12VDC (Accept, Wide Voltage)
	Polarity	Zoom: (+)Tele (-)Wide Focus: (+)Near (-)Far
	Operating Speed	Zoom: Approx. 9 sec. at ±6VDC; 6 sec. at ±8VDC; 4 sec. at ±12VDC Focus: Approx. 8 sec. at ±6VDC; 4 sec. at ±8VDC; 2 sec. at ±12VDC

Focus Control	Far	24mA at -8VDC
	Near	24mA at +8VDC
Zoom Control	Wide	24mA at -8VDC
	Tele	24mA at +8VDC
Iris Type	Automatic	
Mount	Special C-Mount (CS-Mount, 1" -32UN)	
Pin Configuration	1. Common	
	2. Not Used	
	3. Focus	
	4. Zoom	

* Lens has mechanical focus adjustment ring.

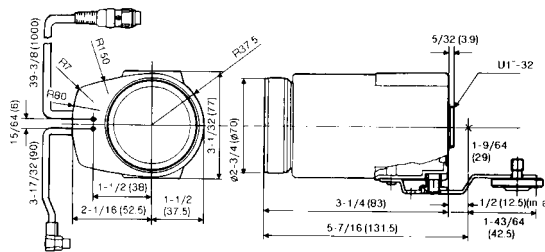
ARCHITECTS' AND ENGINEERS' BID SPECIFICATIONS

The 1/2", automatic iris, 6X zoom lens shall be a Panasonic Model WV-LZ81/6A or equivalent. The lens shall be suitable for use in areas where there is a varying light source. The lens shall be compatible with 1/8" and 1/2" black and white or color CCD cameras. The lens shall have a focal length of 8.5-51mm (6X) and CS-mounting (special C-mount). The unit's optical filter size shall be M49mm, P=0.75mm. The unit shall have a maximum aperture ratio of 1:1.2 wide and 1:1.3 telephoto. The unit shall have an angular field of view of 7.2° telephoto and 41.9° wide(H), and 5.5° telephoto and 31.3° wide(V) in 1/2" format. The unit shall have an angular field of view of 5.5° telephoto and 31.4° wide(H) and 4.1° telephoto and 23.5° wide(V) in 1/8" format. The lens shall have an image format of 6.4(H) x 4.8(V)mm (1/2"). The lens shall not exceed the following dimensions: 2 5/8"H x 3 3/8"W x 3 3/4"D. The focus control shall have the following voltage range and current draw: 24mA at -8VDC (far), 24mA at +8VDC (near). The zoom control shall have the following voltage range and current draw: 24mA at -8VDC (wide), 24mA at +8VDC (telephoto).

1/2" HIGH-SPEED ZOOM LENS (FOR 1/8" AND 1/2" CCD CAMERAS)

WV-LZ83/6

High Speed Aperture 6X Zoom Lens



Unit=Inches (mm)

Focal Length	8.5-51mm(6X)	
Maximum Aperture Ratio	F=1:0.8 (wide) F=1:1.0 (tele)	
Image Size	6.4(H)mm x 4.8(V)mm (equivalent to 1/2")	
Angular Field of View 1/2"	H	7.2° (tele); 41.9° (wide)
	V	5.5° (tele); 31.3° (wide)
Angular Field of View 1/8"	H	5.4° (tele); 31.3° (wide)
	V	4.1° (tele); 23.5° (wide)
Min. Object Distance (ft.)	4 (1.2m)	
Optical Filter Size	M67mm, P=0.75mm	

Ambient Operating Temperature	14°F+122°F (-10°C+50°C)
Weight	1.63 lbs. (740g)
Dimensions (HxWxD)	3 1/2" x 3 3/8" x 4 1/16" (77 x 90 x 119mm)
Control Voltage	±6 to ±12VDC
Polarity	Zoom: (+)Tele (-)Wide Focus: (+)Near (-)Far
Operating Speed	Zoom: Approx. 4 ± 1.5 sec. at ±8VDC
	Focus: Approx. 4 ± 1.5 sec. at ±8VDC

Focus Control	Far	28mA at -8VDC
	Near	28mA at +8VDC
Zoom Control	Wide	28mA at -8VDC
	Tele	28mA at +8VDC
Iris Type	Automatic	
Mount	Special C-Mount (CS-Mount, 1" -32UN)	
Pin Configuration	1. Common	
	2. Not Used	
	3. Focus	
	4. Zoom	

* Lens has mechanical focus adjustment ring.

ARCHITECTS' AND ENGINEERS' BID SPECIFICATIONS

The 1/2" high speed 6X motorized zoom lens with automatic iris lens shall be a Panasonic Model WV-LZ83/6 or equivalent. The 1/2" motorized zoom lens shall have a variable focal length from 8.5mm to 51mm and an aspherical lens element. The lens shall have a maximum aperture ratio of 1:0.8 at the wide angle setting and 1:1.0 at the telephoto setting, and shall be suitable for use in areas where there is a varying light source. The lens shall be compatible with 1/8" or 1/2" black and white or color CCD cameras. The lens shall have CS mounting (special C-Mount) and a filter size of M67mm. The lens shall have an angular field of view of 7.2° to 41.9° (telephoto—wide angle, horizontal view), and 4.1° to 23.5° (telephoto—wide angle, vertical view). The lens shall have an image format of 6.4(H) x 4.8(V)mm (1/2"). The motor shall operate on 6-12VDC control voltage with a current draw not to exceed 28mA. The lens shall not exceed the following dimensions: 3 1/2"H x 3 3/8"W x 4 1/16"L.