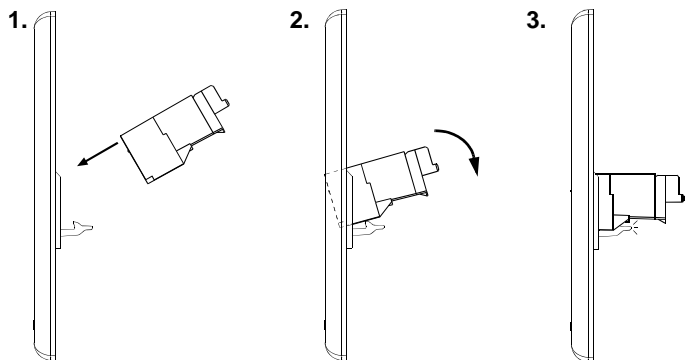


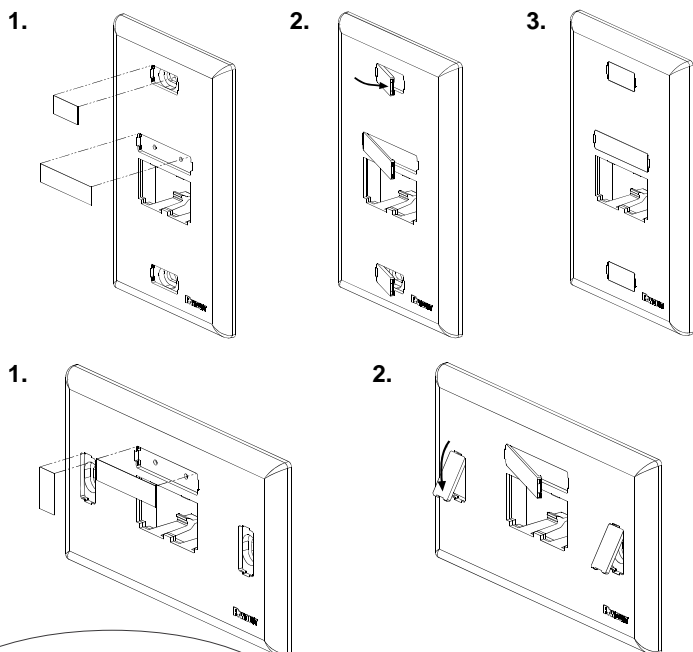
Note: Custom #4 type screw head requires a #1 phillips or 3/16" flat screwdriver be used to install *ULTIMATE ID* faceplate products.

### UICFP & UICFPH INSTALLATION

#### Module Installation

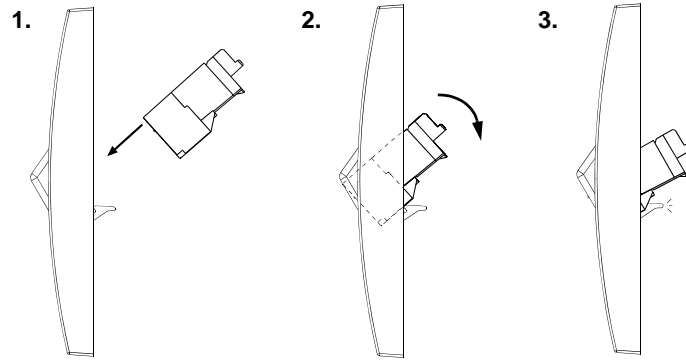


#### Label† / Label Cover Installation

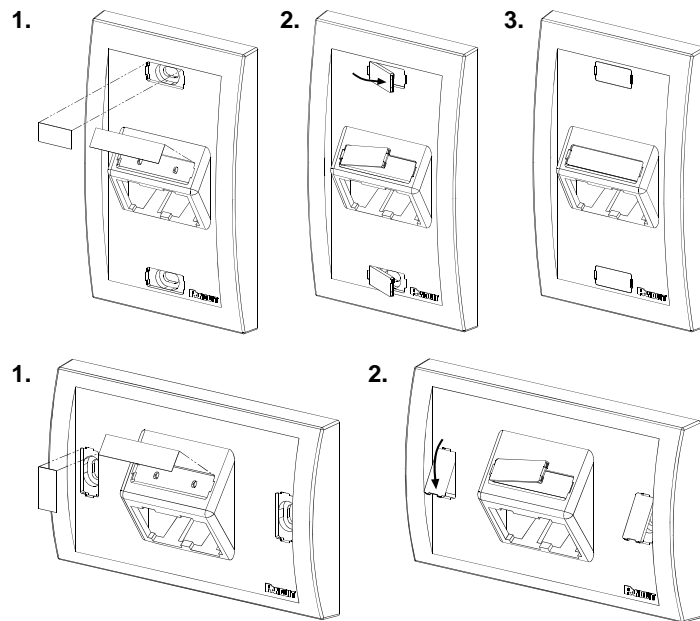


### UICFPSE & UICFPHSE INSTALLATION

#### Module Installation



#### Label† / Label Cover Installation



Sold by:



### Icon Installation (Icons sold as optional accessory)



Icons available with image of Phone (UICIP\*\*) or Computer (UICID\*\*)

† Write on labels are not included with these faceplates per TIA/EIA-606-A standard which states: "To maximize legibility, all labels shall be printed or generated by a mechanical device, and shall not be written by hand." (Refer to table on back side for label products)

# ULTIMATE ID Label Part Numbers

Label Part #	Height	Length	Color	Std. Pkg. Qty.
--------------	--------	--------	-------	----------------

## Computer Printable Labels

UILJ1	.236"	.680"	White	5 sheets
UILJ2	.236"	1.315"	White	5 sheets
UILJ3	.236"	1.950"	White	5 sheets
UILJ4	.236"	2.585"	White	5 sheets
UILJCOMBO	Various	Various	White	5 sheets
UILJ1EI	.236"	.680"	Electric Ivory	5 sheets
UILJ2EI	.236"	1.315"	Electric Ivory	5 sheets
UILJ3EI	.236"	1.950"	Electric Ivory	5 sheets
UILJ4EI	.236"	2.585"	Electric Ivory	5 sheets
UILJCOMBOEI	Various	Various	Electric Ivory	5 sheets

## Non-Adhesive Label Cassette (for use with *PANACEA* LS7 Thermal Transfer Printer)

*UILS7BW	1/4"	26.2'	Black / White	1
----------	------	-------	---------------	---

\* See *PANDUIT* LS7 Operations Manual to explain serialized function for label printing and page function for non-serialized label printing.



For Instructions in Local Languages  
and Technical Support:

[www.panduit.com/resources/install\\_maintain.asp](http://www.panduit.com/resources/install_maintain.asp)



[www.panduit.com](http://www.panduit.com)

E-mail:  
[cs@panduit.com](mailto:cs@panduit.com)

Fax:  
(708) 444-6993