

FASTTRAC™ ACCESSORIES for CPI FastTrac Cable Tray

KEY FEATURES

- Protect cables from physical damage.
- Create multiple cable pathways in a single cable tray.
- Easy installation.

APPLICATIONS

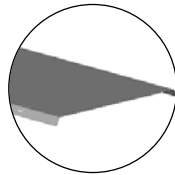
- FastTrac Divider organizes cables by type and destination.
- FastTrac Bottom Insert improves aesthetics in open overhead installations.
- FastTrac Radius Drop eliminates sharp cable bends where cable enters or exits the tray.
- FastTrac Bend Radius guides cables around tray intersections.
- FastTrac Cover helps prevent the improper use of tray for non-communications cables.

USE WITH

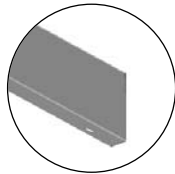
- FastTrac Cable Tray
- FastTrac Washer Splice Kit

RELATED ACCESSORIES

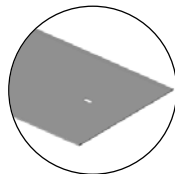
- FastTrac Ceiling Supports
- FastTrac Wall Supports
- FastTrac Floor Supports
- FastTrac Rack Support Bracket
- FastTrac Installation Tools



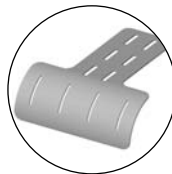
Cover



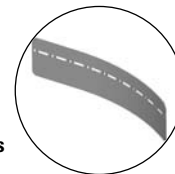
Divider



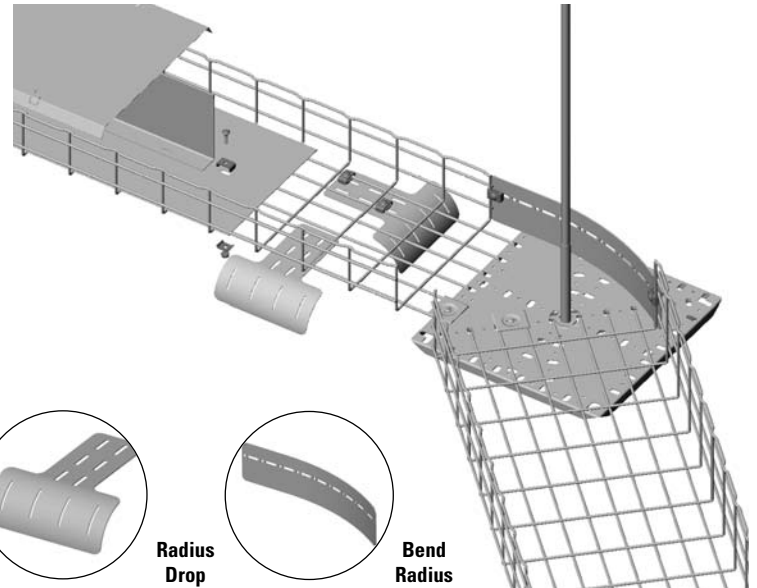
Bottom Insert



Radius Drop



Bend Radius



FastTrac™ Accessories protect and organize cable within FastTrac Cable Tray. FastTrac Cable Tray is used to create point-to-point pathways for communications cabling. FastTrac is used under raised floors in the Data Center or overhead in the office space.

Communications cabling, requires special care to maintain high circuit performance. Organization is key. FastTrac Divider allows users to easily divide the cable tray into multiple sections to organize cable by type or destination. This allows easier tracing of cables when performing a move, add or change.

Cabling must not be stretched or bundled so tightly that the cable is deformed. FastTrac Bottom Insert hides cables from view when FastTrac is installed overhead. FastTrac Bottom Insert also provides a continuous flat surface for cables eliminating concerns about pinching of cables against the bottom of deeper trays that are full of cable.

Cables cannot have sharp bends and must be formed into smooth curves when changing direction. FastTrac Radius Drop should be used when cables exit the end or side of horizontal cable tray. Radius Drops provide a smooth curve to guide and support cable as it enters or exits the tray.

FastTrac Bend Radius connects the side walls of intersecting FastTrac Cable Tray to form a smooth radius that guides cables around the corner. FastTrac Bend Radius can also be used to connect FastTrac Dividers across intersections.

The space above drop ceilings and below raised floors may be used for routing other building services, so cables must be protected from physical damage due to routine service work. FastTrac Cover prevents damage to cable from other services that may be in close proximity to the FastTrac Cable Tray. It also provides some dust protection and secures the pathway from intrusion of non-communicating services.

Products are listed on the reverse. Contact CPI Technical Support (800-834-4969) for configuration assistance.





SPECIFICATIONS

FastTrac Divider

- Attach to FastTrac Cable Tray
- Match to height of tray
- Attach with (4) washer splice kits (sold separately)
- Sizes:
 - Heights: 2", 4" or 6"
 - Length: 10'
- Material: 18 GA Steel
- Construction: Formed
- Finish: Pre-galvanized before fabrication

FastTrac Bottom Insert

- Fits inside FastTrac Cable Tray
- May be additionally secured with (2) washer splice kits (sold separately)
- Available sizes:
 - Widths: 4", 6", 8", 12", 16", 18", 20", 24"
 - Length: 10'
- Material: 18 GA Steel
- Construction: Formed
- Finish: Pre-galvanized before fabrication

FastTrac Radius Drop

- Attach to FastTrac Cable Tray
- Clips on for perpendicular drop-out
- Attaches with (2) washer splice kits for parallel drop-out
- Size:
 - Height: 2 9/16"
 - Width: 7 3/4"
 - Length: 8"
 - Radius: 2 1/2"
- Material: 18 GA Steel
- Construction: Formed as one-piece
- Finish: Zinc Electroplated after fabrication

FastTrac Bend Radius

- Attach to FastTrac Cable Tray
- Match to height of tray
- Bend to form corner and attach with washer splice kit (sold separately)
- Sizes:
 - Height: 2", 4" or 6"
 - Length: 18"
- Material: 18 GA Steel
- Construction: Formed
- Finish: Pre-Galvanized before fabrication

FastTrac Cover

- Fits over FastTrac Cable Tray
- Available sizes:
 - Widths: 4", 6", 8", 12", 16", 18", 20" 24"
 - Length: 10'
- Material: 18 GA Steel
- Construction: Formed
- Finish: Pre-galvanized before fabrication

FastTrac Bend Radius



FastTrac Divider



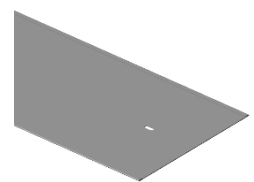
FastTrac Cover



FastTrac Radius Drop



FastTrac Bottom Insert



ORDERING INFORMATION

FastTrac Accessories for CPI FastTrac Cable Tray		
Part Number	Description	Shipping Weight
13358-502	Divider, 2"H X 10'L	7 lb
13358-504	Divider, 4"H X 10'L	10 lb
13358-506	Divider, 6"H X 10'L	15 lb
13360-504	Bottom Insert, 4"W X 10'L	6 lb
13360-506	Bottom Insert, 6"W X 10'L	10 lb
13360-508	Bottom Insert, 8"W X 10'L	12 lb
13360-512	Bottom Insert, 12"W X 10'L	18 lb
13360-516	Bottom Insert, 16"W X 10'L	24 lb
13360-518	Bottom Insert, 18"W X 10'L	27 lb
13360-520	Bottom Insert, 20"W X 10'L	30 lb
13360-524	Bottom Insert, 24"W X 10'L	35 lb
13363-001	Radius Drop, 6"	1 lb
13386-502	Bend Radius, 2"H	1 lb
13386-504	Bend Radius, 4"H	1 lb
13386-506	Bend Radius, 6"H	2 lb
13359-504	Cover, 4"W X 10'L	6 lb
13359-506	Cover, 6"W X 10'L	7 lb
13359-508	Cover, 8"W X 10'L	9 lb
13359-512	Cover, 12"W X 10'L	12 lb
13359-516	Cover, 16"W X 10'L	16 lb
13359-518	Cover, 18"W X 10'L	17 lb
13359-520	Cover, 20"W X 10'L	19 lb
13359-524	Cover, 24"W X 10'L	23 lb
13364-001	Washer Splice Kit, 50 pack	4 lb

