

# FASTTRAC™ CEILING SUPPORTS for CPI FastTrac Cable Tray



## KEY FEATURES

- Provide overhead support for FastTrac Cable Tray.
- Easy to install, add-anywhere supports.
- Quick attachment of FastTrac Cable Tray.

## APPLICATIONS

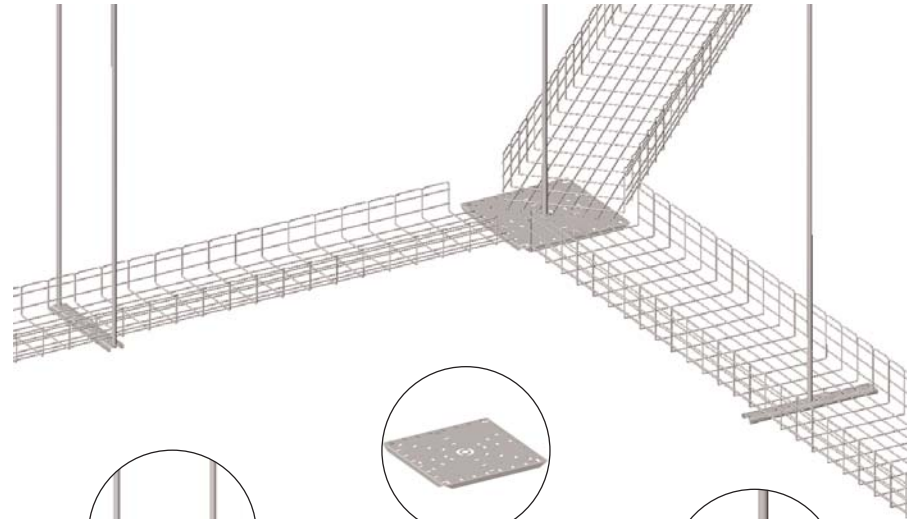
- Provide overhead support for FastTrac Cable Tray from the ceiling within office spaces. FastTrac may be used within a drop ceiling.
- FastTrac Ceiling Supports attach tray to building ceiling structure using 3/8" threaded rod.
- FastTrac Intersection Support Plate creates X, T or L intersections without the need to manually cut and splice trays.

## USE WITH

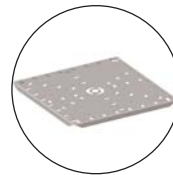
- FastTrac Cable Tray
- FastTrac Splices & Fasteners
- 3/8" threaded rod and hardware

## RELATED ACCESSORIES

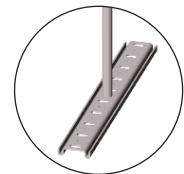
- FastTrac Wall Supports
- FastTrac Floor Supports
- FastTrac Rack Support Bracket
- FastTrac Installation Tools
- FastTrac Accessories



**Trapeze Support Bracket**



**Intersect Support Plate**



**Center Support Bracket**

FastTrac™ Cable Tray is used to create point-to-point pathways for communications cabling.

FastTrac Cable Tray may be suspended from the ceiling with FastTrac Ceiling Supports. Ceiling supports are attached to the ceiling with 3/8" threaded rod and anchors or I-beam clamps. Supports should be placed every 5' or less.

FastTrac Center Supports are T-shaped supports that use a single 3/8" threaded rod to attach to the ceiling. Center Supports are ideal for single pathways and can be stacked to create multi-tier pathways.

FastTrac Trapeze Supports are formed bars in various lengths that use two 3/8" threaded rods to attach to the ceiling. Trapeze Supports can be used with one or several FastTrac Cable Trays, allowing multiple pathways to use the same support structure.

FastTrac Intersection Support Plate is the quickest way to form a 90°, 45° or 22.5° intersection. Place FastTrac Intersection Support Plate over a FastTrac Center Support and simply drop the ends of the tray into the pre-punched slots on the pan. FastTrac Intersection Support Plate creates elbows, tees and crosses without the need to trim, form and splice individual tray sections together.

Use FastTrac Ground Washer to attach FastTrac Cable Tray to the supports. FastTrac Ground Washer creates a continuous bond between tray sections.

Products are listed on the reverse. Contact CPI Technical Support (800-834-4969) for configuration assistance.



**SPECIFICATIONS**

**FastTrac Center Support**

- Supports a single tray
- Use one support every 5' of span
- Widths: 4", 8", 12", 16", 20", 24"
- Material: 12 GA Steel and 1/2" diameter conduit
- Construction: Formed & welded
- Finish: Zinc Electroplated after fabrication
- Installation requires (1) 3/8" threaded rod and hardware (not included)

**FastTrac Trapeze Support**

- Supports a single or multiple trays
- Use one support every 5' of span
- Widths: 4", 8", 12", 16", 20", 24"
- Material: 12 GA Steel
- Construction: Formed
- Finish: Zinc Electroplated after fabrication
- Installation requires (2) 3/8" threaded rods and hardware (not included)

**FastTrac Intersect Support Plate**

- Creates a X, T, Y or L-shaped intersection
- Use with FastTrac Center Support
- Three sizes: 4"-8", 12"-16", or 18"-24"
- Material: 14 GA Steel
- Construction: Formed
- Finish: Zinc Electroplated after fabrication
- Installation required FastTrac center support and 3/8" threaded rod and hardware (not included)

**FastTrac Ground Washer**

- Used to secure tray to supports
- Sold in pack of 50 each
- Each splice kit includes:
  - (1) 1/4"-20 x 1" self-threading machine screw
  - (1) 2" square splice washer
- One Ground Washer is required for each ceiling support
- Material: 14 GA Steel
- Construction: Formed
- Finish: Zinc Electroplated after fabrication

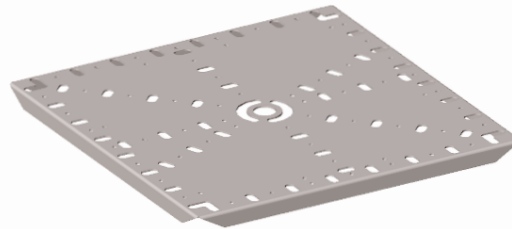
FastTrac Center Support



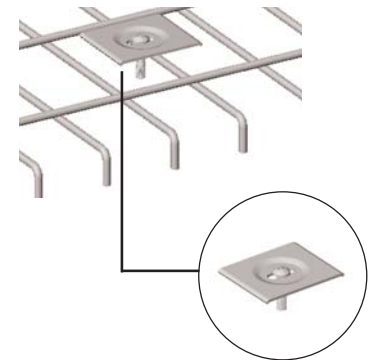
FastTrac Trapeze Support



FastTrac Intersect Support Plate



FastTrac Ground Washer



**ORDERING INFORMATION**

FastTrac Ceiling Supports for CPI FastTrac Wire Mesh Cable Tray		
Part Number	Description	Shipping Weight
13354-004	Center Support Bracket, 4"W	1 lb
13354-008	Center Support Bracket, 6"W-8"W	1 lb
13354-012	Center Support Bracket, 12"W	2 lb
13354-016	Center Support Bracket, 16"W	2 lb
13354-020	Center Support Bracket, 18"W-20"W	3 lb
13354-024	Center Support Bracket, 24"W	3 lb
13353-004	Trapeze Support Bracket, 4"W	1 lb
13353-008	Trapeze Support Bracket, 6"W-8"W	1 lb
13353-012	Trapeze Support Bracket, 12"W	2 lb
13353-016	Trapeze Support Bracket, 16"W	2 lb
13353-020	Trapeze Support Bracket, 18"W-20"W	3 lb
13353-024	Trapeze Support Bracket, 24"W	3 lb
13357-008	Intersect Support Plate, 4"W-8"W	2 lb
13357-016	Intersect Support Plate, 12"W-16"W	5 lb
13357-024	Intersect Support Plate, 20"W-24"W	12 lb
13361-001	Ground Washer, 50 pack	7 lb

NOTE: CPI offers 3/8" threaded rod, anchors, I-beam clamps and hardware.