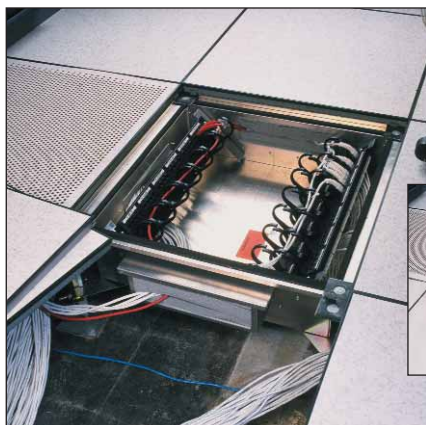


# RAISED FLOOR ENCLOSURES

## APPLICATIONS



**Raised Floor Enclosures** fit under a single 2' x 2' raised floor tile. Most models use the raised floor tile as a "lid". Enclosures are UL Listed Enclosures, suitable for low voltage and active applications and for use in air handling spaces. A variety of sizes are available to match floor height. Most models include brackets for attachment to raised floor support pedestals. Enclosures include threaded equipment mounting rails and have multiple, edge-protected cable access ports with fire-rated foam sealing kits.

In enclosures designed for use in low height floors, two facing pairs of pivoting equipment mounting rails are used to provide easy access to the front and rear of the patch panel. In deeper enclosures, single or split rails that are parallel to the floor provide higher consolidation point capacity. There is also a model with a lift out tray that can support active components. Order #12-24 equipment mounting screws separately.

## PRODUCTS



A0822-RF



A1411-RF-HR



A0802-RF-DI

## Raised Floor Enclosure for Patch Panels

These enclosures use the raised floor tile as a "lid". (All models, except A0222-RF, include raised floor installation brackets.)

Raised Floor Enclosures with Pivoting Mounting Rails			
Part Number	Description	Color	Shipping Weight
A0222-RF	1U+1U Enclosure for 2"D Floor	Clear	10 lb
A0422-RF	1U+1U Enclosure for 4"D Floor	Clear	10 lb
A0622-RF	2U+2U Enclosure for 6"D Floor	Clear	23 lb
A0822-RF	4U+4U Enclosure for 8"D Floor	Clear	23 lb

Raised Floor Enclosures with Fixed Mounting Rails			
Part Number	Description	Color	Shipping Weight
A1422-RF	11U Enclosure for 14"D Floor	Clear	30 lb

## Raised Floor Enclosure for Active Components

Features a lift-out tray for 2U x 10-1/4" deep of active components and 5U (divided 2U-1U-2U) for passive connectivity. Includes a junction box for a duplex power outlet and a fan to remove heat generated by active components.

Raised Floor Enclosure for Active Components			
Part Number	Description	Color	Shipping Weight
A1411-RF-HR	7U Enclosure for 14"D Floor	Clear	30 lb

## Raised Floor Enclosure with Locking Cover for Patch Panels

"Drop-In" Enclosure measures 21-1/4" x 22-1/4" and includes a locking cover for use completely below raised floor tiles. Installation only requires the removal of one floor tile. Enclosure features pivoting mounting rails similar to models above and is perfect for existing data centers.

Raised Floor Enclosure with Locking Cover			
Part Number	Description	Color	Shipping Weight
A0802-RF-DI	4U+4U Enclosure for 9"D Floor	Clear	25 lb