

# Dedicated T-8 Bi-Pin Fluorescent Lampholder

## Features Snap-In/Slide-On Design and Lamp-Lock

### Accepts Energy-Efficient T-8 Fluorescent Lamps Only

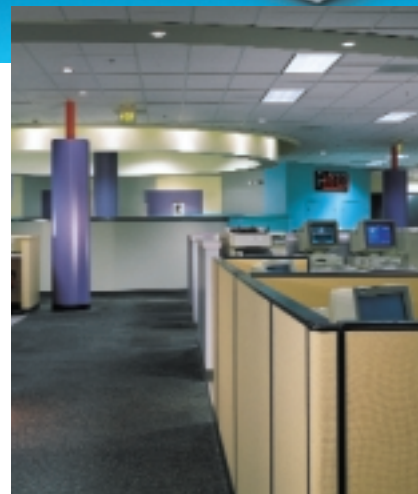
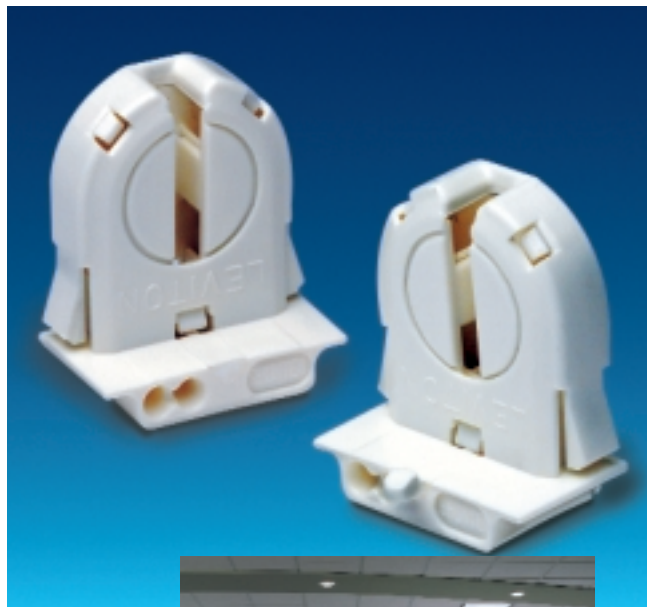
Innovative features make it a snap to incorporate Leviton's versatile new lampholder into your fixture designs. Styled for convenience, the lampholder provides a user-friendly combination of benefits. These include front push-in wiring ports for easier access, snap-in or slide-on mounting options, and a 4-position, positive-stop lamp-lock that makes it simple for end-users to relamp in service. The extra-low profile thermoplastic lampholder fits the thin 22 to 25 gauge panels preferred by OEM's to create smaller, more cost-effective fixtures. It also has an optional panel locator pin. While other lampholders accept both T-8 and T-12 lamps, Cat. Nos. 13652 (non-shunted) and 23652 (shunted) are dedicated only for energy-efficient T-8's. The lampholder is an exciting new addition to the Leviton line of high-quality OEM products.

### Applications:

- Indoor lighting for retail, commercial and industrial facilities
- Educational facilities

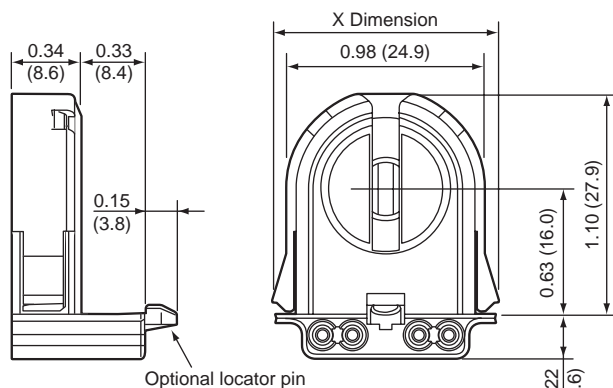
### Features and Benefits:

- Versatile snap-in or slide-on mounting reduces fixture assembly time
- Four-position lamp-lock socket rotates 90°, forward and back, for quick relamping
- Anti-vibration lamp-lock design ensures secure lamp fit
- Slim, low-profile silhouette fits 22 to 25 gauge panels
- Front push-in wiring provides easier access to wire ports
- Lampholder fits energy-efficient T-8 lamps only, eliminating the possibility of use with less efficient T-12 lamps
- Cat. No. 23652 provides internal shunt connection for use with electronic ballasts. Back of lampholder is stamped "S" for shunted
- Optional panel locator post
- Chemical-resistant white thermoplastic body
- Push-in wiring terminals accept No. 18 AWG solid or twisted-and-overtinned leads, stripped 3/8 inch

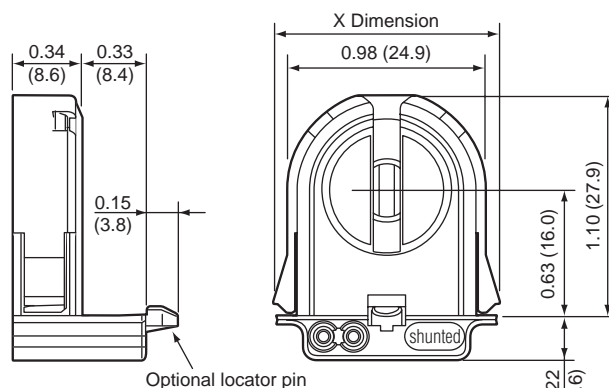


## Dimensional Drawings:

For use with 20 to 25 gauge panels



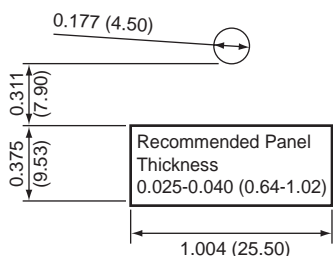
**Cat. No. 13652**



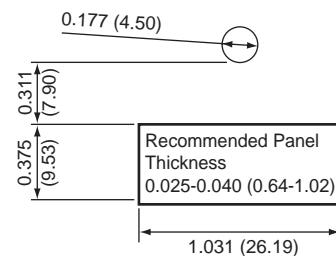
**Cat. No. 23652**

## Agency Standards

- Rating 660W-600V
- UL Listed (File #E-5833)
- CSA Certified (File #LR-1863)
- NOM Certified #057
- VDE Certified to IEC



For all -WP, -NP models



For all -WWP, -WNP  
wide-wing models

**NOTE:** Dimensions in parentheses are in millimeters. All other dimensions are in inches.

## Ordering Information:

Cat. No.	X Dimension	Description
13652-WP	1.12 (28.4)	Medium Bi-Pin Snap-In or Slide-On Fluorescent Lampholder, T-8 dedicated, with lamp lock.
13652-NP	1.12 (28.4)	Same as above less locator post.
23652-WP	1.12 (28.4)	Same as 13652-WP, except with internal shunt connection for use with electronic ballasts. Back of lampholder is stamped "S" to identify shunt and help prevent improper applications.
23652-NP	1.12 (28.4)	Same as above less locator post.
13652-WWP	1.15 (29.2)	Medium Bi-Pin Snap-In or Slide-On Fluorescent Lampholder, T-8 dedicated, with lamp lock. Wide-wing design.
13652-WNP	1.15 (29.2)	Same as above less locator post.
23652-WWP	1.15 (29.2)	Same as 13652-WWP, except with internal shunt connection for use with electronic ballasts. Back of lampholder is stamped "S" to identify shunt and help prevent improper applications.
23652-WNP	1.15 (29.2)	Same as above less locator post

### Leviton Manufacturing Co., Inc.

59-25 Little Neck Parkway, Little Neck, New York 11362-2591

- Tel: 1-800-833-3532 • Tech Line (8:30AM-7:30PM ET, Mon.-Fri.): 1-800-824-3005
- FAX: 1-800-832-9538
- Web site: [www.leviton.com](http://www.leviton.com) • Email: [info@leviton.com](mailto:info@leviton.com)

### Leviton Manufacturing of Canada, Ltd.

165 Hymus Blvd., Pointe Claire, Quebec H9R 1E9  
Tel: 1-800-469-7890 • FAX 1-800-563-1853



Because Leviton engages in a continuous program of product improvement, all data in this publication is subject to change without notice.