

## 15 Series — Taper Nose — Up to 125 AMP,\* 600V

### Panel Receptacle—Threaded Stud (Cable Size: #8—#4)

	MALE	FEMALE
COLOR	CAT. NO.	CAT. NO.
Black	15R21-E	15R22-E
White	15R21-W	15R22-W
Red	15R21-R	15R22-R
Blue	15R21-B	15R22-B
Green	15R21-G	15R22-G
Yellow	15R21-Y	15R22-Y
Orange	15R21-O	15R22-O
Brown	15R21-H	15R22-H

### Protective Caps

	MALE	FEMALE
COLOR	CAT. NO.	CAT. NO.
Black	15P21-E	15P22-E

### Three-way "T" Connector

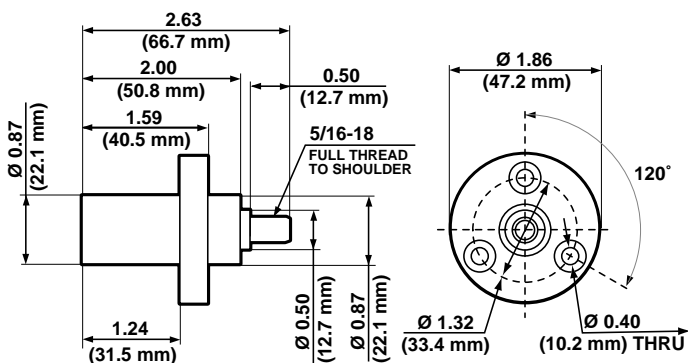
	PARALLELING T FEMALE-MALE-MALE	TAPPING T FEMALE-FEMALE-MALE	DOUBLE FEMALE FEMALE-FEMALE
COLOR	CAT. NO.	CAT. NO.	CAT. NO.
Black	15A21-E	15A22-E	15A23-E
White	15A21-W	15A22-W	15A23-W
Red	15A21-R	15A22-R	15A23-R
Blue	15A21-B	15A22-B	15A23-B
Green	15A21-G	15A22-G	15A23-G

### SPECIFICATIONS & FEATURES

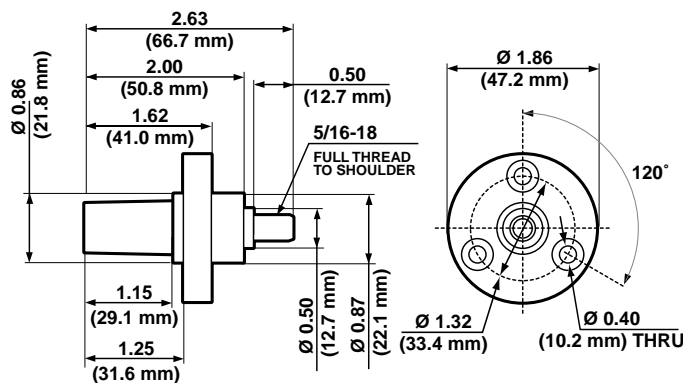
- The 15 Series Taper Nose mini-cam plugs, receptacles and connectors are tough and reliable. Primary applications include carnivals and theme parks, as well as the entertainment industry

### TESTING & CODE COMPLIANCE

- UL Listed E-151429
- NEMA 3R-Rated (Rainproof) for use outdoors



MALE PANEL RECEPTACLE THREADED STUD  
Cat. No. 15R21



FEMALE PANEL RECEPTACLE THREADED STUD  
Cat. No. 15R22

\*Refer to Ampacity Chart for all cable sizes on page 2

