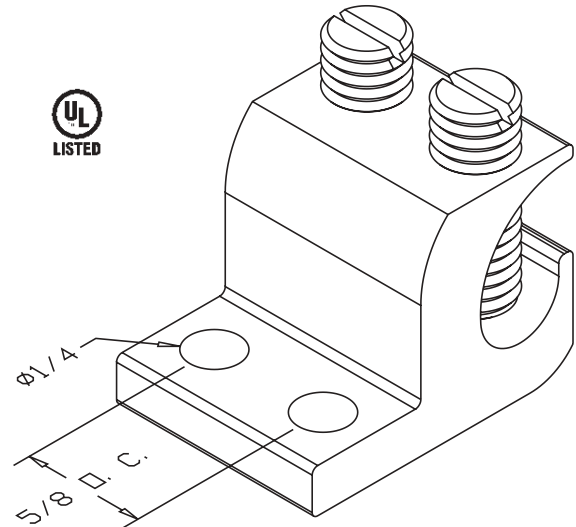


Product Information Sheet

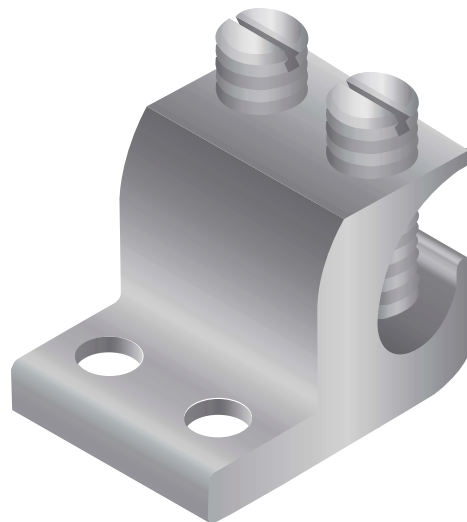
TWO MOUNTING HOLE GROUND TERMINAL BLOCK

CPI's Two Mounting Hole Ground Terminal Block provides a convenient way to attach ground wires to racks or cabinets and meets BICSI and ANSI/EIA/TIA two-hole mounting recommendations. Constructed of extruded, high-strength aluminum and accepts conductors ranging from #14 AWG through 2/0. Includes two #3/8-24 x 7/8" L stainless steel set screws.

- Manufactured from electroplated tin aluminum
- UL Listed
- Available individually or in packages of 10



Part Number	Description	Unit	Wire Size	Shipping Weight
40167-001	Two-Hole Block	1	#14-2/0	1 lb
40167-010	Two-Hole Block	10	#14-2/0	10 lb



800-834-4969 in U.S. & Canada • www.chatsworth.com