



VERSATAP MODULAR 5e V.I.P. PATCH PANELS



CATEGORY 5e 110 PATCH PANELS

High Speed Performance

Allen Tel's Category 5e Modular to 110 Printed Circuit Board (PCB) Patch Panels are designed to support 155 MHz cross connect transmission for UTP Cabling Systems utilizing category 5e compliant or performance rated cable.

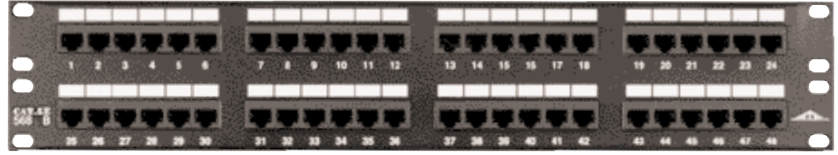


FEATURES

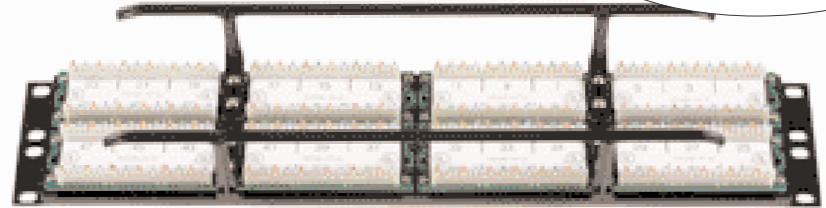
- Exceeds category 5e requirements
- Identification strips
- Wire management on rear of panel and e/w AT55CSB Cable Support Bars
- Printed circuit board technology

WIRING: T568B and T568A

NOTE: 110 connector tool is required for termination.



48 PORT FRONT



48 PORT BACK 110 IDC



PART NO.

DESCRIPTION

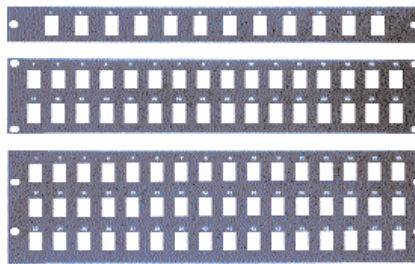
HEIGHT

Dimensions Width 19" (48.26 cm)

AT55A-PNL-24	24 Port Cat 5e 110 Wired to 568A	1.75" (4.45 cm)
AT55A-PNL-48	48 Port Cat 5e 110 Wired to 568A	3.50" (8.89 cm)
AT55A-PNL-96	96 Port Cat 5e 110 Wired to 568A	7.00" (17.78 cm)
AT55B-PNL-12	12 Port Cat 5e 110 Wired to 568B	1.75" (4.45 cm)
AT55B-PNL-24	24 Port Cat 5e 110 Wired to 568B	1.75" (4.45 cm)
AT55B-PNL-32	32 Port Cat 5e 110 Wired to 568B	3.50" (8.89 cm)
AT55B-PNL-48	48 Port Cat 5e 110 Wired to 568B	3.50" (8.89 cm)
AT55B-PNL-64	64 Port Cat 5e 110 Wired to 568B	7.00" (17.78 cm)
AT55B-PNL-96	96 Port Cat 5e 110 Wired to 568B	7.00" (17.78 cm)

VERSATAP PATCH PANELS

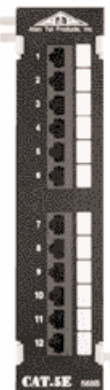
Designed for use with all Allen Tel Versatap Cat. 3, Cat. 5e and Cat. 6 Jacks and the AT55C-00 Coupler, COAX and TV modules. This design allows full flexibility when formulating your LANS, Cabling Systems, Data Processing Networks or Telecommunications Panels. These 19 inch (482.6mm) Panels are constructed of 16 gauge sheet metal and finished in textured black baked enamel.



PART NO.

HEIGHT

ATPNL-12, 12 Port	1.7" (43.7mm)
ATPNL-16, 16 Port	1.7" (43.7mm)
ATPNL-24, 24 Port	3.50" (88.9mm)
ATPNL-32, 32 Port	3.50" (88.9mm)
ATPNL-48, 48 Port	5.25" (133.3mm)
ATPNL-64, 64 Port	8.75" (222.3mm)
ATPNL-96, 96 Port	10.5" (266.7mm)
ATPNL-128, 128 Port	14" (355.6mm)



CATEGORY 5e PATCH PANELS E/W GB89D MOUNTING BRACKET

The AT55A and B-12PT 12 Port Cat. 5e Patch Panels are designed for small Voice and Data Cross Connect Installations. They are e/w 2-6 port CAT. 5e non-keyed Jack Modules and mounted on a GB89D Mounting Bracket.



PART NO.

DESCRIPTION

AT55A-12PT	12 Port Cat 5e 110 Wired to 568A e/w GB89D mounting bracket
AT55B-12PT	12 Port Cat 5e 110 Wired to 568B e/w GB89D mounting bracket