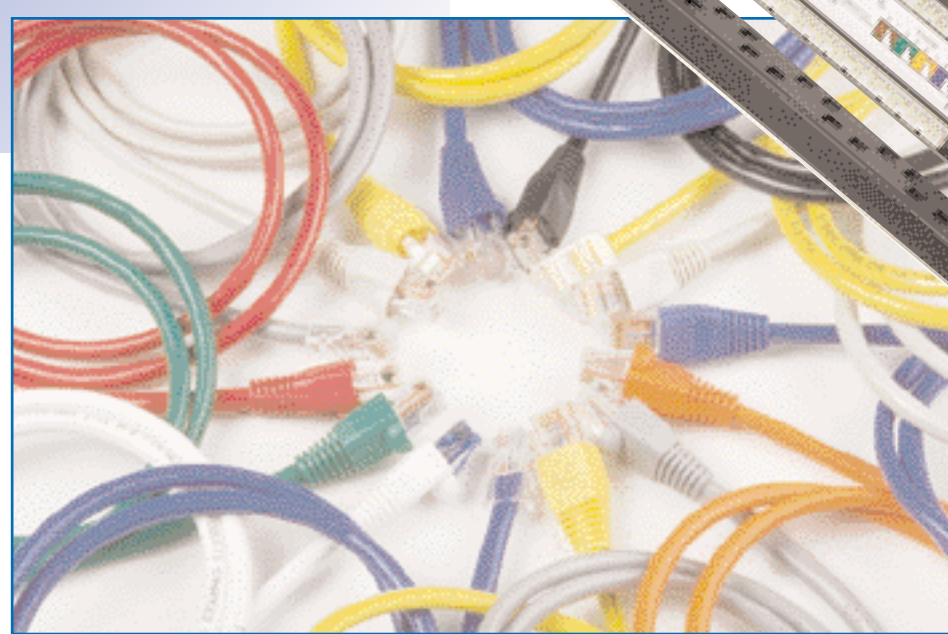
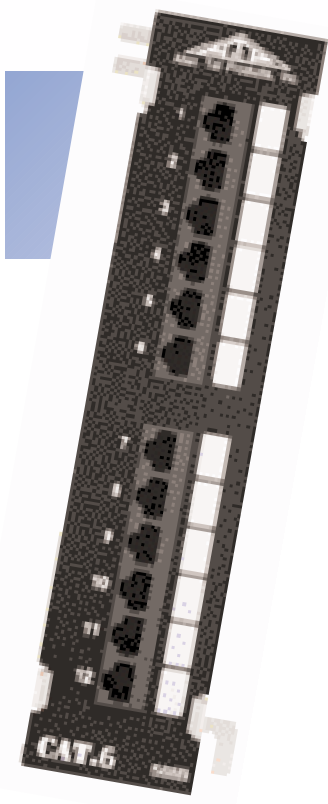
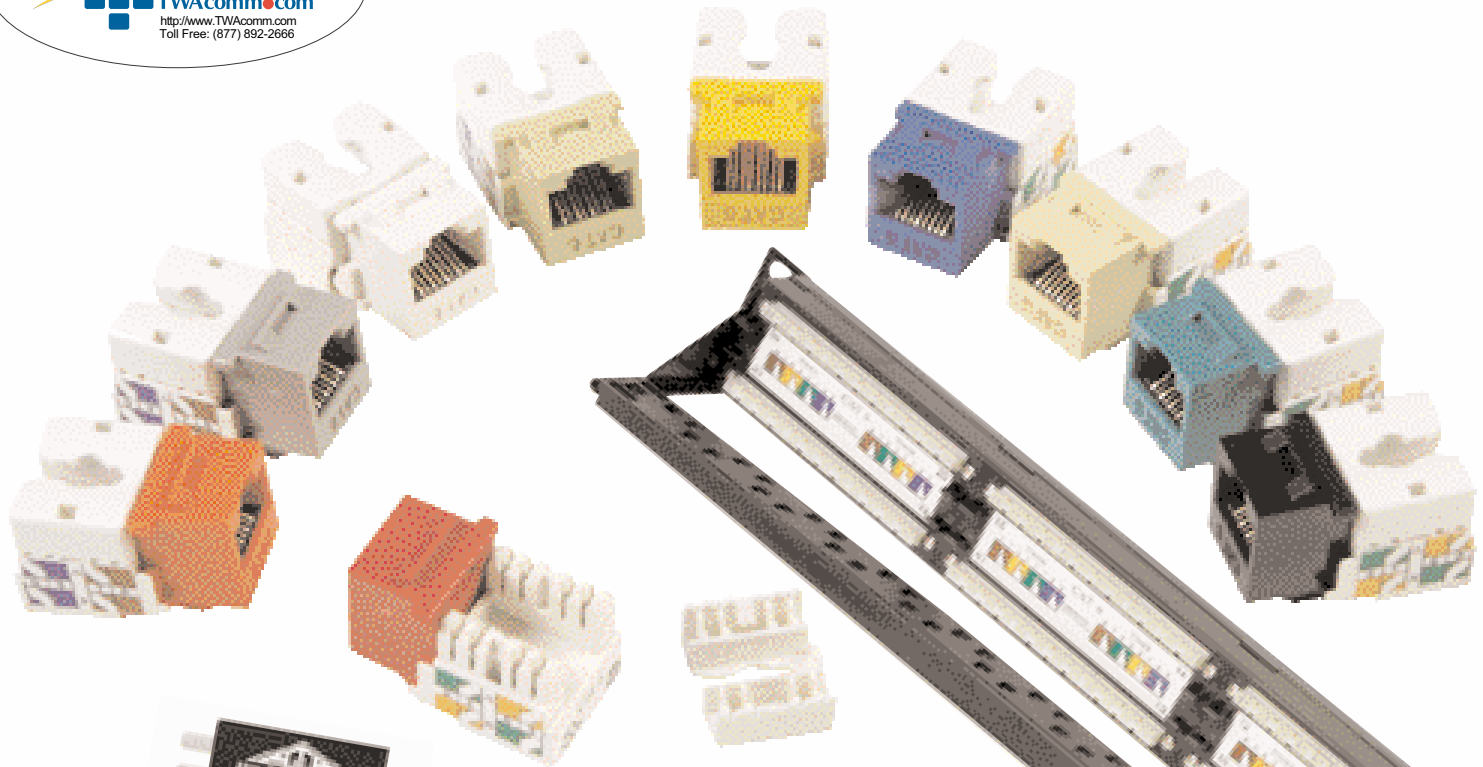




# AllenTel Products



# VIP 2000 CATEGORY 6 SOLUTIONS





# CATEGORY 6



## Allen Tel Cat 6 Series Products

Category 6 Series is designed to meet Graybar's VIP 2000 requirements, exceeding TIA EIA Category 6 Specifications. Allen Tel Cat 6 will maintain the transmission performance with a choice of VIP 2000 approved cable manufacturers.

### Allen Tel Cat 6 Series Features

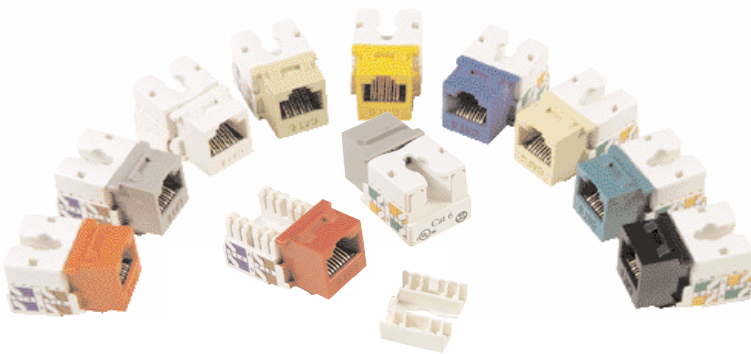
- Independent Performance Certification through Graybar's VIP 2000 Program
- Meets or exceeds proposed Category 6 channel ACR
- Faster Termination Time
- Choice of Color Jacks
- Interchangeable Components, Facilitating Future Changes and Upgrades
- Balanced System Design
- AT66 Series Jacks wired to either 568A or 568B
- AT66 Series Patch Panel wired to either 568A or 568B and are equipped with a Wire Management Bracket.

### Allen Tel Cat 6 Jacks

The AT66 Cat 6 Series Jacks will mount into all of Allen Tel's existing Versatap Face Plates and Housings including the AT60 and AT70 series. When you select to install the Allen Tel Cat 6 System, with the Patch Panel, Patch Cords and Jacks, you will insure your network investment for years to come.

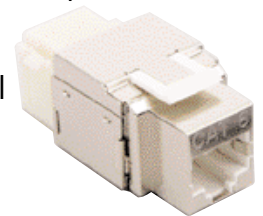
### ORDERING INFORMATION AT66 SERIES JACKS PART NO. DESCRIPTION

<b>AT66-00</b>	Cat 6 Jack 568A or 568B	Black
<b>AT66-04</b>	Cat 6 Jack 568A or 568B	Yellow
<b>AT66-05</b>	Cat 6 Jack 568A or 568B	Green
<b>AT66-09</b>	Cat 6 Jack 568A or 568B	Ivory
<b>AT66-14</b>	Cat 6 Jack 568A or 568B	Grey
<b>AT66-15</b>	Cat 6 Jack 568A or 568B	White
<b>AT66-16</b>	Cat 6 Jack 568A or 568B	Orange
<b>AT66-20</b>	Cat 6 Jack 568A or 568B	Blue
<b>AT66-47</b>	Cat 6 Jack 568A or 568B	Red
<b>AT66-52</b>	Cat 6 Jack 568A or 568B	Electrical Ivory



### AT66SH Cat 6 Fully Shielded Jack

The AT66SH series jack provides the highest isolation for EMI, RFI emission. The jack will accept 22 thru 26 AWG solid or stranded STP cables and complies with TIA 568A and TIA 568B wiring. The AT66SH fits all versatap products except the AT33 and AT44 surface jck housings. Order Part No. AT66SH



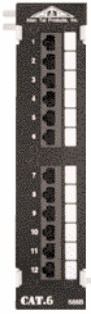
Channel Comparison	Proposed Cat. 6	VIP 2000
Attenuation (100 MHz)	20.9 db	20.5 db
PS-Near End Cross-Talk (NEXT) (at 100 MHz)	37.1 db	40.6 db
Power Sum ACR (at 100 MHz)	16.2 db	20.1 db
Return Loss	12.0 db	14.0 db
Independently tested	No	Yes
Positive PS-ACR at 250 MHz	No	Yes



Sold by:



# CATEGORY 6

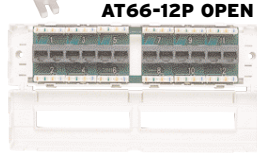


## CATEGORY 6 PATCH PANELS E/W GB89D MOUNTING BRACKET

The AT66-12PT 12 Port Cat. 6 Patch Panels are designed for small Voice and Data Cross Connect Installations. They are e/w 2-6 port CAT. 6 non-keyed Jack Modules and mounted on a GB89D Mounting Bracket.

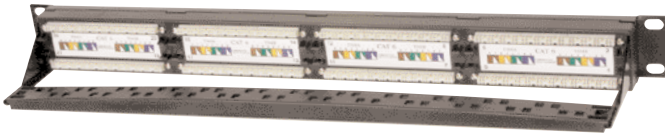


AT66-12P e/w GB89D BRACKET



## CATEGORY 6 PATCH BOXES, 6 AND 12 PORT

Allen Tel's new Cat 6 series Patch Boxes have all the same features as our Cat 5e Patch Boxes. (See page 7)



## Allen Tel Cat 6 Patch Panels

Allen Tel's Category 6 Patch Panels are equipped with a new Wire Management Bracket that easily snaps into position. Designed to Graybar's VIP 2000 requirements, these panels are wired to either 568A or 568B.

### FEATURES

- Exceeds category 6 requirements
- Identification strips
- Wire management on rear of panel
- Wired to either 568A or 568B
- Mounting hardware and tie down strips included
- Wire Management Bracket included

### ORDERING INFORMATION

#### AT66 SERIES PATCH PANELS & PATCH BOXES

PART NO.	DESCRIPTION - UNIVERSAL WIRING
AT66-PNL-12	Cat 6 Patch Panel 12 Port 568 A or B Wiring
AT66-PNL-24	Cat 6 Patch Panel 24 Port 568 A or B Wiring
AT66-PNL-48	Cat 6 Patch Panel 48 Port 568 A or B Wiring
AT66-PNL-96	Cat 6 Patch Panel 96 Port 568 A or B Wiring
AT66-6P	Cat 6 Patch Box 6 Port Surface Mount
AT66-12P	Cat 6 Patch Box 12 Port Surface Mount e/w CB89D Bracket
AT66-12PT	Cat 6 Patch Panel 12 Port e/w CB89D Bracket

### ORDERING INFORMATION

#### AT16 SERIES PATCH CORDS

PART NO.	DESCRIPTION	LENGTH
AT1601-XX	Cat 6 Patch Cord	1 Ft.
AT1602-XX	Cat 6 Patch Cord	2 Ft.
AT1603-XX	Cat 6 Patch Cord	3 Ft.
AT1604-XX	Cat 6 Patch Cord	4 Ft.
AT1605-XX	Cat 6 Patch Cord	5 Ft.
AT1607-XX	Cat 6 Patch Cord	7 Ft.
AT1610-XX	Cat 6 Patch Cord	10 Ft.
AT1614-XX	Cat 6 Patch Cord	14 Ft.
AT1615-XX	Cat 6 Patch Cord	15 Ft.
AT1618-XX	Cat 6 Patch Cord	18 Ft.
AT1620-XX	Cat 6 Patch Cord	20 Ft.
AT1625-XX	Cat 6 Patch Cord	25 Ft.
AT1650-XX	Cat 6 Patch Cord	50 Ft.
AT16100-XX	Cat 6 Patch Cord	100 Ft.

XX: Color (WH) White, (YL) Yellow, (BU) Blue, (RD) Red, (GY) Grey, (I) Ivory, (BK) Black, (GN) Green, (OR) Orange

Add LB to Part Number for Less Boot.

Example: AT1603-BULB = Cat6 3 ft Blue Cord Less Boot

