

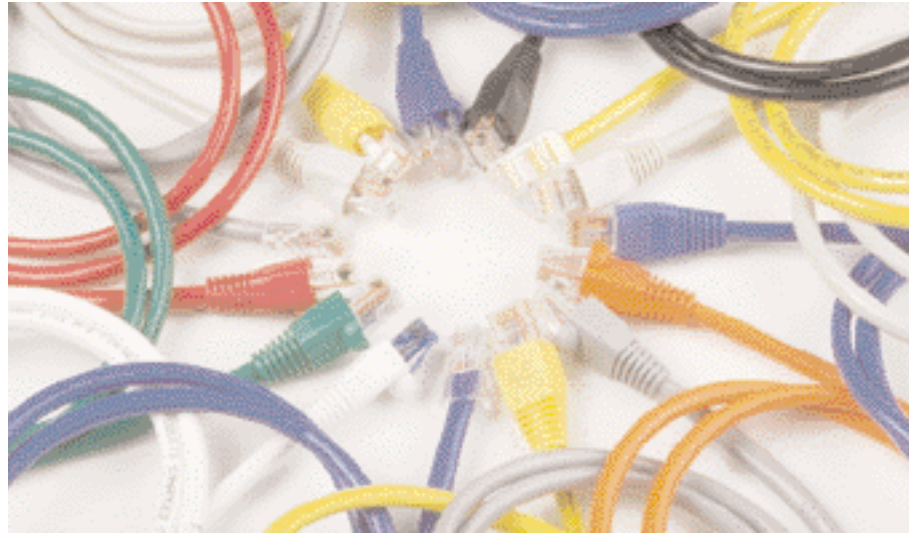


# VERSATAP MODULAR 5e V.I.P. PATCH CORDS



## PATCH CORDS HIGH POWERED PERFORMANCE CATEGORY 5e ENHANCED PATCH CORDS WIRED TO TIA-568A

Introducing Allen Tel Products Enhanced Category 5EV Patch cords to ensure optimum headroom for performance beyond category 5e. Patch Cords are a vital link in any network, an inferior device can bring your system below category 5e levels. Allen Tel's next generation of enhanced Patch Cords eliminates that fear and allows the system to perform to its ultimate potential. Our enhanced Category 5EV Patch Cord achieves more headroom with significantly less crosstalk.



### VIP PATCH CORDS PART NO.      LENGTH

<b>AT1501EV-XX</b>	1 Ft. (No Boot)
<b>AT1502EV-XX</b>	2 Ft.
<b>AT1503EV-XX</b>	3 Ft.
<b>AT1505EV-XX</b>	5 Ft.
<b>AT1507EV-XX</b>	7 Ft.
<b>AT1510EV-XX</b>	10 Ft.
<b>AT1514EV-XX</b>	14 Ft.
<b>AT1518EV-XX</b>	18 Ft.
<b>AT1525EV-XX</b>	25 Ft.

XX = Color  
 WH - White  
 YL - Yellow  
 BU - Blue  
 RD - Red  
 GY - Grey  
 I - Ivory  
 BK - Black  
 GN - Green  
 OR - Orange

Special lengths and wiring are available upon request.

Available less boot-add "LB" to part number.



Channel Comparison	5e	VIP 1000
Attenuation*	24.0db	22.8db
PS-Near End Cross Talk (Next)*	27.1db	30.5db
Power Sum ACR*	3.1db	7.7db
Maximum Frequency	100MHz	155MHz
Independently Tested	No	Yes
Positive PS-ACR at 155MHz	No	Yes

\*at 100MHz

### CROSSOVER CABLE

Allen Tel offers a red ethernet crossover cable. These cables are used on an ethernet system when you connect two like devices. This cable is also commonly known as "swap cable."

#### CONSTRUCTION

Red Category 5e UTP cable with yellow boots.

#### ORDERING INFORMATION

DESCRIPTION: Red Ethernet Crossover Cable.



### PART NO.      LENGTH

<b>AT1503-REC</b>	3 Ft.	Special lengths and colors available from the factory
<b>AT1505-REC</b>	5 Ft.	
<b>AT1507-REC</b>	7 Ft.	
<b>AT1510-REC</b>	10 Ft.	
<b>AT1514-REC</b>	14 Ft.	
<b>AT1518-REC</b>	18 Ft.	
<b>AT1525-REC</b>	25 Ft.	