



VERSATAP MODULAR SYSTEM



CATEGORY 3 MODULAR JACK MODULES FOR 22/24 AWG WIRE



Electrical Certification and Specifications:

Meets FCC Part 68, U.L. Listed, EIA/TIA-568 Faceplates and Jack Housings: High impact, self extinguishing plastic, Rated UL94V-0 Modular Jacks. Contacts: Phosphor Bronze Plated with 50 micro-inches of gold over 100 micro-inches of nickel. Connectors: IDC-22/24 AWG insulated wire. Data Rate: Compatible with 10 Mbps IEEE 802.3 (10 Base T) and 16 Mbps Token Ring Applications.

Sold by:



**NEW!
COLORS**

Jack, 6 Position, 4 Conductor

PART NO.	COLOR
AT34-00	BLACK
AT34-09	IVORY
AT34-14	GREY
AT34-15	WHITE
AT34-16	ORANGE
AT34-20	BLUE
AT34-47	RED

Jack, 6 Position, 6 Conductor-DEC (MMJ)

PART NO.	COLOR
AT35-09	IVORY
AT35-14	GREY
AT35-15	WHITE

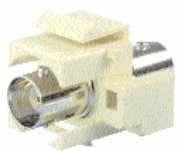


Jack, 6 Position, 6 Conductor

PART NO.	COLOR
AT36-00	BLACK
AT36-04	YELLOW
AT36-05	GREEN
AT36-09	IVORY
AT36-14	GREY
AT36-15	WHITE
AT36-16	ORANGE
AT36-20	BLUE
AT36-47	RED

Jack, 8 Position, 8 Conductor

PART NO.	COLOR
AT38-00	BLACK
AT38-04	YELLOW
AT38-05	GREEN
AT38-09	IVORY
AT38-14	GREY
AT38-15	WHITE
AT38-16	ORANGE
AT38-20	BLUE



COAX CONNECTOR

(Insert e/w Fem. BNC to Fem. BNC Conn.) Use with RG58/RG59/RG62

AT32BB-XX



COAX CONNECTOR

(Insert e/w Fem. Threaded F-81 Conn.) Use with RG58/RG59/RG62

AT32F-XX



FIBER COUPLER

Multi-Mode, ST Type

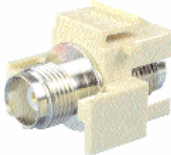
AT31ST



COAX CONNECTOR

(Insert e/w Fem. BNC to 2 pce. Crimp Conn.) Use with RG59/RG62

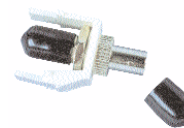
AT32BC-XX



COAX CONNECTOR

(Insert e/w Fem. TNC to Fem. TNC Conn.) Use with RG58/RG59/RG62

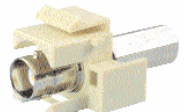
AT32TF-XX



INSERT

AT31FO Insert e/w ST Type Multi-Mode Fiber Coupler

AT31ST-XX



COAX CONNECTOR

(Insert e/w Fem. BNC to Twist-on Jack) Use with RG59/RG62

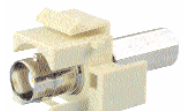
AT32BT-XX



INSERT

(Insert Only Accepts Fiber Optic Connector requiring a 3/8" hole)

AT31FO-XX



COAX CONNECTOR

(Insert e/w Fem. BNC to Twist-on Jack) Use with RG58

AT32BT58-XX



INSERT

(Blank for Filling Unused Positions)

AT31-XX

(Also available in (52) El. Ivory)

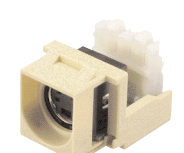
AT40 VERSATAP I.D. LABELS

FAX	VOICE
MODEM	VOICE
LINE 1	VOICE
LINE 2	LAN
LINE 3	DATA
LINE 4	DATA 1
LINE 5	DATA 2
LINE 6	DATA 3

I.D. Labels

Convenient adhesive backed labels for applying to Versatap Faceplates to identify circuit type assigned to specific Versatap ports. Also ideal for other Allen Tel Data Voice products.

AT40



VIDEO CONNECTOR

With 110 Termination

AT32VD-XX

(Not available in Gray)

NEW!

COLOR KEY: XX Denotes color (09) Ivory; (14) Gray; (15) White