



GAI-TRONICS CORPORATION

Model 12573-001

Spring Kit

Kit Overview

This kit is designed for use on the following GAI-Tronics Telephone Models: 256, 256C, 257, and 258.

Parts included in this kit:

- (1) Hinge/Left/Pre-drilled
- (1) Hinge/Right/Pre-drilled
- (1) Spring
- (1) Spring Pin

Tools required to install this kit:

- (1) 3/16" Allen Wrench

Installation of Kit

1. Use 3/16" Allen Wrench to remove hinges from enclosure body. These hinges,(female), will not be reinstalled. Male hinges remain on door, temporarily.
2. On a flat surface, loosely assemble Spring Kit parts making sure that new female hinges (with predrilled pin hole), the spring, and spring pin are properly aligned and positioned as shown in Figure 1.
3. Attach new lower female hinge to enclosure with (2) HSCS screws and (2) washers. Insert spring assembly (spring on pin) into the pin hole in the hinge, making sure that end legs of the spring rest against the side of the enclosure body, and that the closed section of the spring rests over the front edge of the enclosure opening. See Figure 2.

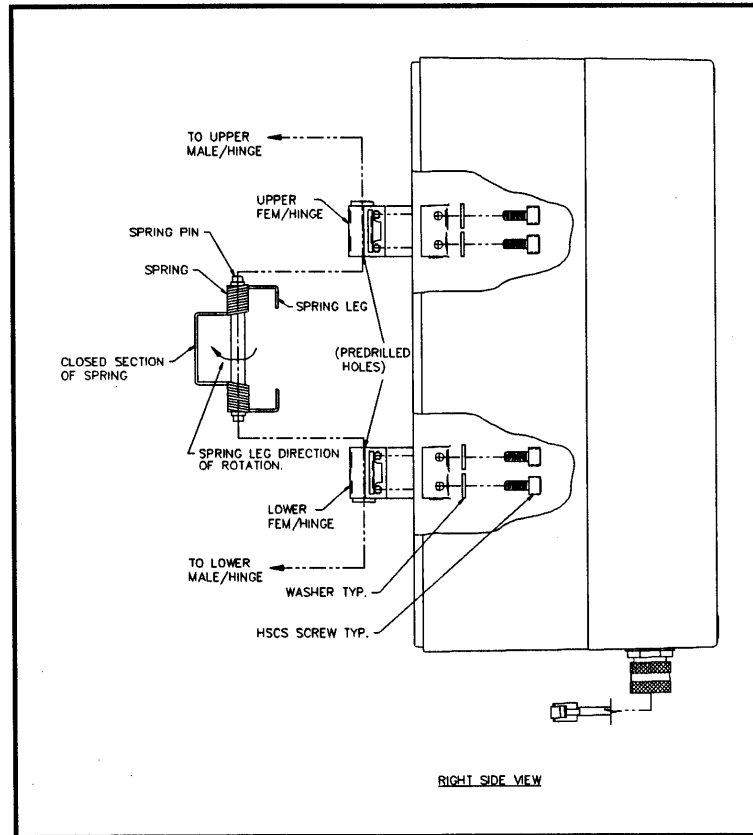


Figure 1.

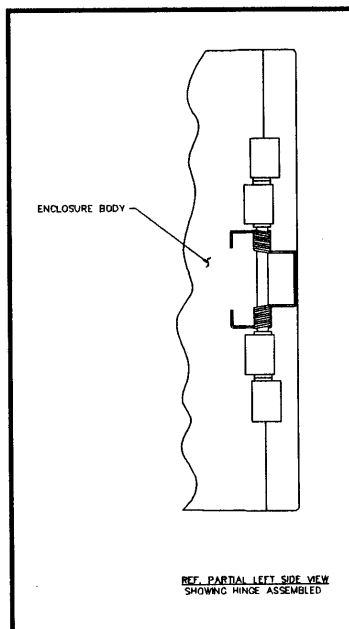


Figure 2.

4. Place new upper female hinge on the spring pin and attach to enclosure with (2) HSCS screws and (2) washers. The spring should come under slight tension as the hinge is drawn into the enclosure body with the attachment screws. Tighten screws.
5. Remove bottom male hinge from enclosure door leaving top male hinge attached. See Figure 3.
6. Place door over enclosure opening, approximately 2" higher than normal to allow clearance for male hinge pin. With the door edge against the closed center section of spring, slide door towards spring increasing tension until the door seats onto enclosure.
7. Open door slightly, (to allow latch clearance), and slide door downward to engage male hinge pin. Close and latch door.
8. Position bottom male hinge with hinge pin engaged. Open door partially. Reach in with hand and engage attachment screw several threads deep. When screw is properly started, open door fully and complete the hinge attachment with (2) HSCS screws and (2) washers.

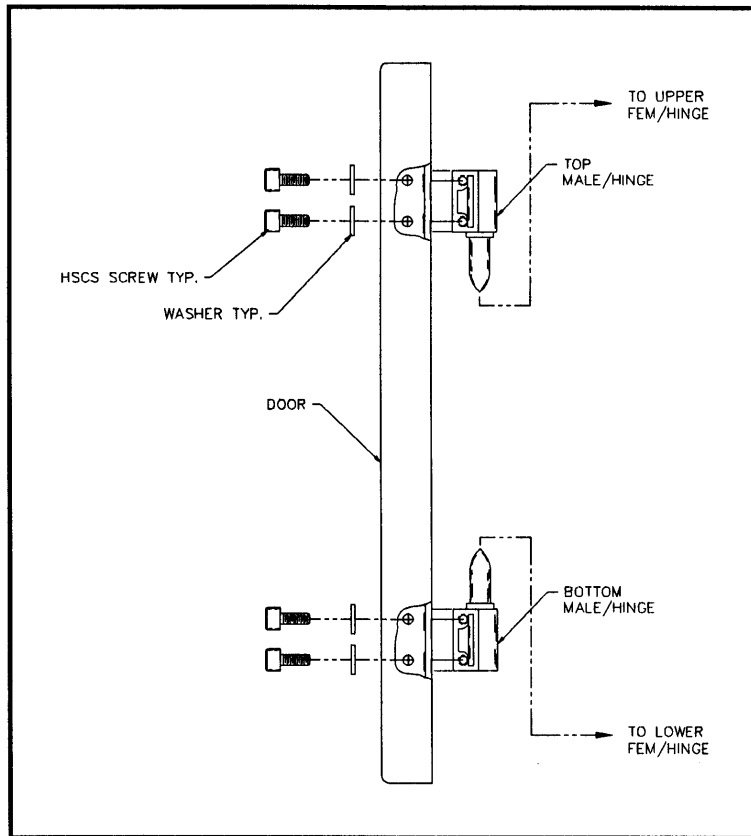


Figure 3.

9. Check all fasteners for tightness.