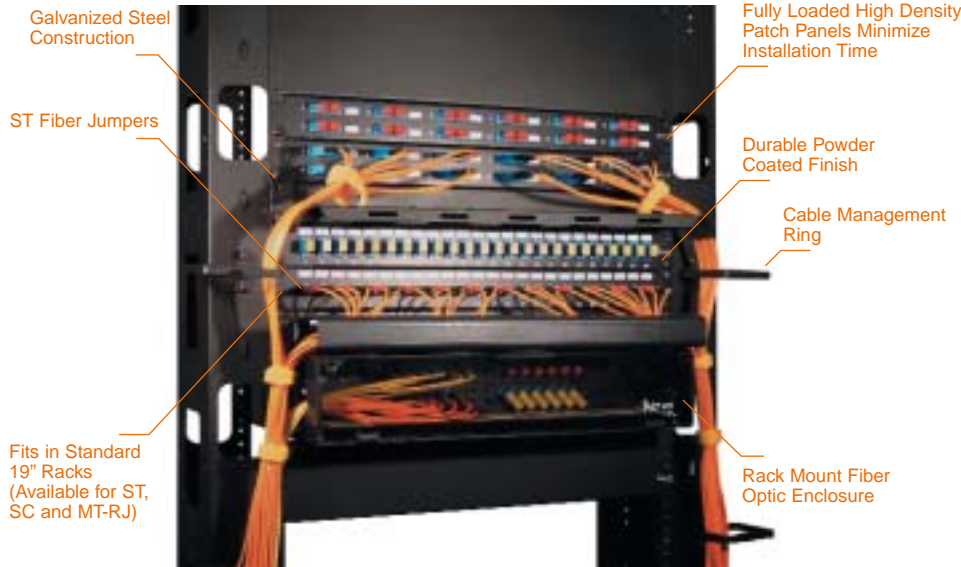




Fiber Optic Patch Panels

Installation Benefits

- Maximize Space with High Density Configurations of 24 Ports per Rack Mount Space
- Provides Installation Flexibility Needed in Today's Rapidly Changing Technological Environment
- Available in All Popular Styles of SC, ST and MT-RJ Adapters
- Matches and Blends with Other Rack Mounted Products



ICFORPPAC1

Fiber Optic Patch Panel

Integrated with 12 SC fiber adapters. Includes #12 rack screws.

PART NUMBER	DESCRIPTION
ICFORPPAC1	12-Duplex SC, Metal, 1 RMS
ICFORPPAC2	12-Duplex SC, Ceramic, 1 RMS



ICFORPPAR1

Fiber Optic Patch Panel

Integrated with 12 SC to ST fiber adapters. Includes #12 rack screws.

PART NUMBER	DESCRIPTION
ICFORPPAR1	12-Duplex SC/ST, Metal, 1 RMS
ICFORPPAR2	12-Duplex SC/ST, Ceramic, 1 RMS



ICFORPPAS1

Fiber Optic Patch Panel

Integrated with 24 SC fiber adapters. Includes #12 rack screws.

PART NUMBER	DESCRIPTION
ICFORPPAS1	24-Simplex SC, Metal, 1 RMS
ICFORPPAS2	24-Simplex SC, Ceramic, 1 RMS



ICFORPPAM1

Fiber Optic Patch Panel

Integrated with Small Form Factor (SFF) 24 MT-RJ fiber adapters. Includes #12 rack screws.

PART NUMBER	DESCRIPTION
ICFORPPAM1	24-Duplex MT-RJ



ICFORPPAT1

Fiber Optic Patch Panel

Integrated with 24 ST fiber adapters. Includes #12 rack screws.

PART NUMBER	DESCRIPTION
ICFORPPAT1	24-Simplex ST, Metal, 1 RMS
ICFORPPAT2	24-Simplex ST, Ceramic, 1 RMS



ICFORPP1RM

Fiber Optic Blank Patch Panel

Panel is designed to accommodate fiber optic adapter panels, see E-6.

PART NUMBER	DESCRIPTION
ICFORPP1RM	3-Panel, 1 RMS
ICFORPP2RM	6-Panel, 2 RMS



ICFORPP2RM