



Certify it.  
Diagnose it.  
Document it.

**With the first certifying OTDR designed for LAN installers.**

*The use of fiber in premises networks is continually growing – and so are the requirements for testing and certifying it. More and more, LAN cable installers will win or lose business based on their ability to provide a whole new level of required certification, documentation and diagnostics. And no solution hands you a more complete, competitive edge than the **OptiFiber® Certifying OTDR** from Fluke Networks. It's the first tool specifically designed to keep LAN installers and network owners on top of the latest requirements for testing and certifying fiber.*

**OptiFiber®**  
Certifying OTDR

Bringing Network SuperVision™  
to Fiber LANs

## Take your fiber testing and your business to a new level

The OptiFiber® Certifying OTDR gives you the visibility into fiber networks to quickly isolate faults, restore network performance and meet the emerging requirements for fiber testing and certification.

- **Get a complete picture of the quality of your LAN.** OptiFiber brings together all the critical information you need – on screen. On your PC. On printed reports you can give to your customers.
- **Take the complexity out of OTDR testing** with automated trace and event analysis and simple link diagramming that anyone can understand.
- **Boost productivity** with automated insertion loss testing and an intuitive interface that's fast and easy-to-use.
- **Troubleshoot connections** with a 250X/400X fiber endface microscope.
- **Measure optical power** directly to verify source and link performance.
- **Streamline data management and create impressive reports** that bring together all key test data – quickly, easily and completely.
- **Work comfortably in tight spaces** with one of the smallest, lightest micro OTDRs available.
- **Protect your investment** by purchasing the capabilities you need today and adding new modules as your testing needs and the technology evolves.

## Certify to new customer specs and industry standards

Troubleshooting and certifying mission-critical fiber networks makes special demands on cabling professionals – and their tools. Only the OptiFiber Certifying OTDR from Fluke Networks is engineered specifically to meet these demands. It integrates loss/length certification, ChannelMap™, OTDR analysis and video endface inspection in a single, easy-to-use tool.

## Increase productivity from day one

OptiFiber makes it as easy to test fiber as copper – with an intuitive interface and a handheld footprint that mimics our user-friendly copper-based certification solutions. Now troubleshooting fiber and testing to the latest industry standards and customer specs is as quick and easy as pushing a button. It's enough to make a cable installer smile.

## See all LAN events – with a short dead-zone

There's only one way to see events in short fiber runs – and OptiFiber has it. It's the first OTDR designed for LAN fiber networks with short multimode or singlemode fiber links. Advanced optoelectronics accurately pinpoint multiple events as close as 1 meter apart. No overlooked faults; no wasted time and money trying to zero in on faults that elude the long event dead-zones of other OTDRs.

## Count on a tool that's field-tough, user-friendly

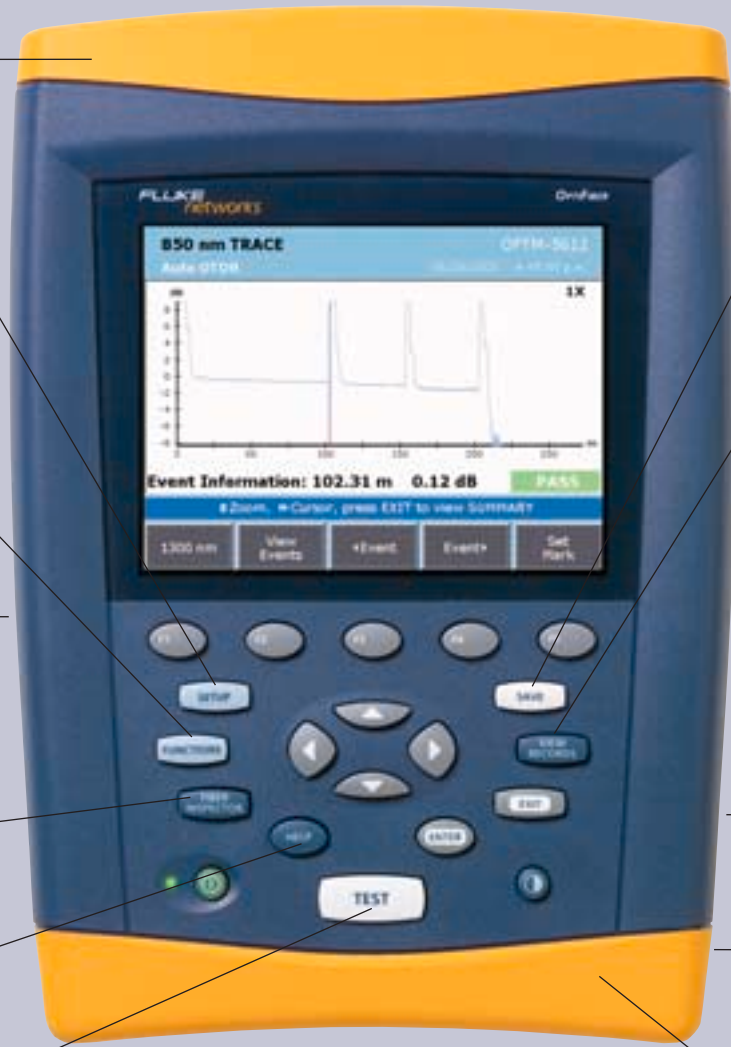
OptiFiber's compact size and light weight are the ideal fit for your typical work environment: tight spaces and crowded distribution closets. It's easy to use; easy to navigate. And its modular design accepts optional test modules that can be swapped without tools in a matter of seconds. So it's easy to reconfigure your test set anytime. Anywhere. And, like other Fluke Networks' testers, OptiFiber is built to withstand the harshest conditions of everyday field use.

## The OptiFiber Certifying OTDR

Working closely with premise cable installers, cable and connector companies, network owners, and standards organizations, we designed a new product to meet their needs. It's a natural extension of our leading-edge solutions for copper cable installers and fiber network professionals. And it's one more way Fluke Networks SuperVision™ helps you look into the future and leverage your business opportunities.



# Window of opportunity: Enhanced Fiber LAN visibility



**Lightweight**  
Only 4.5 lbs. (1.9 kg) including battery and test module

**Setup**  
Fast, easy configuration for new jobs and test requirements. Select from predefined lists or create custom limits.

**Functions**  
Quickly view and select among various functions

**MMC Card**  
Bring test results back to the office for instant data hand-off while the tester stays on the job

**FiberInspector**  
View magnified fiber endface images

**Help**  
A complete guide at the touch of a button

**Test**  
Complete fiber testing with the push of a button

**Integrated Stand**  
Sturdy stand makes tabletop operation easy

**Save**  
Keep all test results for a single fiber in one common record

**View Records**  
Retrieve test results easily – even when in the field; sort by ID, job or data

**Keyboard Port**  
Speed up data entry with the optional keyboard capability

**USB Port**  
For lightning fast data exchange with a PC

**RS232 Port**  
Connect to a PC for data exchange

**Battery**  
Test a full 8 hours between charges with the Li Ion battery

**Portable**  
Small footprint for easy use in the field. 10.6" (26.9 cm) high x 7.5" (19.1 cm) wide x 2.5" (6.4 cm) deep

The screen displays: **850 nm TRACE**, **OPTIM-5612**, **Auto OTDR**, **Event Information: 102.31 m 0.12 dB PASS**, and buttons for **1300 nm**, **View Events**, **Event**, **Event**, **Set Mark**, **TEST**, **HELP**, **ENTER**, **EXIT**, **SWAP**, **VIEW RECORDS**, **FUNCTIONS**, **SETUP**, and **TEST**.



**OptiFiber Smart Remote option**  
for loss/length certification

# OptiFiber® Certifying OTDR packages for today's every need. And tomorrow's.

No need to reinvent the wheel every time your test and certification requirements change. OptiFiber's modular design can be customized to your current needs – and cost-effectively expanded as your needs change and new modules are released to keep you on top of the industry. OptiFiber is always the best investment you can make. Choose from a family of OptiFiber packages – or create your own.

## OptiFiber OTDR Model #OF-500-01

The basic OTDR package is perfect for LAN multimode fiber networks. Short event deadzones provide enhanced vision into short-haul, connection-rich networks. Accepts a variety of powerful options and accessories. See table below for complete package content

## OptiFiber Advanced OTDR Model #OF-500-02

The advanced package incorporates a built-in optical power meter for use with a multimode or singlemode far end source. See table below for complete package content.

## OptiFiber SR Certifying OTDR Model #OF-500-15

The Smart Remote package adds dual-wavelength two-fiber insertion loss/length certification of multimode fiber, with the inclusion of a multimode smart remote unit for the far end of a link. Also included is a 250X/400X video microscope for inspecting fiber endfaces. See table below for complete package content.

## OptiFiber Certifying OTDR Solution Model #OF-500-20

This package replaces the Smart Remote in the OF-500-15 with a second OptiFiber and a multimode module. The advantage of this substitution is that you can do OTDR testing and end-face image capture at both ends of the link for the ultimate in fiber certification and troubleshooting. See table below for complete package details.

## OptiFiber Pro Inspector LL OTDR Model #OF-500-35

This is the perfect choice for professionals needing to test and troubleshoot multimode and single-mode premise fiber networks. It provides OTDR trace and event analysis and dual-magnification fiber endface video inspection for both multimode and singlemode fibers. This package is also equipped with interfaces that provide a connection with optional OptiFiber smart remote units when automated dual-wavelength loss/length testing is required. All these results can be tied to one record and presented in one report – an impressive, professional way to document compliance to customer requirements and industry standards. See table below for complete package details.

	OptiFiber Certifying OTDR Packages				
	OF-500-01	OF-500-02	OF-500-15	OF-500-20	OF-500-35
OptiFiber Mainframe OF-500	•	•	•	•x2	•
Multimode OTDR Module OFTM-5610	•				
Multimode OTDR with Power Meter Module OFTM-5611		•			
Multimode OTDR with Power Meter & Loss/Length Module OFTM-5612			•	•x2	•
Singlemode OTDR Module OFTM-5630	option	option	option	option	
Singlemode OTDR with Power Meter Module OFTM-5631	option	option	option	option	
Singlemode OTDR with Power Meter & Loss/Length Module OFTM-5632	option	option	option	option	•
Smart Remote with Multimode Module Option OFSR-MMREM	option	option	•		option
Singlemode Module for Smart Remote OFSR-SFM	option	option	option		option
FiberInspector Pro OFTM-5352	option	option	•	•x2	•
Soft Protective Case OFCC-SCASE	option	•	•	•x2	•
Hard Carrying Case OFCC-HCASE	option	option	•	•x2	•
MMC Reader	option	option	•	•	•
LinkWare PC Software	•	•	•	•	•

## See what others are missing...

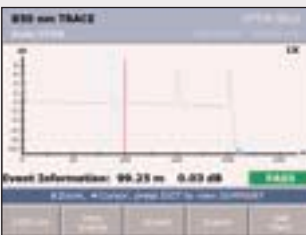
You need a complete picture of the fiber plant to ensure the performance of mission-critical LANs. OptiFiber gives you more ways to look at fiber – and makes it easy to bring together the results in one complete, professional report.

### ChannelMap™



Troubleshooting starts here. See a diagram of the channel, including patch cords. Check that the link is patched all the way across the campus, and identify how many connectors are in a link.

### OTDR



View the full profile of the fiber link. Zoom in for a closer look at events. Move quickly to areas of interest. Identify suspect optical events such as high-loss connections.

### Loss/Length Certification



PASS/FAIL insertion loss analysis makes it easy to see whether the fiber is good – and presents the data in a clear, easy-to-interpret format.

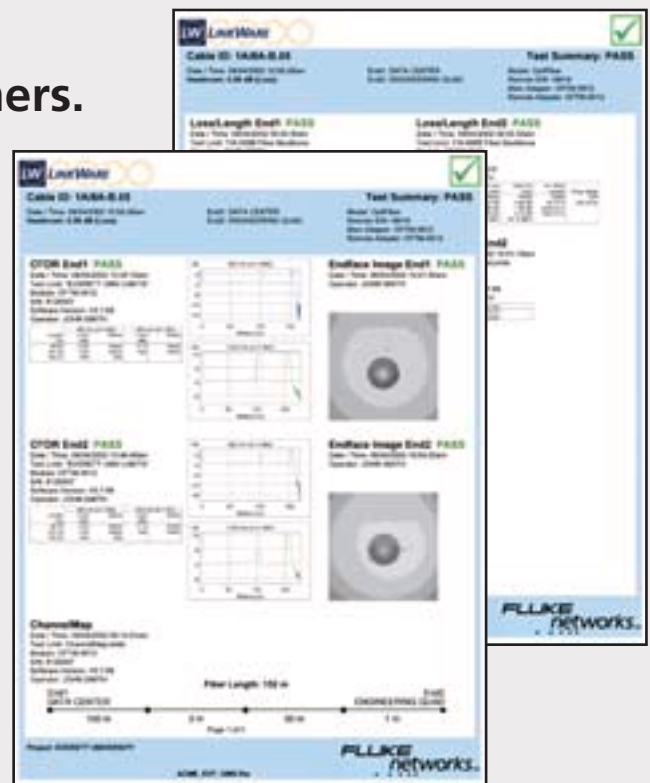
### FiberInspector™ Pro



The fiber inspection camera provides a high-resolution 250X/400X endface image of the fiber connector. Grade the image. Save the image – and show it to your customer.

## ...and share it with your customers.

Here's where it all comes together in the most professional, accurate view of the network. LinkWare™ PC software makes it easy to manage and print the rich test data, captured as only OptiFiber can, to ensure the quality of network installation and performance. Instantly access and organize your results and create professional reports that meet new certification demands, impress your customers and give you a competitive edge. Merge results for the entire network with the DTX Series, DSP-4000 Series or OMNIScanner Series of cable analyzers.



## Here's what cabling professionals are saying about OptiFiber® Certifying OTDR:

"More and more high-speed fiber installations are requiring extensive testing beyond loss and length for certification before turning over the cable plant. We are finding that we need to measure insertion loss and deliver an OTDR trace to provide a complete picture of the network. OptiFiber combines both these capabilities in one instrument. Allowing me to give my customers a comprehensive view of their network with all the test results captured in one professional report."

### **Fiber Optics Manager**

"We use DSP-4000, so the biggest advantage to us is that we are used to the basic operation of the DSP-4000, and the new OptiFiber follows suit. Other OTDRs are very complicated, but my technicians would find the OptiFiber easy-to-use without being computer literate."

### **Field Supervisor**

"This is by far the most user-friendly OTDR. The camera option was a real plus as you could visually see the endface of the connector without unplugging the cable out of the cabinet."

### **Quality Assurance Inspector**

"Since we are one of the largest network companies that installs fiber, testing is key. I appreciate the size of the new OptiFiber because it would probably replace two or three other pieces of equipment. The USB with 8 megs on the memory card is a real big plus since it replaces the limited memory of a floppy disk, which I was previously using. And, in our business, it's all about the test results."

### **Project Manager**

"This product was phenomenal and beat out other OTDRs because of the ease-of-use and the short one-meter dead zone. The fact that it is also lightweight makes it that much more attractive for field testing."

### **Communications Tech**

"The OptiFiber will be of great value in large to medium premise environments—such as campus and metro applications—because the fiber is shorter than in long haul applications. Since most customers require more information than a power measurement, the OptiFiber would replace that unit in the campus environment. The most beneficial feature to me is the extensive and easy-to-interpret visual graphics."

### **Senior Estimator**



For a firsthand look at the OptiFiber Certifying OTDR in action, visit our Web site at [www.flukenetworks.com/optifiber](http://www.flukenetworks.com/optifiber) and take it for a virtual test drive. Or call us at **1-800-508-0490** (U.S.) and let a Fluke Networks Systems Engineer show you how to take the work out of fiber certification and OTDR testing.

For more information on models, options, accessories and product specifications, go to [www.flukenetworks.com/optifiber](http://www.flukenetworks.com/optifiber)

#### **NETWORK SUPERVISION**

**Fluke Corporation**  
P.O. Box 777, Everett, WA USA 98206-0777

Fluke Networks operates in more than 50 countries worldwide. To find your local office contact details, go to [www.flukenetworks.com/contact](http://www.flukenetworks.com/contact).

©2004 Fluke Corporation. All rights reserved.  
Printed in U.S.A. 6/2004 1988149 B-ENG-N Rev B