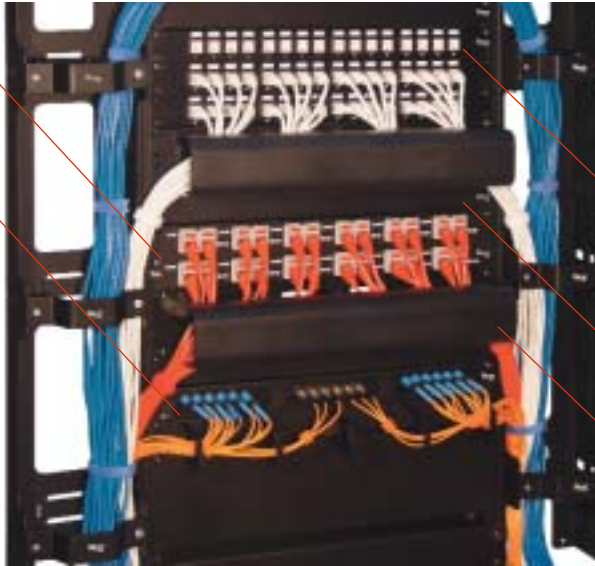




Blank Patch Panels Custom Solutions

Blank Bezel
Accepts ICC Bezels
108 Series

Blank Fiber Optic
Patch Panels
Accept All Fiber
Optic Adapter Panels



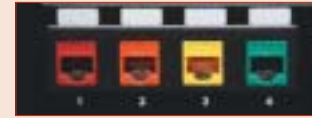
Flush Mount Blank
Patch Panel

Blank Panel Fills
Open Space Between
System Panels

Cable Management
Ring Panel with
Removable Cover
Provide a Clean
Appearance

Installation Benefits

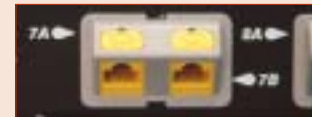
- Flush Blank Patch Panels



- Blank Patch Panels with ID Caps



- Bezel Blank Patch Panels



IC107BP8VB

NEW Flush Patch Panel Vertical

Flush mount design to add stability.

PART NUMBER	DESCRIPTION
IC107BP8VB	8-Port with 89D Bracket



IC107PP8VB

Blank Patch Panel Vertical

Panel is designed for wall mount and accommodates modular connectors and color ID caps.

PART NUMBER	DESCRIPTION
IC107PP8VB	8-Port with 89D Bracket



IC107BP016

NEW Flush Patch Panel

Flush mount design to add stability.

PART NUMBER	DESCRIPTION
IC107BP016	16-Port, 1 RMS



IC107PP012

Blank Patch Panel

Accommodates modular connectors and color ID caps.

PART NUMBER	DESCRIPTION
IC107PP012	12-Port, 1 RMS



IC107BP032

NEW Flush Patch Panel

Flush mount design to add stability.

PART NUMBER	DESCRIPTION
IC107BP032	32-Port, 2 RMS



IC107PP016

Blank Patch Panel

Accommodates modular connectors and color ID caps.

PART NUMBER	DESCRIPTION
IC107PP016	16-Port, 1 RMS



IC107BP048

NEW Flush Patch Panel

Flush mount design to add stability.

PART NUMBER	DESCRIPTION
IC107BP048	48-Port, 3 RMS



IC107PP024

Blank Patch Panel

Accommodates modular connectors and color ID caps.

PART NUMBER	DESCRIPTION
IC107PP024	24-Port, 2 RMS