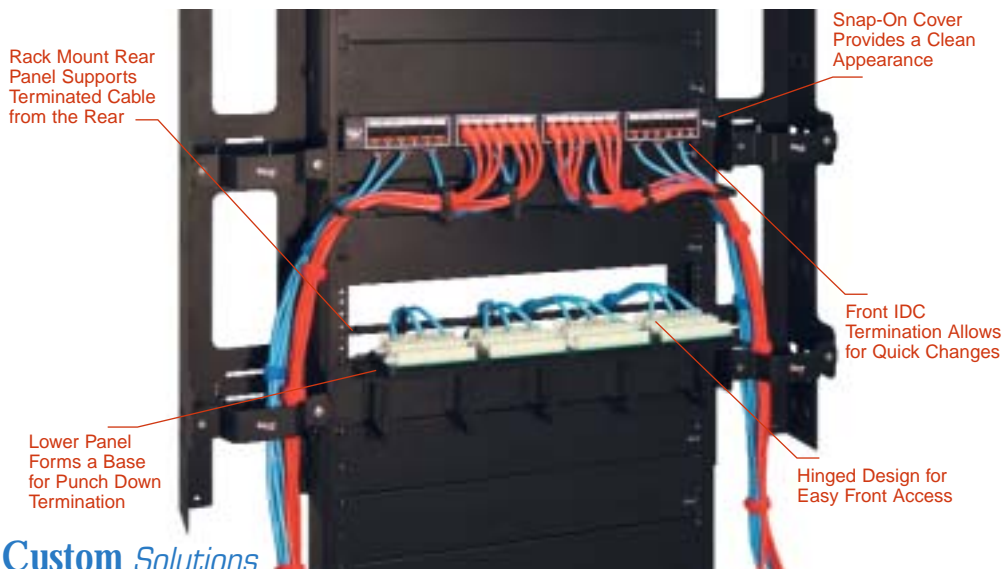




Front Access & Hinged Patch Panels



Rack Mount Rear Panel Supports Terminated Cable from the Rear

Snap-On Cover Provides a Clean Appearance

Front IDC Termination Allows for Quick Changes

Lower Panel Forms a Base for Punch Down Termination

Hinged Design for Easy Front Access

Custom Solutions

Installation Benefits

- Simplifies Installation Providing 110 and Jack Ports Up Front



- Hinged Design Allows Panel to be Folded Down and Punched



NEW Category 5e Front Access Patch Panel



This panel is designed to allow for front access patching and termination, while wall or rack mounted. The panel provides both the 110 IDC termination and the Category 5e jack ports on the same side. Ideal for applications with limitations in space. Includes #12 rack screws.

PART NUMBER	DESCRIPTION
ICMPP24F5E	24-Port, 1 RMS



ICMPP24F5E

NEW Category 5e Hinged Patch Panel



Hinged patch panel is designed to allow for front cable access and 110 punch down, while rack mounted. The panel comes equipped with a cable management interbay panel that allows the panel to fold down for punch down of new cable runs and then folds back into place. Includes #12 rack screws.

PART NUMBER	DESCRIPTION
ICMPP24H5E	24-Port, 2 RMS
ICMPP48H5E	48-Port, 4 RMS



ICMPP24H5E



ICMPP48H5E



Patch Panel Color Icon

Color icons are designed to apply to any patch panel for easy system administration and station identification. There are 12 icons per tree available in 9 colors.

PART NUMBER	DESCRIPTION
ICMPPSCIxx*	Voice (6 ea.) and Data (6 ea.)
ICMPPICDxx*	Data (12 ea.)
ICMPPICVxx*	Voice (12 ea.)

*xx = IV, WH, GY, BL, GN, OR, PR, RD, YL



ICMPPSCIxx*