

MAX[®] PATCH PANELS



MAX patch panels provide a flexible, high density termination solution for the telecommunications room. Using the full line of MAX modules (available separately), the panel can be configured for a variety of multimedia applications. Blank modules can be used to reserve ports for future capacity.

PATENTED

MODULAR PATCHING

Panels can be mounted directly to fit a standard 19 inch relay rack or cabinet

Available in 16-, 24- and 48-port configurations

Modules utilize Siemon's colored icons for easy identification and administration

Bold port numbering enables quick and ready identification of outlets

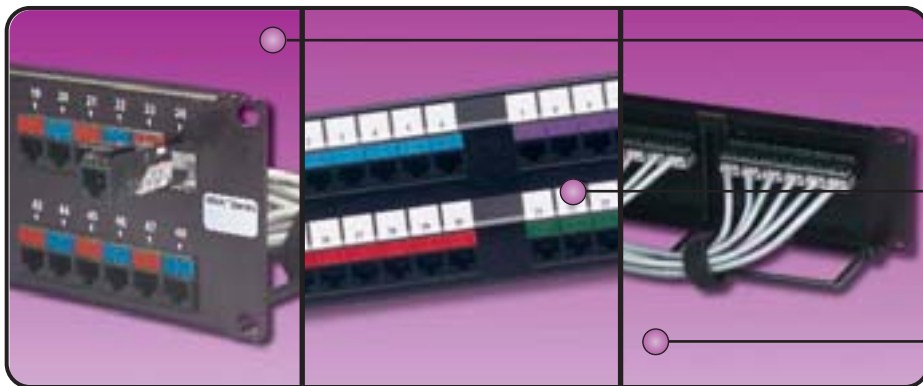
Write-on area provided for panel designation

High density design accommodates up to 24 ports per RMS [1 RMS = 44.5mm (1.75 in.)]

Multimedia capability — mix and match many different types of connectors

Lightweight, high strength brushed aluminum with black protective finish

Technical Tip!
Use flat MAX modules for patch panel applications



Individual modules snap into place from front or rear of panel for added installation flexibility

Removable designation labels can be laser printed and enable proper circuit identification for each port

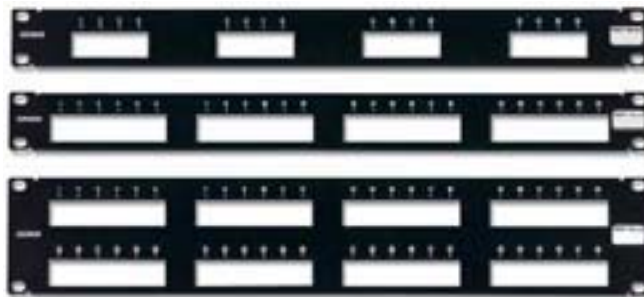
Rear cable management bar included for routing horizontal cables to terminations

ORDERING INFORMATION

MODULAR PATCHING

MAX® Series Patch Panel:

- MX-PNL-1616-port panel, 1 RMS
- MX-PNL-2424-port panel, 1 RMS
- MX-PNL-4848-port panel, 2 RMS



MAX Panels not compatible with shielded MAX modules. Use the TERA™-MAX panel.
 Note: 1 RMS = 44.5mm (1.75 in.)

S89D Bracket:

The MAX S89D offers an economical solution for smaller applications while allowing for a range of different media using the full line of MAX modules.

- MX-89D-1212-port Max panel mounted on an 89D bracket



Labeling Accessories:

- MX-PNL-LBL4**10 sheets of laser printable labels for 16-port MAX panel
- MX-PNL-LBL6**10 sheets of laser printable labels for 24- and 48-port MAX panel



**Visit our web site or contact our Technical Support Department for labeling software.

Fiber Management Trays (FMT):

Siemon Fiber Management Trays are an economical solution for managing fiber slack and splice trays. The management trays have been designed to easily retrofit any standard 1, 2, or 3 MAX series patch panel and can organize up to 96 fibers.

- CT-FMT-16Fiber tray for 16 and 24-port MAX patch panel, 1 RMS
- CT-FMT-32Fiber tray for 48-port MAX patch panel, 2 RMS



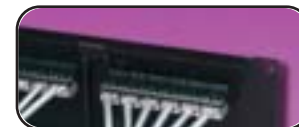
Reusable Hook and Loop Cable Managers:

- VCM-25-(XXX)-(X)Roll of 25 cable managers
- VCM-250-(XXX)-(X)Spool of 250 cable managers

Use (XXX) to specify length:

- 06 = 152mm (6 in.), holds 51mm (2 in.) diameter cable bundle
- 12 = 305mm (12 in.), holds 102mm (4 in.) diameter cable bundle
- 18 = 457mm (18 in.), holds 153mm (6 in.) diameter cable bundle

Use (X) to specify color: 1 = black, 2 = white, 3 = red, 4 = gray, 5 = yellow, 6 = blue, 7 = green, 9 = orange



For related product information request Spec Sheet(s):

- MAX Modules Tool-less (PROD-SS-MXM)
- MAX 5e Module Punch-down (PROD-SS-MPD)
- MAX 6 Modules (PROD-SS-MX6)
- 10G 6™ MAX Modules (PROD-SS-MX6U)
- Fiber Management Tray (PROD-SS-CTF)

Because we are continuously improving our products, The Siemon Company reserves the right to change specifications and availability without prior notice. CT®, MAX®, 10G 6™ and TERA™ are trademarks of The Siemon Company

The Americas
 Watertown, CT USA
 Phone (1) 860 945 4200

Europe/Middle East/Africa
 Surrey, England
 Phone (44) 0 1483 480040

Asia/Pacific
 Shanghai, P.R. China
 Phone (86) 21 6390 6778

WWW.SIEMON.COM



SIEMON™