

# HD5® Patch Panels

The HD5® series patch panels offer the most robust patching solution in the industry. HD5® panels with universal T568A/B wiring significantly exceed category 5e requirements with component and channel performance to 160MHz (Performance from 100 - 160 MHz based upon extrapolated TIA/TIA limits). The front surface of these panels is uninterrupted by screw heads or other hardware for a clean aesthetic appearance that allows sufficient space for circuit designation.

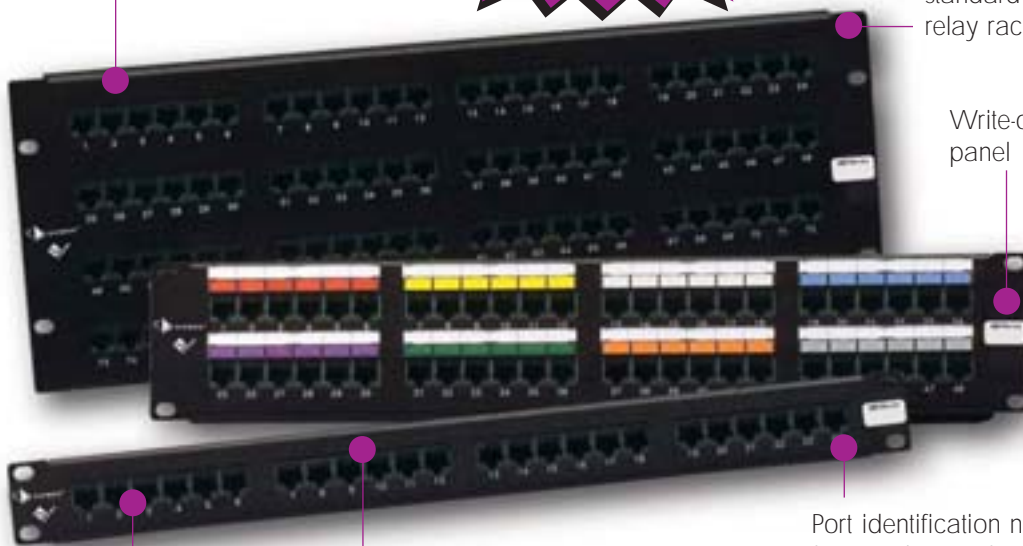
## PATENTED

Panels available in 16-, 24-, 48-, and 96-port configurations

**160 MHz**  
Featuring universal T568A/B wiring with component and channel performance to 160 MHz.



Black anodized panels can be mounted directly to an EIA standard 19 inch relay rack or cabinet



Write-on area for panel designation

Port identification numbers on front and rear of panel

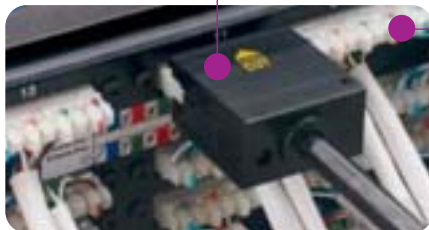
Modular outlets are FCC CFR 47 part 68 subpart F and IEC 60603-7 compliant and have 50 microinch gold plated contacts over 100 microinch nickel

The most economical way to order HD5 panels is in bulk project pack with universal T568A/B wiring option



Integrated rear cable manager properly guides cables to and from the rear of the panel

Siemon compliant pin technology allows the use of Siemon's multi-pair impact tool to significantly reduce termination time



Back of HD5 Panel

S110® termination openings on the rear are compatible with S110 patch plugs



Icon and label holder kits are included with every panel

**Ordering Information**

**HD5® Patch Panels:**

HD5-16 .....16-port panel, T568A/B wiring, 1 RMS



HD5-24 .....24-port panel, T568A/B wiring, RMS



HD5-32 .....32-port panel, T568A/B wiring, 2 RMS



HD5-48 .....48-port panel, T568A/B wiring, 21 RMS



HD5-96 .....96-port panel, T568A/B wiring, 4 RMS



Note: 1 RMS = 44.5mm (1.75 in.)

Panels include rear cable manager, icon label holders, designation labels, cable ties, and mounting hardware

ⓑ Add "B" for bulk project pack of 5 panels (rear cable managers and icon label holders not included but can be ordered separately).

Additional panel sizes are available. Contact Customer Service for more information

Note: 16- and 32-port HD5 panels feature S310® termination blocks and are not compatible with S110® multi-pair termination tools

**12-Port HD5 Mounted on S89D Bracket:**

The HD5-89D offers an economical solution for small applications and is ideal for retrofitting S66™ punch down blocks to a modular design.

HD5-89D-12.....12-port HD5 panel mounted on S89D bracket



height: 254.0mm (10.0 in.),  
width: 85.9mm (3.38 in.),  
depth: 47.8mm (1.88 in.)

HD-RWM.....Rear cable management bracket for HD® patch panels

HD5-ICON6 .....Adhesive-backed strips in a package of 8 for color-coding and port designation for 24-, 48-, or 96-port panels (icons not included)

HD5-ICON6-LBL.....10 sheets of labels for HD5-ICON6 for laser printing (16 labels per sheet)\*

HD5-ICON8 .....Adhesive-backed strips in a package of (4) for color-coding and port designation for 16-, or 32-port panels (icons not included)

HD5-ICON8-LBL.....20 sheets of labels for HD5-ICON8 for laser printing (8 labels per sheet)\*

HD5-LBL-ID .....Adhesive designation strips in a package of 20 for 24-, 48-, or 96-port panels

HD5-LBL-480 .....Adhesive strips for sequentially numbering panel ports 1 through 480 for 24-, 48-, or 96-port panels

HD5-LBL-2 .....White removable designation strips in a package of 50 for all versions of HD panels

HD5-LBL6-(X) .....Removable designation strips in a package of 8 for 24-, 48-, or 96-port panels

S788J4.....4-pair S110® termination tool

Use (X) to specify color: 2 = white, 5 = yellow, 6 = blue

\*Visit our web site or contact our Technical Support Department for labeling software

Because we are continuously improving our products, The Siemon Company reserves the right to change specifications and availability without prior notice.

HD®, HD5®, MC®, MAX®, S66™, S110® and S310® are trademarks of The Siemon Company

For related product information request Spec Sheet(s):

MAX® 5e Modules Punch-Down Termination (PROD-SS-MX5)

MC® 5 Modular Cords (PROD-SS-MOD)

**Siemon — Australia**  
Sydney, Australia  
Tel: (61) 2 9452 2666

**Siemon — China**  
Beijing, P.R. China  
Tel: (86) 10 6559 8860

**Siemon — Germany**  
Frankfurt, Germany  
Tel: (49) (0) 69 97168 184

**Siemon — Latin America**  
Coral Gables, Florida USA  
Tel: (1) 305 446 9150

**Siemon — Southeast Asia**  
Singapore  
Tel: (65) 345 9119

**Siemon — USA**  
Watertown, Connecticut  
Tel: (1) 866-548-5814

**Siemon — Canada**  
Markham, Ontario  
Tel: (1) 905 940 9223

**Siemon — France**  
Paris, France  
Tel: (33) 1 46 46 11 85

**Siemon — Italy**  
Milano, Italy  
Tel: (39) 02 64 672 209

**Latin American Sales  
Manufacturer's Representatives**  
Castroville, Texas USA  
Tel: (1) 830 538 6375

**Siemon — UK**  
Woking, England  
Tel: (44) (0) 1483 480040

