

S110[®] Wiring Block

Siemon's S110[®] field termination blocks combine category 5e performance with unparalleled installation features, and are ideal for use in cross-connect and consolidation point applications.

25-, 50-, 75-, and 100-pair blocks are available without legs for mounting directly to walls. If cable routing is required behind the blocks, 50-, 100-, 200- and 300-pair sizes are available with mounting legs. The 50- and 100-pair sizes offer detachable mounting legs to assist in routing cables behind blocks during and after installation.

The 100-pair blocks (also used in 200- and 300-pair sizes) have been enhanced to add additional strength to assist when terminating cables using blocks with legs.

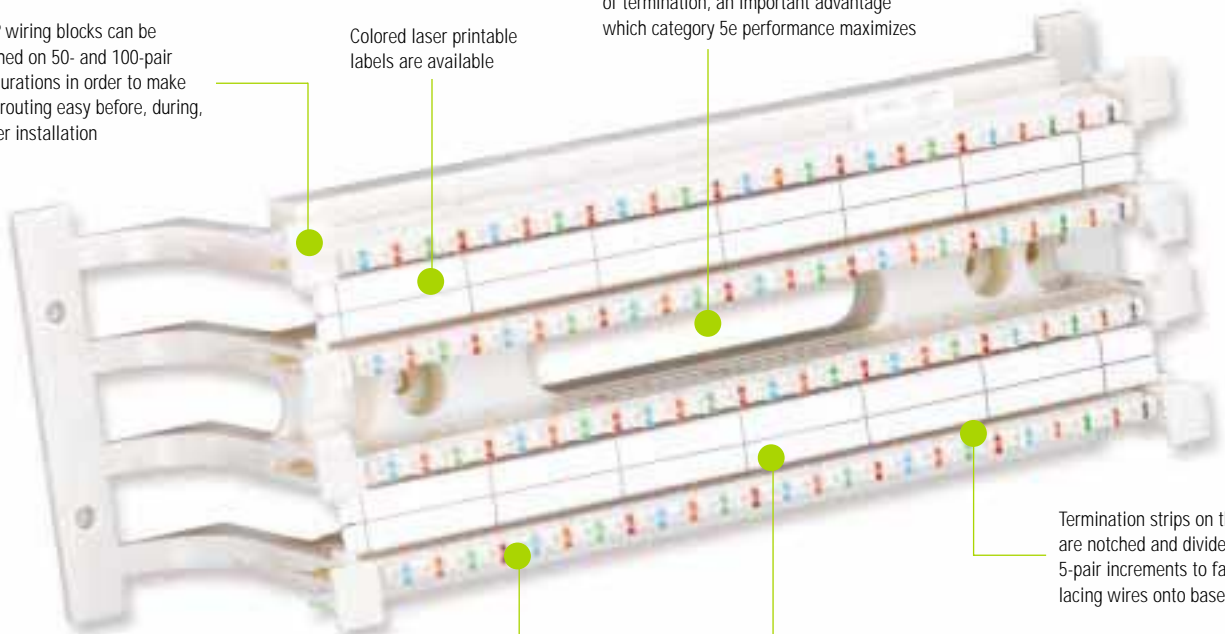
PATENTED
ENHANCED



S110[®] wiring blocks can be detached on 50- and 100-pair configurations in order to make cable routing easy before, during, or after installation

Colored laser printable labels are available

Cable access openings in the wiring block enable cables to be fed directly to the point of termination, an important advantage which category 5e performance maximizes



Termination strips on the base are notched and divided into 5-pair increments to facilitate lacing wires onto base

Color-coded pairs on each block

Designation strip with interchangeable colored labels can be mounted in the center and/or the outside positions of the wiring block. Each label has 2-, 3-, 4-, or 5-pair markings

S110[®] connecting blocks come in 2-, 3-, 4-, or 5-pairs



The tabs for removing the detachable legs on the 100-pair block are located on the face of the block to simplify removal



1 or 2 RMS S110[®] cable managers can be ordered with or without mounting legs. Optional covers are available separately for 50- and 100-pair sizes

SIEMON *cabling* **SYSTEM**

Ordering Information



S110® Field Termination Kits:



Complete S110® installation kits are available which include S110® wiring blocks with detachable legs*, S110® connecting blocks, and label holders with white designation labels.

*Legs detachable on 50- and 100-pair version only.

- S110A(X)1-50FT50-pair S110® field termination kit
- S110A(X)2-100FT100-pair S110® field termination kit
- S110A(X)2-300FT300-pair S110® field termination kit

Use (X) to specify the connecting blocks:

- A = S110C-5, 5-pair connecting blocks
- B = S110C-4, 4-pair connecting blocks
- C = S110C-3, 3-pair connecting blocks
- D = S110C-2, 2-pair connecting blocks

Each kit includes adequate connecting blocks to complete each 25-pair termination strip on the S110® wiring block (e.g. S110AB2-100FT) would include five 4-pair and one 5-pair connecting block per 25-pair termination strip, or a total of twenty 4-pair and four 5-pair connecting blocks)

S110® Connecting Blocks:

- S110C-2A2-pair connecting block, blue/orange
- S110C-2B2-pair connecting block, green/brown
- S110C-33-pair connecting block, blue/orange/green
- S110C-44-pair connecting block, blue/orange/green/brown
- S110C-55-pair connecting block, blue/orange/green/brown/slate



S110C-2A



S110C-2B



S110C-3



S110C-4



S110C-5

S110® Wiring Blocks Without Legs:



S110DW1-25.....25-pair, S110® wiring block



S110DW1-50.....50-pair, S110® wiring block



S110DW1-75.....75-pair, S110® wiring block



S110DW2-100.....100-pair, S110® wiring block

Ordering Information

S110® Wiring Blocks With Legs:



S110AW1-50.....50-pair, S110® wiring block with legs



S110AW2-100.....100-pair, S110® wiring block with legs



S110AW2-200.....200-pair, S110® wiring block with legs



S110AW2-300.....300-pair, S110® wiring block with legs

S110® Wiring Block Mounting Legs:



S110L-5050-pair, S110® mounting legs, (1 set of 2)



S110L2-100100-pair, S110® mounting legs, (1 set of 2)



S110L-200200-pair, S110® mounting legs, (1 set of 2)



S110L-300300-pair, S110® mounting legs, (1 set of 2)

S110® Designation Label Sheets:

S110-SHT-(X)*2-,3-,4-,5-pair colored designation labels (package of 6)

Use (X) to specify color: 2 = white, 3 = red, 4 = gray, 5 = yellow, 6 = blue, 7 = green, 8 = violet, 9 = orange

S110-HLDRClear plastic label holders, bag of (6)

**Visit our web site or contact our Technical Support Department for labeling software*



S110® Covers:

S110-CVR-50-(XX)50-pair cover for S110® block

S110-CVR-100-(XX)100-pair cover for S110® block

Use (XX) to specify color: 00 = clear, 01 = black, 20 = ivory



Related Products



S110° Test Adapters:

- TAP-110-U11-pair, USOC
- TAP-110-E22-pair, 10BASE-T
- TAP-110-UT2-pair, USOC/Token Ring
- TAP-110-U33-pair, USOC
- TAP-110-U44-pair, USOC
- TAP-110-T44-pair category 5, T568A
- TAP-110-A44-pair, category 5, T568B



S100A2 Wire Manager:

- S100A2Snap on S110° wire manager, white
- S100A2-01Snap on S110° wire manager, black



Wall Mount S110° Cable Managers:

- S110B1RMSWhite cable manager without legs, 1 RMS
- S110B2RMSWhite cable manager without legs, 2 RMS
- S110A1RMSWhite cable manager with legs, 1 RMS
- S110A2RMSWhite cable manager with legs, 2 RMS

Note: 1 RMS = 44.5mm (1.75 in.)



S110B1RMS



S110A1RMS



S110B2RMS



S110A2RMS

Tools:

- S788J15-pair termination tool
- S788J5BReplacement cutting blades for 5-pair tool
- S788J5HReplacement head for 5-pair impact tool
- S788J44-pair termination tool
- S788J4BReplacement cutting blades for 4-pair tool
- S788J4HReplacement head for 4-pair impact tool



S110° Cable Assemblies:

- S110P1-P1-(XX)1-pair, double-ended S110° patch cord
 - S110P2-P2-(XX)2-pair double-ended S110° patch cord
 - S110P3-P3-(XX)3-pair double-ended S110° patch cord
 - S110P4-P4-(XX)Category 5e compatible, 4-pair double-ended S110° patch cord
 - S110P4-T4-(XX)Category 5e compatible, 4-pair S110°-to-modular plug, T568A
 - S110P4-A4-(XX)Category 5e compatible, 4-pair S110°-to-modular plug, T568B
 - S110P1-U1-(XX)1-pair, S110°-to-modular plug, USOC
 - S110P2-E2-(XX)2-pair, S110°-to-modular plug, 10BASE-T
 - S110P2-UT-(XX)2-pair, S110°-to-modular plug, Token Ring
- Use (XX) to specify length: 03 = 0.91m (3 ft.), 05 = 1.5m (5 ft.), 07 = 2.13m (7 ft.), 10 = 3.05m (10 ft.), 15 = 4.57m (15 ft.), 20 = 6.10m (20 ft.), 25 = 7.65m (25 ft.)

Custom lengths, colors and wiring configurations available upon request.



S110° Patch Plugs:

- S110P1Field-terminated, 1-pair, S110° patch plug
- S110P2Field-terminated, 2-pair, S110° patch plug with red and blue oval icon
- S110P3Field-terminated, 3-pair, S110° patch plug with red and blue oval icon
- S110P4Category 5e, field-terminated, 4-pair, S110° patch plug with red and blue oval icon



S110P1



S110P3



S110P2



S110P4

For related product information request Spec Sheet(s):

- S110° Tap® Test Adapter (PROD-SS-TAP)
- S110° Disconnect System (PROD-SS-10T)
- S110° Category 5e Modular Jack Panel (PROD-SS-10J)
- S110° Rack Mount Series (PROD-SS-10W)
- S110° Category 5 Patch Plug (PROD-SS10P)

The Siemon Company Australia

Sydney, Australia
Tel: (61) 2 9452 2666

The Siemon Company Canada

Markham, Ontario
Tel: (1) 905 940 9223

The Siemon Company China

Beijing, P.R. China
Tel: (86) 10 6559 8860

The Siemon Company Europe & Middle East

Woking, England
Tel: (44) (0) 1483 480040

The Siemon Company Latin America

Coral Gables, Florida USA
Tel: (1) 305 446 9150

Latin American Sales Manufacturer's Representatives

Castroville, Texas USA
Tel: (1) 830 538 6375

The Siemon Company Southeast Asia

Singapore
Tel: (65) 345 9119

The Siemon Company USA

Watertown, Connecticut
Tel: (1) 860 274 2523

