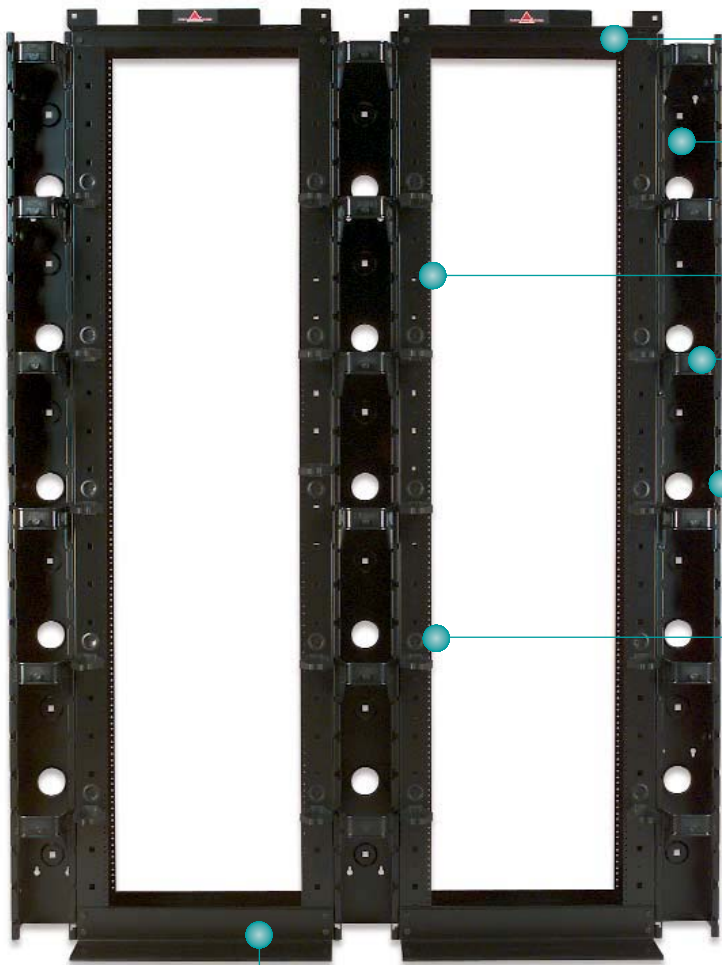


RS RACK SYSTEM



Siemon's cable management rack system (RS) combines a 2.1m (7 ft.) x 19 inch black aluminum or steel rack with cable management accessories to provide a complete management solution. Ideal for all size installations, the rack features fully usable 45 RMS capacity. An optional 1.2m (4 ft.) power strip is available and mounts directly to rear of rack to provide power to active electronics.

RACKS AND CABLE MANAGEMENT



Ladder channels on top of rack easily accommodate standard 305mm (12 in.) ladder tray

Cable management channel is available in 76mm (3 in.) or 152mm (6 in.) versions. Hook and loop cable managers can be inserted at the back of the channel for routing additional horizontal or backbone cables

Mounting holes for twist-lock cable managers are located on the front, side, back, and within channel for maximum flexibility

Cable access holes allow cables to be routed from front-to-back on the rack

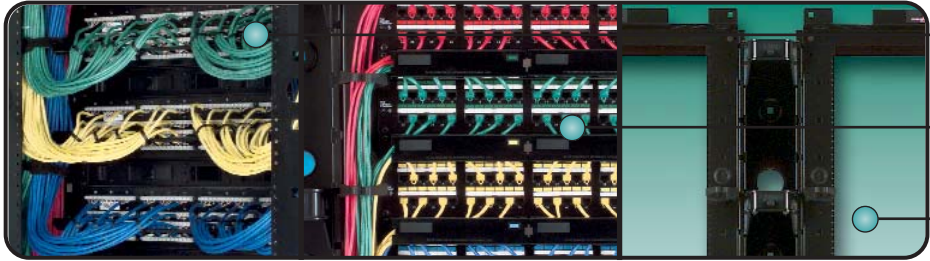
Removable channel retainers can be hinged to left or right and located in any position along the vertical channel

Twist-lock hook and loop cable managers can be custom located in side channels to manage various size cable bundles

Mounting holes provided for anchoring rack to floor



Siemon has developed an extended depth RS rack for managing extra large volumes of horizontal cable



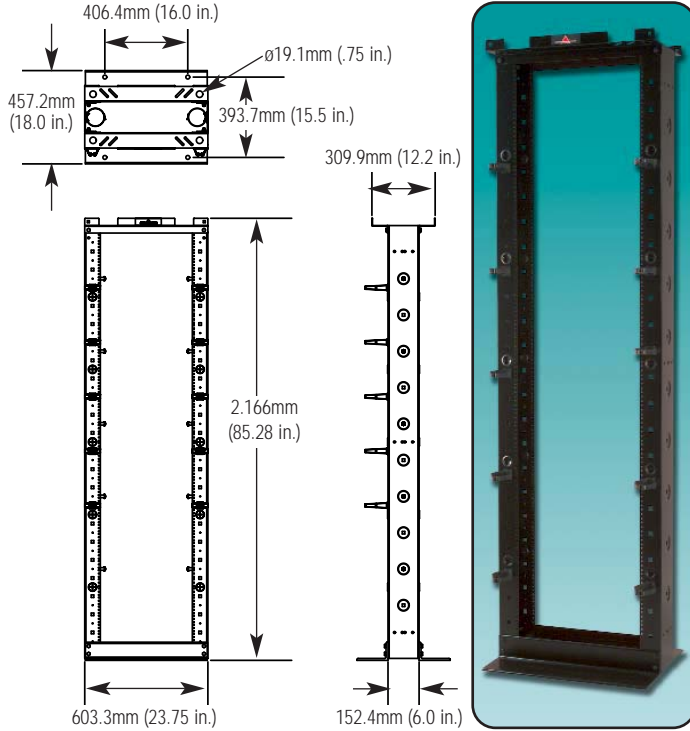
76mm (3 in.) x 152mm (6 in.) vertical side rail channels on rack provide large area for routing high volumes of horizontal or backbone cables

High capacity twist-lock cable managers lock into place quickly without use of screws or mounting tools. They can be easily located in a wide range of mounting holes to customize cable management

Optional vertical cable management channels allow a high volume of patch cords to be routed between two racks or on a single rack

PRODUCT INFORMATION

RACKS AND CABLE MANAGEMENT



Siemon Rack System:

RS-07.....7 ft. x 19 inch (2.1m x 482mm) aluminum cable management rack system. Includes: rack assembly hardware, 10 high-capacity cable managers, 10 hook and loop cable managers, grommets, and ground lug

height: 2.1m (7 ft.),
width: 609.6mm (24 in.),
depth: 457.2mm (18 in.)

Add "S" for steel

Note: Aluminum racks are intended for use with connecting hardware and cable managers only. For mounting of active equipment, steel racks are recommended.

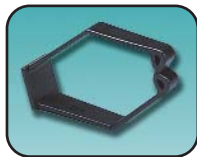
Extended Depth RS Rack:

RS-07E.....7 ft. x 19 inch (2.1m x 482mm) aluminum extra-deep (0.37m [14.5 in.]) cable management rack system. Includes: rack assembly hardware, 19 high-capacity cable managers, 10 hook and loop cable managers, grommets, and ground lug

height: 2.1m (7 ft.),
width: 609.6mm (24 in.),
depth: 457.2mm (18 in.)

Rack Accessories:

- RS-CNL 152mm (6 in.) x 2.1m (7 ft.) vertical cable management channel for mounting between 152mm (6 in.) deep racks (includes hardware)
- RS-CNL3 76mm (3 in.) x 2.1m (7 ft.) vertical cable management channel for mounting between 76mm (3 in.) deep racks (includes hardware)
- RS-CH Box of 10 high-capacity cable managers for front of rack
- RS-CNL-MGR..... Box of 10 channel retainers for RS-CNL and RS-CNL3
- RS-VCM Box of 10 quarter-turn hook and loop cable managers [includes black 457.2mm (18 in.) manager
- RS-PO4 1.2m (4 ft.) power strip for rear of rack, 10 outlets (includes hardware)



RS-CH



RS-CNL-MGR



RS-VCM



RS-TRAY



SH-S19

Because we are continuously improving our products, The Siemon Company reserves the right to change specifications and availability without prior notice.

The Americas
Watertown, CT USA
Phone (1) 860 945 4200

Europe/Middle East/Africa
Surrey, England
Phone (44) 0 1483 480040

Asia/Pacific
Shanghai, P.R. China
Phone (86) 21 6390 6778

For related product information request **Spec Sheet(s)**:
19 Inch Cable Managers (PROD-SS-CBM)

WWW.SIEMON.COM



SIEMON™