

Product Information Sheet

AUXILIARY FRAMING CHANNEL SPLICE

Used to butt-splice either 9/16" x 2" (Figure A) or 1" x 2" (Figure B) Auxiliary Framing Channel. Material is steel finished with Gold over zinc plating.

■ Kit consists of:

- 2 each splice plates (no drilling required)
- 1 each 3/8-16 hex cap screw
- 1 each 3/8-16 hex nut and split lock washers

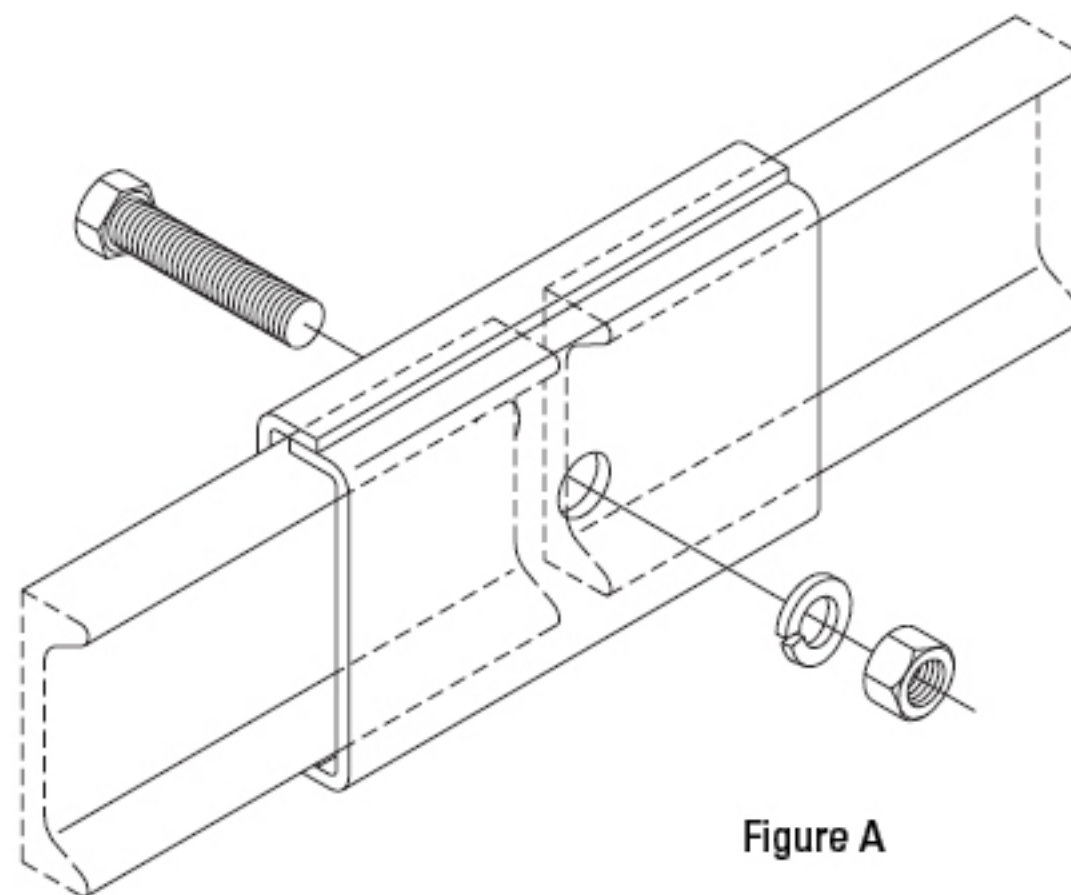


Figure A

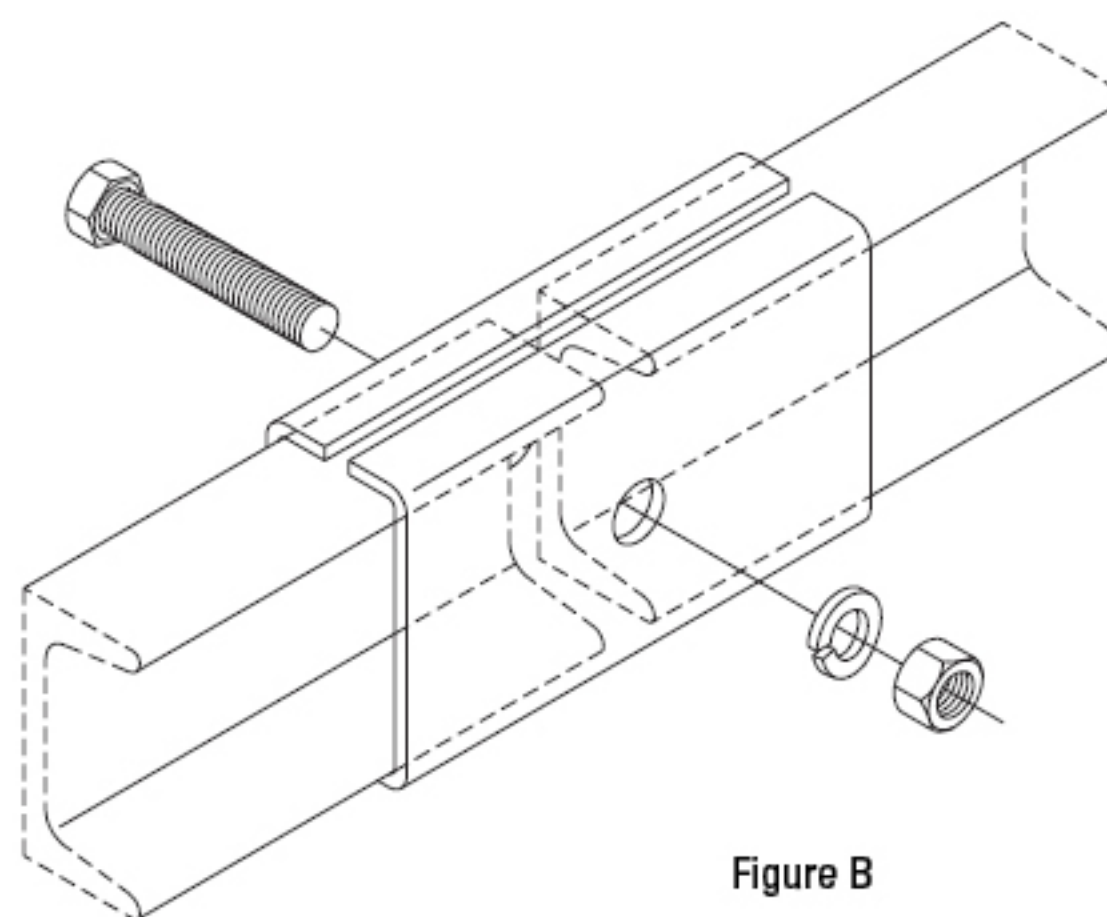


Figure B

| Part Number | Description | Fig. | Shipping Weight |
|-------------|------------------------|------|-----------------|
| 10715-001 | For 9/16" x 2" channel | A | 1 lb |
| 11307-000 | For 1" x 2" channel | B | 1 lb |

Sold by:



800-834-4969 in US & Canada • www.chatsworth.com