



Compact Size  
Rugged Construction  
Vandal Resistant

**FEATURES**

- Available in pre-configured and user-configurable versions
- Flexible mounting for active equipment including hubs and UPSs
- Door lifts off when open for easy installation, hinge easily reversed in the field
- Easily expanded in the field to support future growth
- Engineered airflow to prolong the life of active equipment
- Durable powder coat finish protects equipment in isolated locations
- Wide range of standard kits for maximum versatility
- Optional provisions for fiber, coax, and other media

**SPECIFICATIONS**

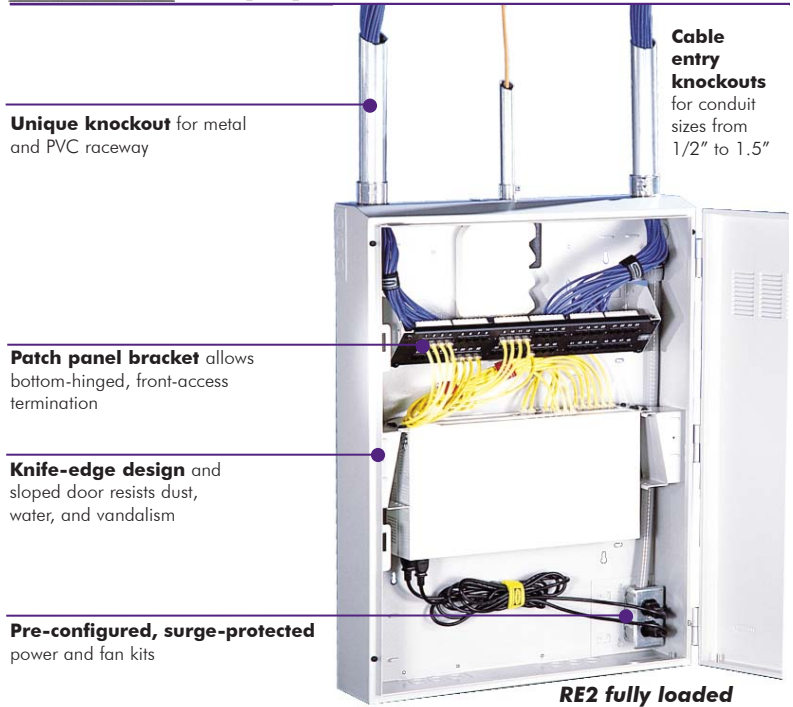
- ◆ UL 1863
- ◆ 16 gauge CRS welded construction
- ◆ Designed specifically for hostile environments:
  - Tamper resistant per Telcordia™ GR-487-CORE
  - Ventilation pattern complies with UL 1950
  - Designed to meet NEMA 2
- ◆ Durable powder coat finish
- ◆ 2 sets of universal mounting rails with #12-24 tapped holes 5/8", 5/8", 1/2" EIA standard pattern
- ◆ Load capacity: 100 lbs.
- ◆ Accepts maximum hub depth of 14.5" (RE2 and RE4) or 22" (RE4X)
- ◆ Abundant cable entry through sides, bottom, and top - compatible with major raceway and popular conduit sizes
- ◆ Designed to dissipate 160W - industry maximum without fan
- ◆ Weight: RE4 = 50.6 lbs.; RE2 = 45.1 lbs.



**Usable Rack Space**

	Total	Switch	Panels
RE2	4	2	2
RE4	9	5	4
RE4X	9	5	4

**REBOX® Commercial Remote Equipment Cabinet**



The REBOX® commercial cabinets are specifically designed for housing remote network equipment. REBOX commercial cabinets exceed the stringent requirements of UL and Telcordia™ enclosure standards. The resulting safe and secure environment surpasses the industry for protecting communications equipment in locations such as classrooms, warehouses, and retail outlets.

Use the pre-configured REBOX as a small remote data center. Each cabinet includes dedicated mounting for switches and other active equipment and another dedicated mounting area for patch panels.

Use the unloaded REBOX in applications such as horizontal cross connects or the telecommunications room. The modular design of this cabinet is very versatile, allowing the installer to configure the cabinet with a wide variety of accessories to mount any type of components.

**APPLICATIONS**

- Horizontal Closets/Telecommunications Enclosures per TIA 569 for:
  - Schools
  - Uncontrolled Locations
  - Institutions
  - Correctional Facilities
  - Airports

**ORDER INFORMATION**



Loaded IDF42 shown with REK19, REKZ and REKBB20

**REBOX® - Commercial Remote Equipment Cabinet - Pre-Configured**

- Delivery: 1 base/rear section with welded 19" brackets for 2 hubs  
 1 front door with 2 locks (NSQ tool)  
 1 set 19" extension brackets for 2 additional hubs (RE4 only)  
 1 set 19" bottom hinge brackets for patch panels

Capacity	Max. Hub Depth	Height (A)	Width	Depth	Color	Catalog No.
2 hubs	14" (356)	32" (818)	24.2" (615)	7" (178)	Light gray	<b>RE2</b>
2 hubs	14" (356)	32" (818)	24.2" (615)	7" (178)	Black	<b>RE2B</b>
4 hubs	14" (356)	32" (818)	24.2" (615)	10" (254)	Light gray	<b>RE4</b>
4 hubs	14" (356)	32" (818)	24.2" (615)	10" (254)	Black	<b>RE4B</b>
4 hubs	22" (559)	42" (1067)	24.2" (615)	10" (254)	Light gray	<b>RE4X</b>
4 hubs	22" (559)	42" (1067)	24.2" (615)	10" (254)	Black	<b>RE4XB</b>

**REBOX® - Commercial Remote Equipment Cabinet - Unloaded**

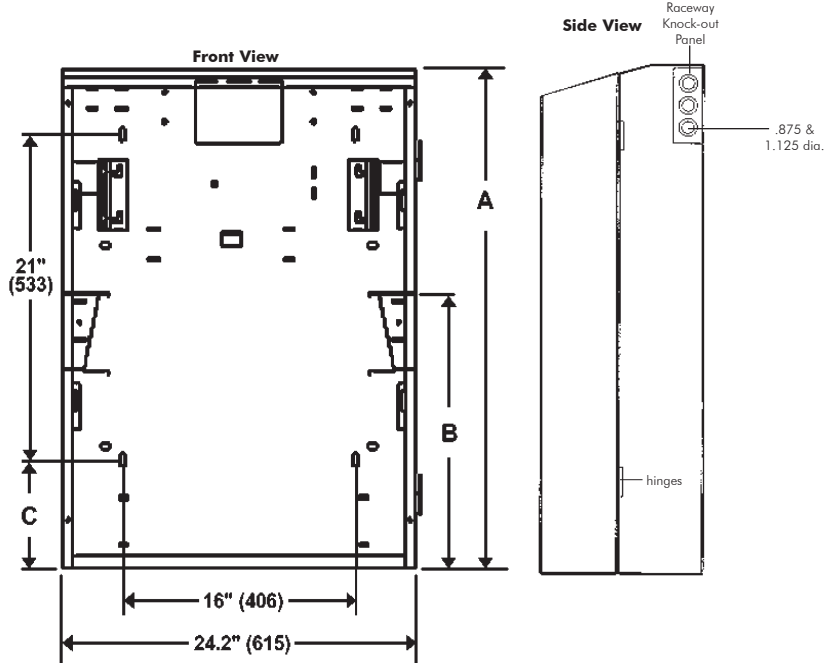
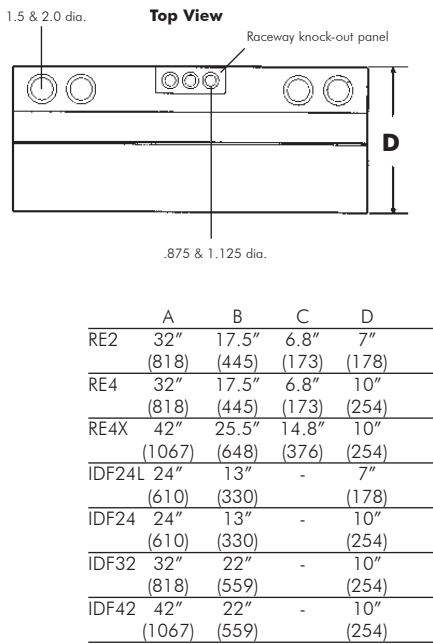
The unloaded REBOX can be configured to accept wall mount, rack mount connecting hardware and active equipment. The mounting rails are not included, providing for flexibility to configure your requirements. Configure by selecting accessories shown in the catalog to house a wide range of datacom equipment.

- Delivery: 1 base/rear section  
 1 front door with 2 locks (NSQ tool)

Height	Width	Depth	Rear Wall Units	Color	Catalog No.
24" (600)	24.2" (615)	7" (178)	3	Light Gray	<b>IDF24L*</b>
24" (600)	24.2" (615)	10" (254)	3	Light Gray	<b>IDF24</b>
32" (813)	24.2" (615)	10" (254)	4	Light Gray	<b>IDF32</b>
42" (1067)	24.2" (615)	10" (254)	5	Light Gray	<b>IDF42</b>

\* Front door includes Cat60 key locks

**DIMENSIONS**



Pre-configured REbox - front shown with door removed.

**RELATED ACCESSORIES**

Fan Kits, Power Kit, Filter Kit, Sound Dampening Kit.



**Hubbell Premise Wiring**

HUBBELL INCORPORATED (Delaware)  
 14 Lord's Hill Road • Stonington, CT 06378-0901 • (860) 535-8326 • 800-626-0005  
 Fax: (860) 535-8328 • Internet site: <http://www.hubbell-premise.com>

**Worldwide Locations**

Hubbell Premise Wiring, Asia Pacific	852-2836-7131	Fax: 852-2836-7132	Hubbell de Mexico, S.A. de C.V.	52-5-559-5304	Fax: 52-5-559-5885
Hubbell Canada Inc.	905-839-1138	Fax: 905-839-9108	Hubbell Premise Wiring, Middle East	971-4-393-4192	Fax: 971-4-393-4194
Hubbell Premise Wiring, China	8621-6309-0119	Fax: 8621-6309-0122	Hubbell Premise Wiring, Puerto Rico	787-720-7185	Fax: 787-789-2796
Hubbell Premise Wiring, Europe	44-(0)1234-848550	Fax: 44-(0)1234-856190	Hubbell-Taian Co., Ltd., Taiwan	886-2-(0)2515-0855	Fax: 886-2-(0)2515-0899
Hubbell Int'l. Inc., Korea Branch	82-2-(0)2607-1363	Fax: 82-2-(0)2603-7386	Hubbell Incorporated, Turkey	90-216-414-8147	Fax: 90-216-414-8148
Hubbell Premise Wiring, Latin America	305-251-4236	Fax: 305-251-4087	Hubbell Premise Wiring, Venezuela	58-16-6807453	Fax: 58-281-2820323