

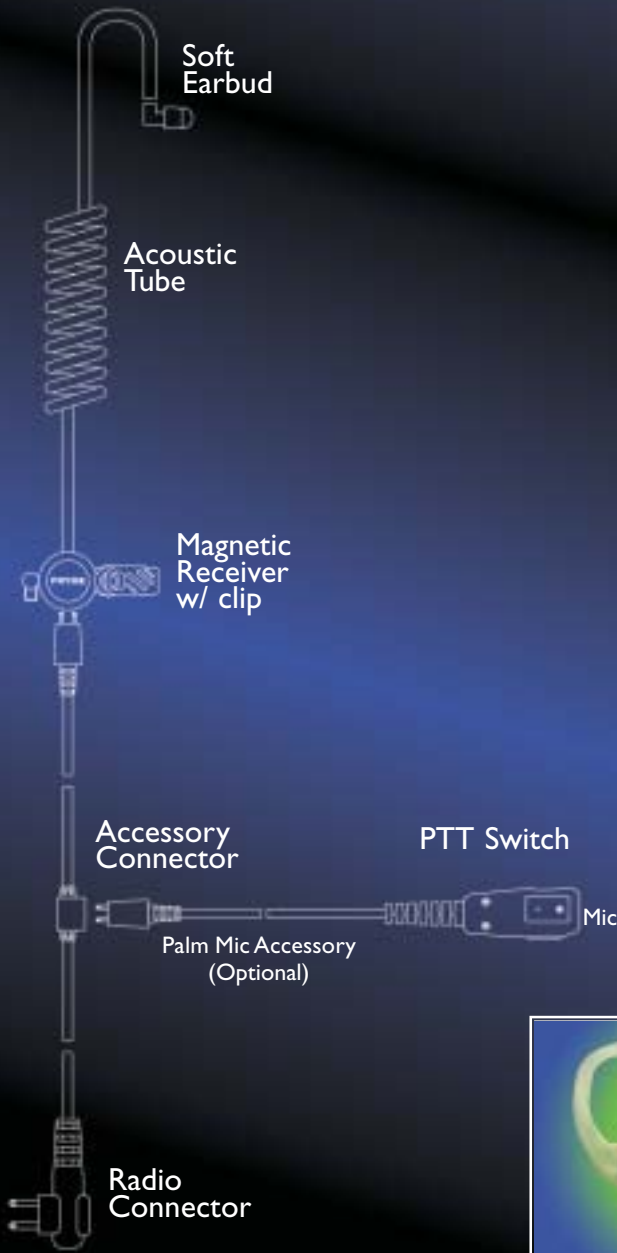
# SPM-1000

SERIES

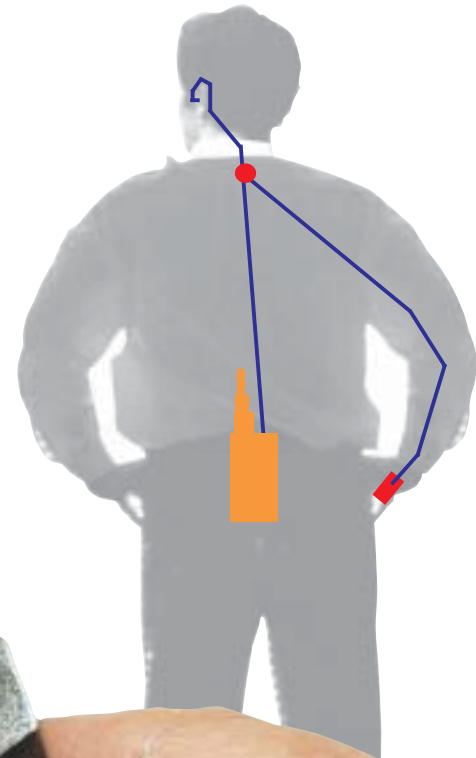
## Acoustic Tube Surveillance Kit

The SPM-1000 series is a single-wire acoustic tube earphone for two-way radios. The unit is quite similar to more expensive surveillance style earphones made by other manufacturers. It includes a high-quality acoustic ear tube made out of durable surgical grade tubing for great comfort and a low-profile look. The SPM-1000 also features heavy grade industrial polyurethane jacketed cable for maximum life in the field. The cabling can be easily concealed under a sport coat or other clothing. For privacy and security, there is no better choice.

When you need to talk back, the SPM-1000 features an in-line jack for connecting microphone and Push-To-Talk options. A number of different microphone and PTT options are available, one of which is bound to be perfect whatever the situation. Adding a microphone option effectively converts your one-wire earphone into a two-wire surveillance system.



The SPM-1000 includes two Flexible Open Ear Inserts FREE!



### SPECIFICATIONS

Hardware Specs

	Earphone Only	Palm/Lapel Mic (Accessory)
Weight	1.3 ounces	1.1 ounces
Cable Pull	Typically 30 lbs	Typically 30 lbs
Cable Jacket	PU	PU
PTT Operations	-	>one million
Operating Temp	-30° C to +75° C	-30° C to +75° C

Electrical Specs

	Earphone Only	Palm/Lapel Mic (Accessory)
Sensitivity	-	-60dB ± 3dB @ 1k Hz
Frequency Range	300 to 3000 Hz	300 to 3000 Hz
Operating Voltage	-	1.5 to 12V
Current Draw	-	< 500 uA
Impedance	150 ohms ± 20% @ 1kHz	2000 ohms
Sound Pressure Level	> 80 dB	-

**PRYME**  
Radio Products

**PRYME Radio Products**  
480 Apollo St., #E  
Brea, CA 92821 • USA  
Phone: 714-257-0300  
Fax: 714-257-0600  
Web: www.pryme.com

