



Remote Equipment Cabinet

The REBOX® cabinets are specifically designed for housing remote and network equipment.

REBOX® cabinets exceed the stringent requirements of UL and Telcordia™ enclosure standards. The resulting safe and secure environment surpasses the industry for protecting communications equipment in locations such as classrooms, warehouses, and retail outlets.

Use the pre-configured REBOX® as a small remote data center. Each cabinet includes dedicated mounting for hubs and other active equipment and another dedicated mounting area for patch panels.

Use the unloaded REBOX® in applications such as horizontal cross connects or the telecommunications room. The modular design of this cabinet is very versatile, allowing the installer to configure the cabinet with a wide variety of accessories to mount any type of components.

SPECIFICATIONS

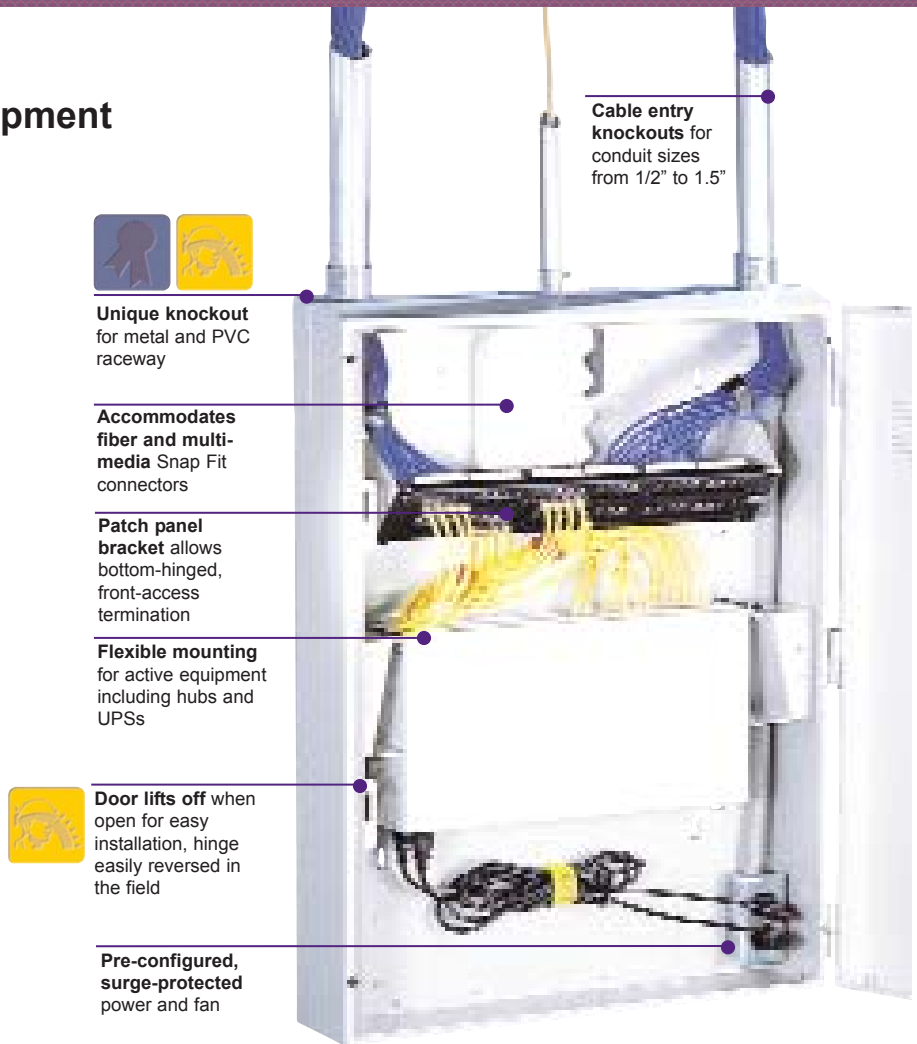
- ◆ 16 gauge CRS welded construction
- ◆ Designed specifically for hostile environments:
 - Tamper resistant per Telcordia™ GR-487-CORE
 - Ventilation pattern developed to comply with UL 1950
 - Designed to meet NEMA 2
- ◆ Durable powder coat finish
- ◆ 2 sets of universal mounting rails with #12-24 tapped holes 5/8", 5/8", 1/2" EIA standard pattern
- ◆ Load capacity: 100 lbs.
- ◆ Accepts maximum hub depth of 14.5" (RE2 and RE4) or 22" (RE4X)
- ◆ Abundant cable entry through sides, bottom, and top - compatible with major raceway and popular conduit sizes
- ◆ Designed to dissipate 160W - industry maximum without fan
- ◆ Weight: RE4 = 50.6 lbs.; RE2 = 45.1 lbs.

Usable Rack Space

	Total	Switch	Panels
RE2	4	2	2
RE4	9	5	4
RE4X	9	5	4



See page A58



Cable entry knockouts for conduit sizes from 1/2" to 1.5"



Unique knockout for metal and PVC raceway

Accommodates fiber and multi-media Snap Fit connectors

Patch panel bracket allows bottom-hinged, front-access termination

Flexible mounting for active equipment including hubs and UPSs



Door lifts off when open for easy installation, hinge easily reversed in the field

Pre-configured, surge-protected power and fan

RE2 fully loaded
Engineered airflow to prolong the life of active equipment

Easily expanded in the field to support future growth

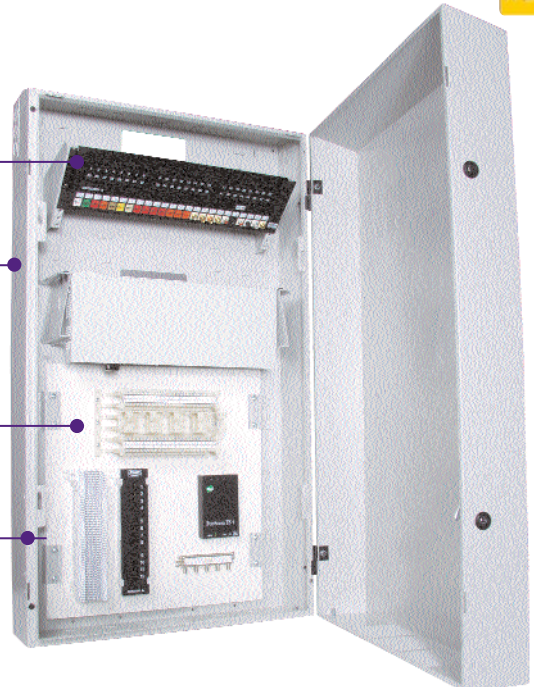


Mounting for 19" patch panel hinges down for front access termination

Durable powder coat finish protects equipment in isolated locations

Wide range of standard kits for maximum versatility

Knife-edge design and sloped door resists dust, water, and vandalism



ORDER INFORMATION



RE4XB

REBOX® - Remote Equipment Cabinet - Pre-Configured

Delivery: 1 base/rear section with welded 19" brackets for 2 hubs
 1 front door with 2 locks (NSQ tool)
 1 set 19" extension brackets for 2 additional hubs (RE4 only)
 1 set 19" bottom hinge brackets for patch panels

Max.						
Capacity	Hub Depth	Height	Width	Depth	Color	Catalog No.
2 hubs	14" (356)	32.0" (818)	24.2" (615)	7" (178)	Light gray	RE2
2 hubs	14" (356)	32.0" (818)	24.2" (615)	7" (178)	Black	RE2B
4 hubs	14" (356)	32.0" (818)	24.2" (615)	10" (254)	Light gray	RE4
4 hubs	14" (356)	32.0" (818)	24.2" (615)	10" (254)	Black	RE4B
4 hubs	22" (559)	42.0" (1067)	24.2" (615)	10" (254)	Light gray	RE4X
4 hubs	22" (559)	42.0" (1067)	24.2" (615)	10" (254)	Black	RE4XB

REBOX® - Remote Equipment Cabinet - Unloaded

The unloaded REBOX can be configured to accept wall mount, rack mount connecting hardware and active equipment. The mounting rails are not included, providing for flexibility to configure your requirements. Configure by selecting accessories shown below and on pages B24 to house a wide range of datacom equipment.

Delivery: 1 base/rear section
 1 front door with 2 locks (NSQ tool)

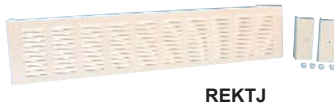
Height	Width	Depth	Rear Wall Units	Color	Catalog No.
24" (600)	24.2" (615)	10" (254)	3	Light Gray	IDF24
32" (813)	24.2" (615)	10" (254)	4	Light Gray	IDF32
42" (1067)	24.2" (615)	10" (254)	5	Light Gray	IDF42

REBOX® ACCESSORIES - See Next page for more accessories

Joining Kits

Join REBOX® cabinets side-by-side or top-to-bottom

Delivery: 1 shroud, 16 ga cold rolled steel
 1 mounting hardware kit
 Description - Top-to-bottom kit - for use with all REBOX® cabinets.
 Finish: Light gray
 Catalog No. **REKTJ**



REKTJ

Description - Side-by-side kit - for use with IDF24. Finish: Light gray
 Catalog No. **REKSJ20**



REKSJ20

Description - Side-by-side kit for use with RE2, RE4, IDF32
 Finish: Light gray
 Catalog No. **REKSJ30**

Description - Side-by-side kit - for use with RE4X, IDF42
 Finish: Light gray
 Catalog No. **REKSJ40**

Conversion Kit

Converts an RE2 to an RE4 for added space

Delivery: 1 RE4 door, 2 hub mounting expansion brackets
 Color Catalog No.
 Light gray **REKU**
 Black **REKUB**



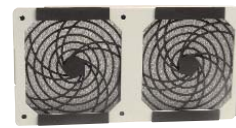
REKUB



Fan Kit

Increases ventilation. Order 1 per RE2, 2 per RE4, RE4X, IDFX

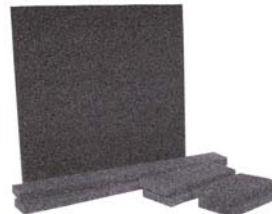
Delivery: 1 57 CFM fan
 1 2' line cord
 1 Hubbell Valise™ 2-prong plug
 1 kit assembly hardware
 Catalog No. **REKF**



Fan Filter Kit

Dust filter for air intake when using fans (for RE4, RE4X, IDF only)

Delivery: 1 mounting bracket
 2 foam filters
 1 assembly hardware kit
 Catalog No. **REKFF**



Sound Dampening Kit

Use to dampen noise generated from active equipment in cabinet

Delivery: Dow quash foam pieces, pre-cut to line cabinet interior
 Catalog No. **REKS**



Gasket Kit

Enhances protection against dust and water, and performance of fan kit

Delivery: 1 10' roll adhesive-backed gasket
 Catalog No. **REKG**

ORDER INFORMATION - ACCESSORIES to Configure Rear Wall of QuadCab™ and Unloaded REBOX® Wall Mount Cabinets

Plywood Back Board

Provides universal mounting for wall mounted brackets, blocks, splitters, hubs, and other devices. Precut and designed for easy installation into cabinet.

Delivery:

1 - Sheet ¾" APA Grade AC plywood coated with fire retardant white paint, 4 mounting brackets, 4 mounting screws



Height	Width	Rear panel spaces	Rear panel spaces (if top justified)	Catalog No.
20"	19"	4	3	REKBB20
30"	19"	5	4	REKBB30
40"	19"	7	-	REKBB40

Equipment Mounting Bracket

Provides 5U of 19" rack space for rack mount hubs and switches. Space occupied on rear wall dependent upon size of equipment.

Delivery: 2 brackets, 1 left hand, 1 right hand

Finish: Light gray powder coat

Catalog No. **REKZ**



110/66 Block Mounting Rails

Accepts 5 - 100-pair 110 blocks with legs or 5 - devices mounted on 89B brackets such as 66 blocks or 12 port panels. Occupies 2 rear panel spaces.

Delivery:

2 110/66 block mounting rails
20 #10-24 x 1/2" screws

Material: 18 ga. cold rolled steel

Finish: Light gray powder coat

Catalog No. **REK110**



REK19

Bottom-Hinged Patch Panel Mounting Bracket

Provides 4U of 19" rack space to mount patch panels. Hinges down to provide access to rear of panel for ease of termination. Occupies 1 rear panel space.

Delivery: 2 brackets, 1 left hand, 1 right hand

Finish: Light gray powder coat

Catalog No. **REK19**

15A Economy Power Kit

Occupies left or right side of 1 rear panel space.

Catalog No. **REKP**

Delivery:

1 Hubbell surge-protected duplex receptacle with audible alarm (HBL5262IS)
1 single-gang work box
6' Hubbell Polytuff® flexible non-metallic conduit
1 Stainless steel face plate
1 Assembly hardware kit



REKP

Fiber Optic Bracket

Accepts one fiber FSP adapter panel. Occupies no rear panel spaces.

Delivery: 1 fiber optic bracket

Finish: Light gray powder coat

Catalog No. **REKFP**



ORDER INFORMATION - ACCESSORIES for REBOX® and QuadCab™ Wall Mount Cabinets

Filler Panel 2U

Use as shelf in REBOX®.

Delivery: 1 filler panel 2U, 1 kit mounting hardware

Catalog No. **MCCBP350**



Thermostat

Adhesive mounting bracket can be located along cabinet interior as appropriate.

Delivery: 1 thermostat, 1 adhesive-backed mounting bracket, 1 wiring harness

Catalog No. **CTK**



Lock Kit

Use to change key type to meet your application for both QuadCab and REBOX®.

Delivery: 1 Assembly lock and key

	Catalog No.
Standard kit to replace existing locks	CKL751
Change key from CH751 to 333	CKL333
To convert to Bellcore 716 lock	CKL716
To convert to European lock	CKLE



Padlock Hasp Kit

Allows user to secure cabinet with padlock

Delivery:

2 padlock hasp sets
1 kit assembly hardware

Catalog No. **REKH**

MT10 Adapter

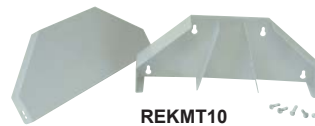
Mates MT10 large capacity, 3-channel, non-metallic surface raceway (see page D14) to top of REBOX® and IDF cabinets to deliver both electrical and communication cables

Delivery:

1 base, 16 ga. cold rolled steel
1 cover, 16 ga. cold rolled steel
1 cover hardware kit

Finish: Light gray powder coat

Catalog No. **REKMT10**



REKMT10

Wall Mount Cabinet Ground Kit

Use to ground cabinet components to common ground. Can be used in conjunction with the MCCGBAR and HPW-CGPK10.

Delivery: 1 Grounding bar, 1 Ground strap w/ring terminals, 1 Ground strap w/ring Terminal + Female Faston

Catalog No. **REKGB**

