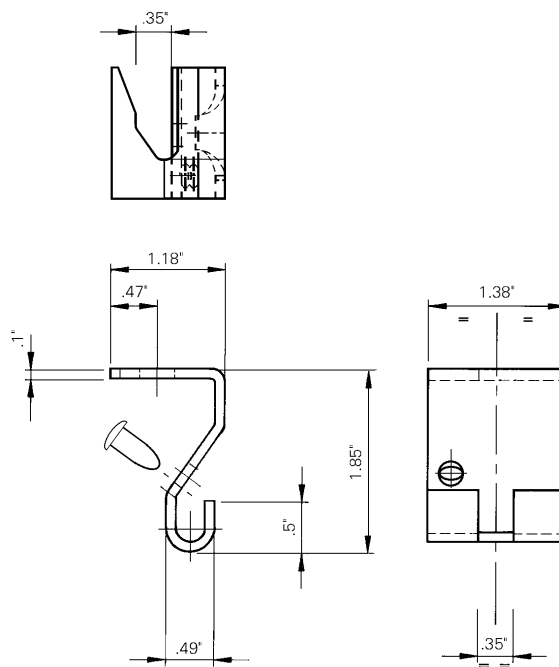
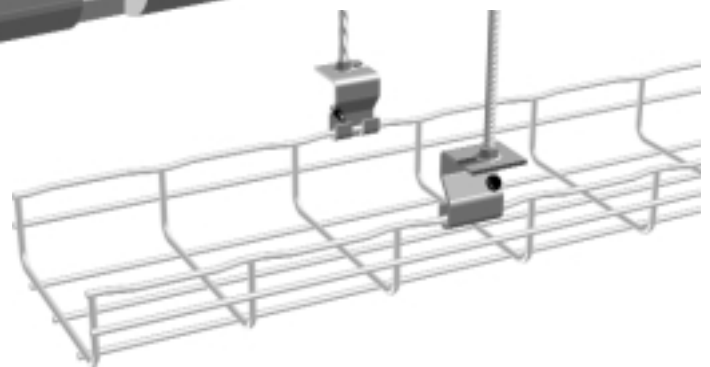
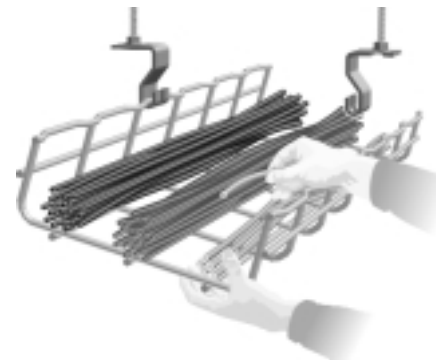
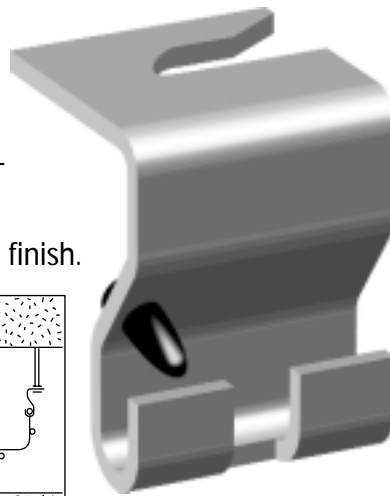
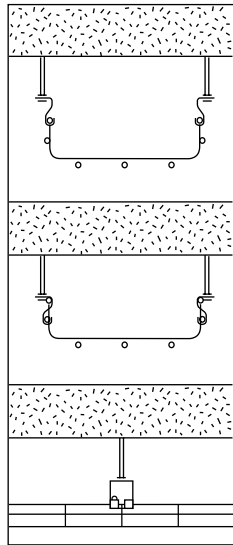


# AS – Trapeze Hanging Clip

**EZTray™**

- For trapeze hung installations.
- Use 1/4" or 3/8" threaded rod.
- Poly grommet retains tray in slot – unsnaps for side loading cables.
- Corrosion resistant pre-galvanized finish.
- Tray can be detached on one side only to add cables. (see illustration)



Part #	Description	lb.	Pk. qty.	Safety load
AS B	Trapeze Hanging Clips	5.5	50	216

\*Note: Accepts either 1/4" or 3/8" threaded rod.

**CABLOFIL**  
INNOVATORS IN CABLE MANAGEMENT

tel 618-566-3230  
800-658-4641  
fax 618-566-3250  
www.cablofil.com