

SmartDome & Dome Camera Accessory

Comparison Chart by Model

SHG-120 (Indoor Housing)

Dimension (unit :mm)

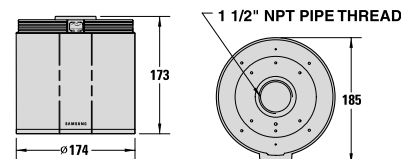


Summary

SHG-120 is applied to the installation of Smartdome camera on the wall and ceiling.

Features

- Aluminum Body



SHG-220 (Outdoor Housing)

Dimension (unit :mm)

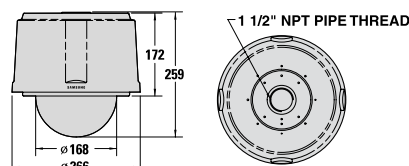


Summary

SHG-220 is applied to the installation of Smartdome camera outside the wall and ceiling. It was designed to tolerate harsh environment and earned IP 66 standards certification.

Features

- Built-in Fan & Heater
- Aluminum Body
- Clear Dome : high impact polycarbonate
- IP 66 Certification



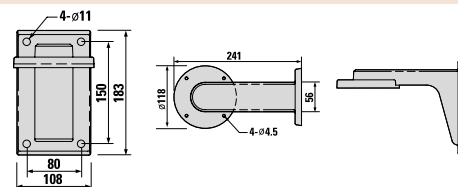
SADT-100WM/101WM/102WM (Wall Mount Adaptor)

Dimension (unit :mm)



Summary

SADT-100WM is applied when SHG-120 (Indoor housing) of SHG-220 (Outdoor housing) is installed on the outside/inside the wall. SADT-101WM/102WM are applied when SCC-931T/9302(F) (Anti-Vandal camera) are installed on the outside/inside the wall.



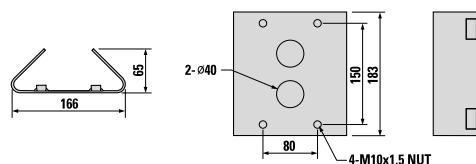
SADT-100PM (Pole Mount Adaptor)

Dimension (unit :mm)



Features

- Indoor or Outdoor Applications
- Supports up to 88 Pounds (40Kg)
- Metal body



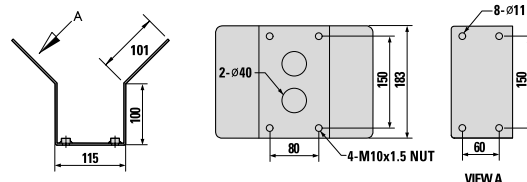
SADT-110CM (Corner Mount Adaptor)

Dimension (unit :mm)



Features

- Indoor or Outdoor Applications
- Supports up to 97 Pounds (44Kg)
- Metal body



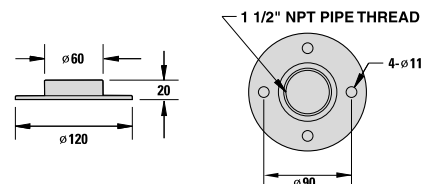
SADT-100CM (Ceiling Mount Adaptor)

Dimension (unit :mm)



Features

- Metal body
- Indoor or Outdoor Applications
- Supports up to 70 Pounds (32Kg)
- Rugged Construction



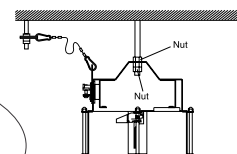
SBR-100DCM (Ceiling Mount Bracket)

Dimension (unit :mm)



Features

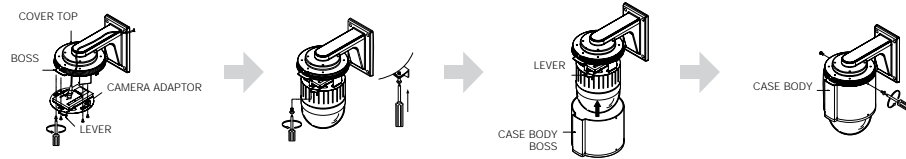
- Supports up to 35 Pounds (16Kg)
- Rugged Construction
- Metal body



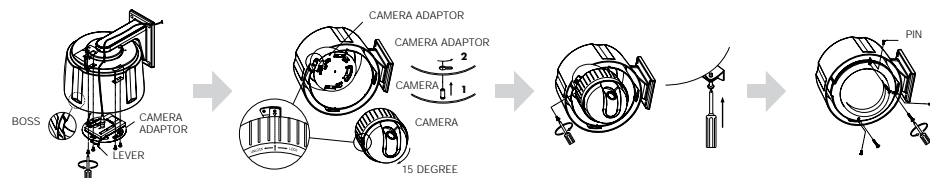
SmartDome & Dome Camera Accessory

Installation

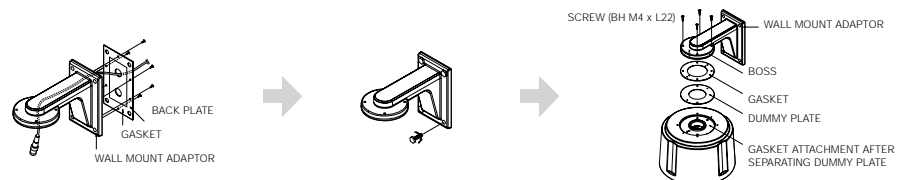
SHG-120



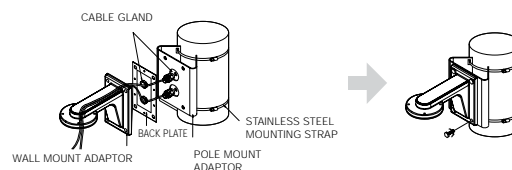
SHG-220



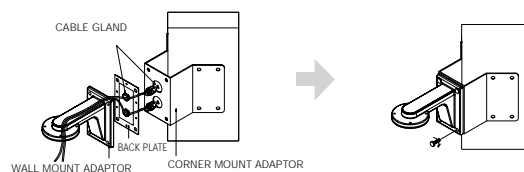
SADT-100WM/101WM



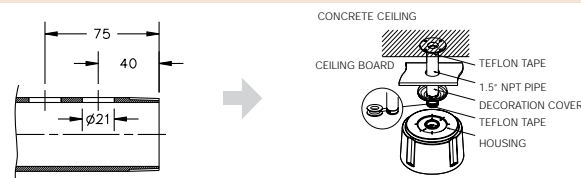
SADT-100PM



SADT-110CM



SADT-100CM



Sold by:



SBR-100DCM

